



Key Console Kit

RZ, RT, and SRT Series Mowers

Model No. 493-0151-00

Model No. 493-0152-00

Model No. 493-0153-00

Installation Instructions

These instructions are intended for replacing a console with another console that has the same part number. To replace a console with another console that has a different part number, contact Spartan Customer Care.

Preparing the Machine

1. Park the machine on a level surface, disengage the PTO switch, and engage the parking brake.
2. Shut off the engine and wait for all moving parts to stop before leaving the operating position.
3. Allow the machine to cool.
4. Record the number of hours shown on the hour meter.

IMPORTANT

The new hour meter does not account for the previous operating time; add the recorded number to the count on the new hour meter to calculate the accurate operating time.

5. Disconnect the negative (-) battery cable from the battery; refer to the *Operator's Manual* for the machine.

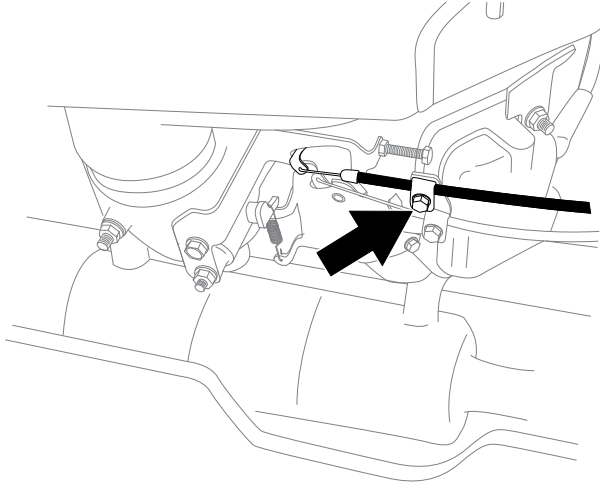


Removing the Existing Console

Retain all removed fasteners.

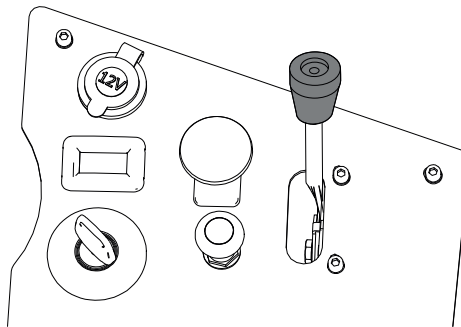
Note: Your control panel may have a different layout than shown.

1. If applicable, remove the choke cable from the engine as follows:
 - A. Loosen the bolt on the bracket securing the choke cable to the engine.



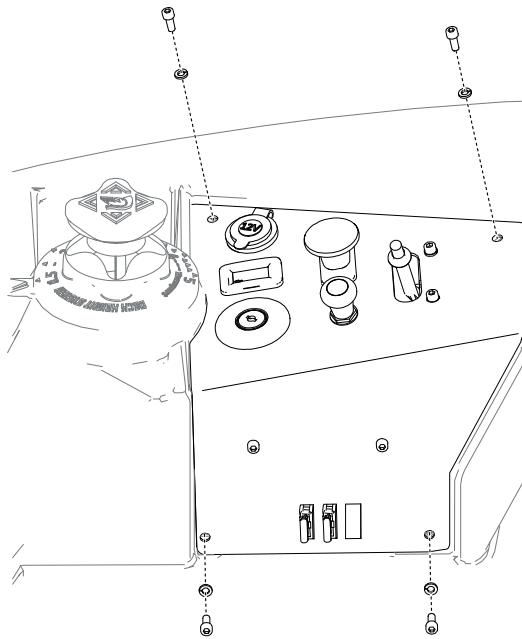
G496913

- B. Unhook the choke cable from the engine and pull it through the bracket.
 - C. Note the locations of the cable ties securing the choke cable to the machine.
 - D. Cut the cable ties.
 2. Remove the knob from the throttle control.



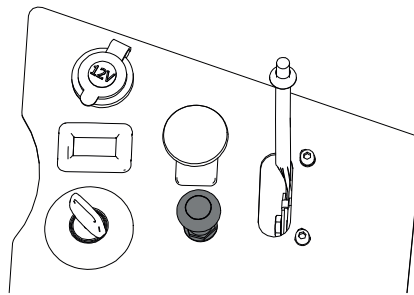
G496842

3. Remove the 4 screws and 4 lock washers from the control panel bracket.



G442695

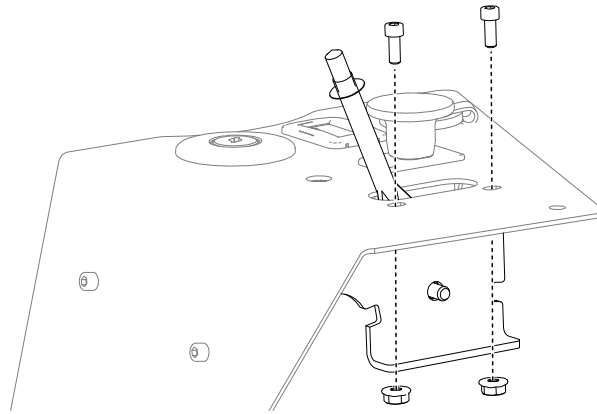
4. For machines with a choke control, remove the nut securing the choke cable to the control panel bracket and remove the choke control.



G496841

5. Disconnect the jumper harness from the hour meter, key switch, interlock module, and PTO switch.
6. Disconnect the 12 V adapter from the main wire harness.
7. Disconnect the jumper harness from the main wire harness.
8. Remove the fuse block assembly from the control panel bracket.

9. Remove the 2 screws and 2 nuts securing the throttle control to the control panel bracket.



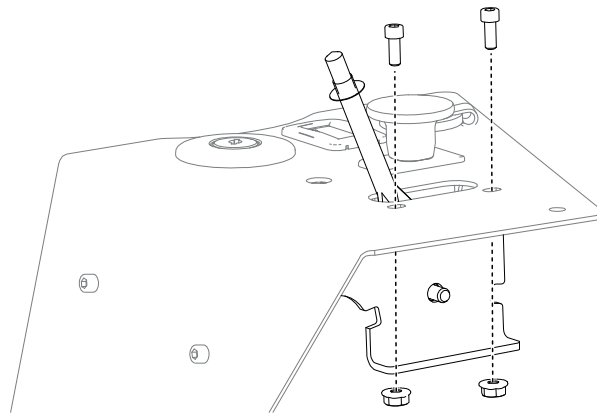
G442696

10. Remove the control panel bracket.

Installing the Kit Console

Note: Your control panel may have a different layout than shown.

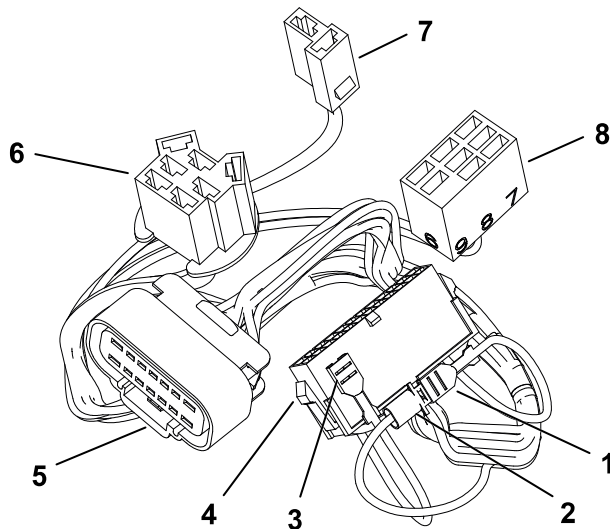
1. Secure the throttle control to the control panel bracket using the fasteners removed previously.



G442696

2. On the jumper harness, connect the spade connector appropriate for the engine of the machine (“EFI” or “CARB”) to the connector labeled “KILL SW”.

Note: Connection for a CARB engine is shown. If you use the wrong spade connector for the engine, the machine may not start or shut off correctly.



- ① CARB engine spade
- ② Kill switch
- ③ EFI engine spade
- ④ Main wire harness
- ⑤ Interlock module
- ⑥ Key switch
- ⑦ Hour meter
- ⑧ PTO switch

G499259

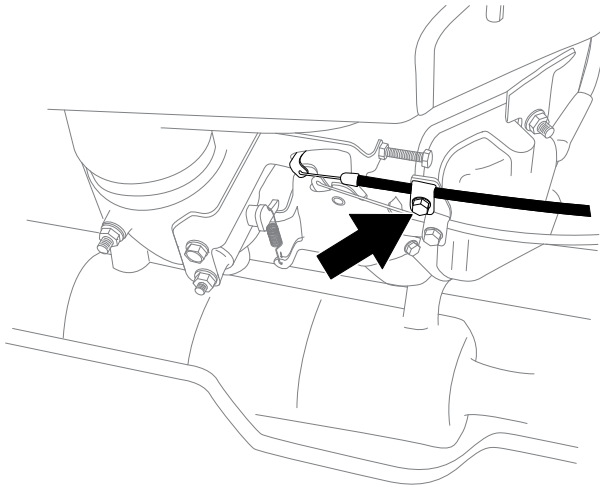
3. Connect the jumper harness to the main wire harness.
4. Connect the jumper harness to the hour meter, key switch, interlock module, and PTO switch.

5. Connect the main wire harness to the 12 V adapter.

IMPORTANT

Ensure to connect the blue wire to the positive terminal on the 12 V adapter and connect the black wire to the negative terminal.

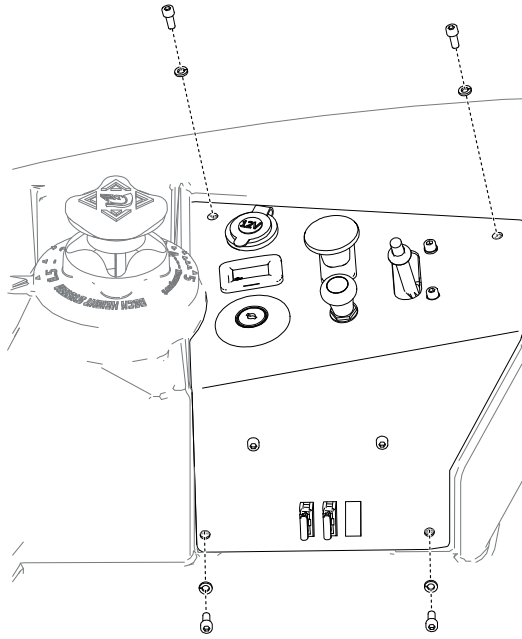
6. Secure the wires of the jumper harness with cable ties at the following locations to avoid pinching the wires when you install the control panel bracket:
 - Bundle of wires for the kill switch and main wire harness connector
 - Bundle of wires for the interlock module connector
 - Bundle of wires for the key switch, hour meter, and PTO switch connectors
7. Install the fuse block assembly into the control panel bracket.
8. If applicable, install the choke cable as follows:
 - A. Install the choke control to the control panel bracket.
 - B. Route the choke cable to the engine.
 - C. Route the cable through the front of the choke cable bracket. Hook the cable on the engine choke lever.



G496913

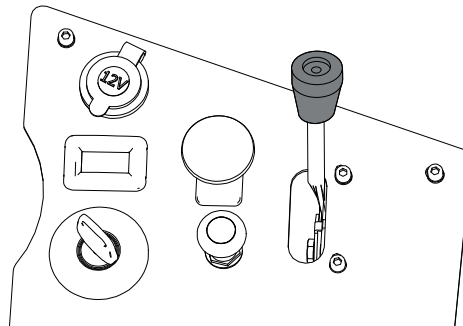
- D. Adjust the cable as needed per the engine manufacturer's instructions and tighten the bolt on the bracket.
- E. Use 2 cable ties to secure the cable to the machine, away from moving parts, at the locations noted previously.

9. Secure the control panel bracket to the machine using the fasteners removed previously.



G442695

10. Install the knob to the throttle control.



G496842

11. Connect the negative (-) battery cable to the battery.

