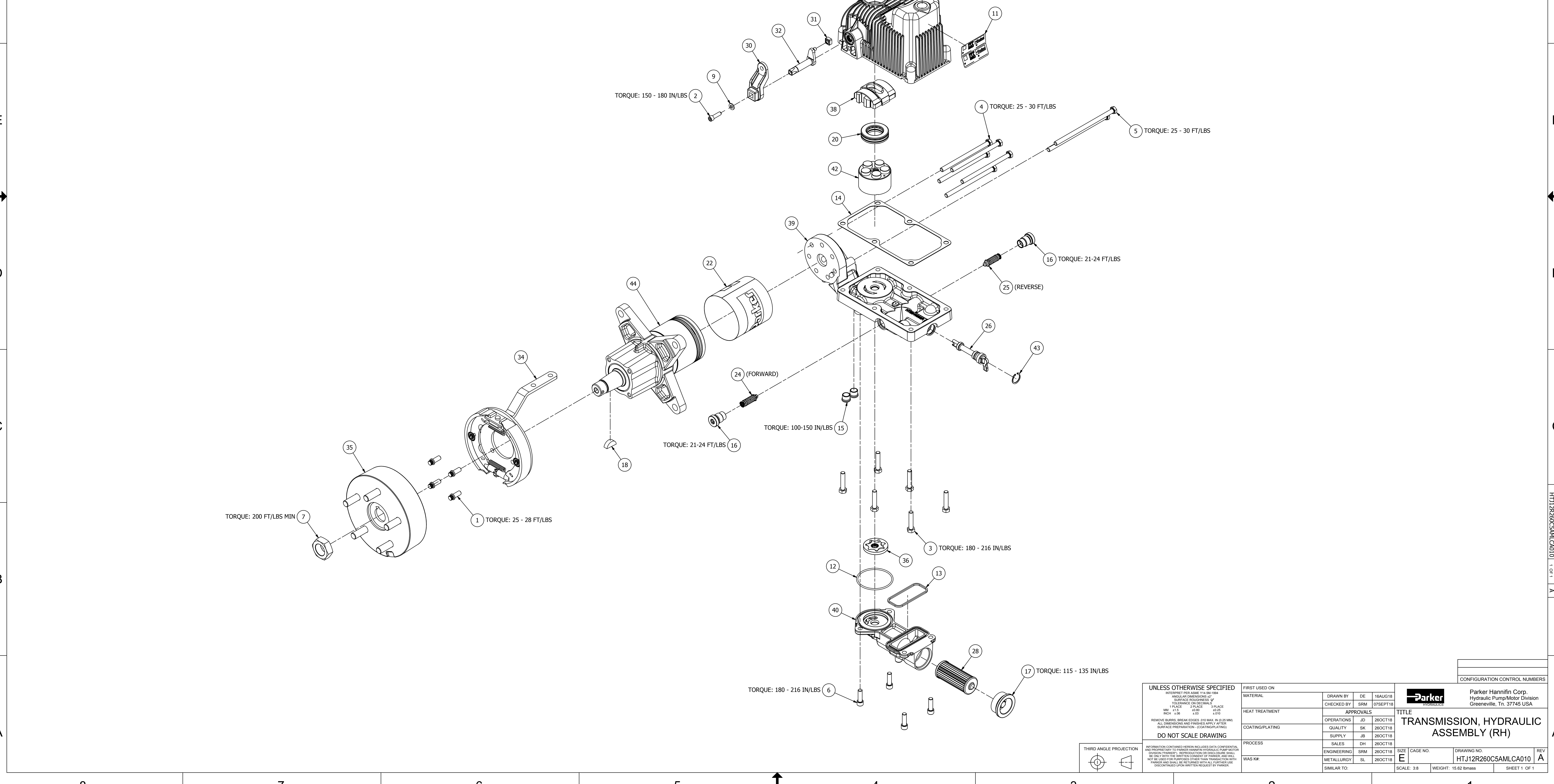


PARTS LIST			
ITEM	QTY	PART NUMBER	DESCRIPTION
1	4	020207	FLANGE HEAD CAP SCREW
2	1	020299	SOCKETHEAD CAP SCREW, 1/4-20
3	6	020301-008	SCREW, HEX HEAD (5/16-18 X 1.50)
4	5	021384	SPECIAL BOLT (5/16-24 UNF X 4 7/8" LG)
5	2	021448	SPECIAL BOLT (5/16-24 UNF X 6" LG)
6	4	021450	SCREW, SOCKET HEAD CAP (5/16-18 UNC X 1" LG)
7	1	025126	NUT, 1-20 UNEF-2B
8	1	025167	NUT, FLANGE 1/2-20 UNF
9	1	028022	WASHER, FLAT
10	1	028036	WASHER, FLAT
11	1	030055	IDENTIFICATION TAG (PARKER)
12	1	032202-144	PACKING, PREFORMED, O-RING SEAL
13	1	032865	SEAL, CHARGE PUMP COVER
14	1	034010	GASKET, TOP HOUSING
15	2	036023-006	PLUG, MAGNETIC HEX
16	2	036045	PLUG & O-RING ASSEMBLY
17	1	036325	PLUG & O-RING ASSEMBLY
18	1	038016	WOODRUFF KEY 5/16 X 1
19	.38 GAL.	045642	OIL, HYDRAULIC TRANSMISSION
20	1	066014	THRUST BEARING ASSEMBLY
21	1	401201	RETAINING RING (INTERNAL)
22	1	402202	MOTOR COVER (3.5")
23	1	403857	PULLEY (5 INCH)
24	1	410132	RELIEF VALVE SUB-ASSEMBLY
25	1	410133	RELIEF VALVE SUB-ASSEMBLY
26	1	410512	SA, BYPASS VALVE
27	1	411134	BREATHER
28	1	411154	FILTER
29	1	420004	FAN (7")
30	1	420107	BRACKET, ROTATING
31	1	452004	CONTROL BLOCK
32	1	452022	TRUNNION ARM (LONG)
33	1	478003	SHAFT SEAL
34	1	490164	BRAKE ASSEMBLY
35	1	490216	DRUM ASSEMBLY
36	1	H1014001	ROTOR SET ASSEMBLY
37	1	HTE012001RA1	SA, TOP HOUSING (RH)
38	1	HTE013000	SWASH BLOCK
39	1	HTE016001R-A1	SA, ENDBLOCK (RH)
40	1	HTE018000	COVER CHARGE PUMP MACHINED
41	1	HTE019004A1	SHAFT ASSEMBLY
42	1	HTE127001	PISTON & BARREL ASSEMBLY (12cc)
43	1	MS16627-2081	RETAINING RING
44	1	TJ0260SD081HTAB	SA, MOTOR

REVISIONS				
ZONE	REV	DESCRIPTION	DATE	APP
	-	ECR-0153863	25OCT18	SRM
	-	RELEASE FOR PRODUCTION		
	A	ECR-0158438	15NOV18	JSR
FB		PISTON & BARREL P/N WAS HTE127000		



UNLESS OTHERWISE SPECIFIED DIMENSIONS SHALL BE IN INCHES ANGULAR DIMENSIONS OF HOLES SHALL BE IN DEGREES TOLERANCES ON DECIMALS: MM .125 .005 .010 .015 INCH .005 .002 .003 .004		FIRST USED ON		Parker Hannifin Corp. Hydraulic Pump/Motor Division Greenville, TN 37745 USA	
MATERIAL	DRAWN BY: DE 16AUG18	CHECKED BY: SRM 07SEPT18	APPROVALS		
HEAT TREATMENT	OPERATIONS: JD 28OCT18	QUALITY: SK 28OCT18	TITLE: TRANSMISSION, HYDRAULIC ASSEMBLY (RH)		
COATING/PLATING	SUPPLY: JB 28OCT18	SALES: DH 28OCT18	SIZE: CAGE NO. DRAWING NO. REV		
PROCESS	ENGINEERING: SRM 28OCT18	METALLURGY: SL 28OCT18	HTJ12R260C5AMLC010 A		
WAS KR:	SIMILAR TO:	SCALE: 3/8	WEIGHT: 15.62 lbmass	SHEET: 1 OF 1	

DIVISION: HTJ12R260C5AMLC010 SHEET: 1 OF 1