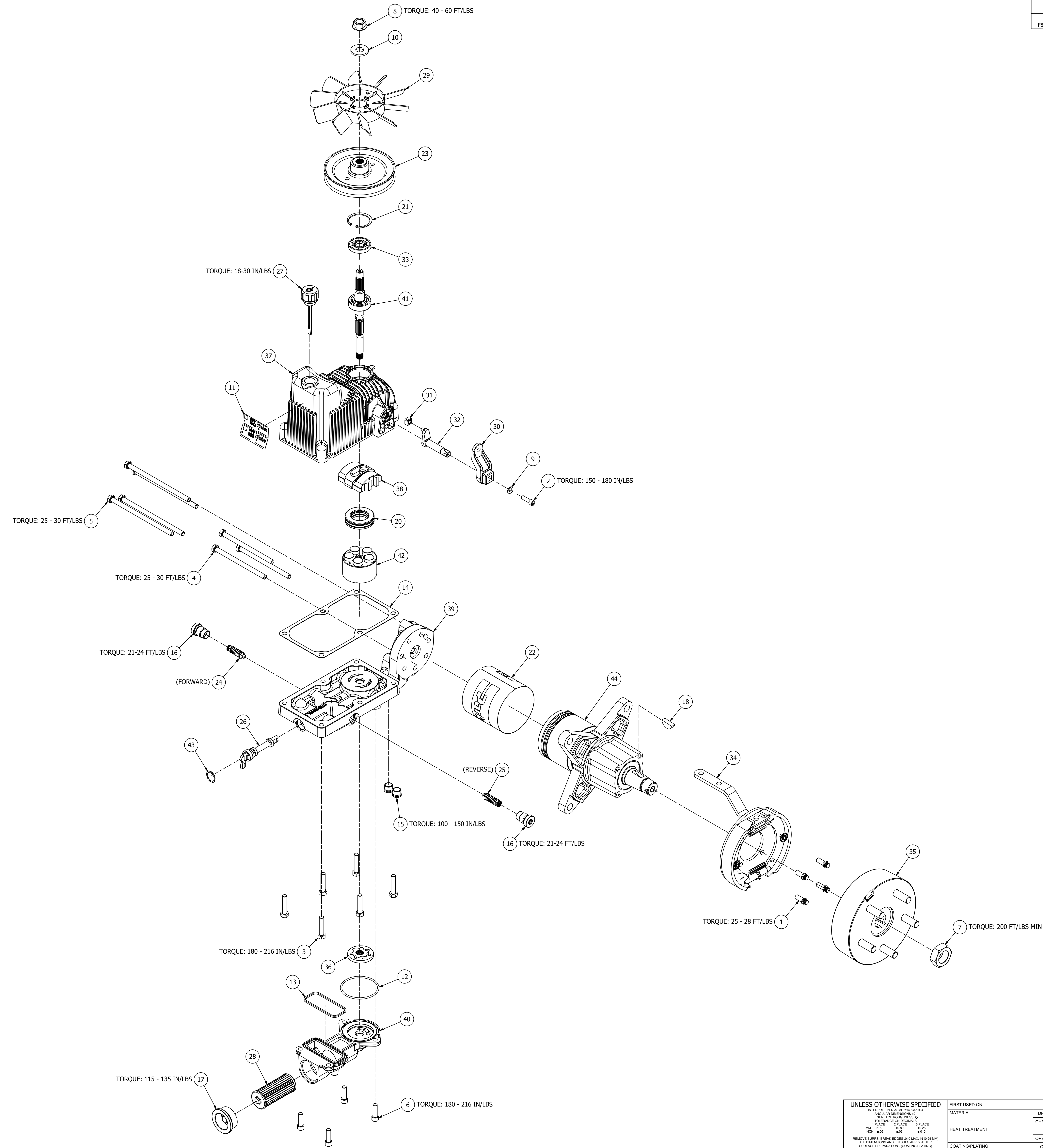


PARTS LIST			
ITEM	QTY	PART NUMBER	DESCRIPTION
1	4	020207	FLANGE HEAD CAP SCREW
2	1	020299	SOCKETHEAD CAP SCREW, 1/4-20
3	6	020301-008	SCREW, HEX HEAD (5/16-18 X 1.50)
4	3	021384	SPECIAL BOLT (5/16-24 UNF X 4 7/8" LG)
5	4	021448	SPECIAL BOLT (5/16-24 UNF X 6" LG)
6	4	021450	SCREW, SOCKET HEAD CAP (5/16-18 UNC X 1" LG)
7	1	025126	NUT, 1-20 UNEF-2B
8	1	025167	NUT, FLANGE 1/2-20 UNF
9	1	028022	WASHER, FLAT
10	1	028036	WASHER, FLAT
11	1	030055	IDENTIFICATION TAG (PARKER)
12	1	032202-144	PACKING, PREFORMED, O-RING SEAL
13	1	032865	SEAL, CHARGE PUMP COVER
14	1	034010	GASKET, TOP HOUSING
15	2	036023-006	PLUG, MAGNETIC HEX
16	2	036045	PLUG & O-RING ASSEMBLY
17	1	036325	PLUG & O-RING ASSEMBLY
18	1	038016	WOODRUFF KEY 5/16 X 1
19	.38 GAL.	045642	OIL, HYDRAULIC TRANSMISSION
20	1	066014	THRUST BEARING ASSEMBLY
21	1	401201	RETAINING RING (INTERNAL)
22	1	402202	MOTOR COVER (3.5")
23	1	403857	PULLEY (5 INCH)
24	1	410132	RELIEF VALVE SUB-ASSEMBLY
25	1	410133	RELIEF VALVE SUB-ASSEMBLY
26	1	410512	SA, BYPASS VALVE
27	1	411134	BREATHER
28	1	411154	FILTER
29	1	420004	FAN (7")
30	1	420107	BRACKET, ROTATING
31	1	452004	CONTROL BLOCK
32	1	452022	TRUNNION ARM (LONG)
33	1	478003	SHAFT SEAL
34	1	490164	BRAKE ASSEMBLY
35	1	490216	DRUM ASSEMBLY
36	1	H1014001	ROTOR SET ASSEMBLY
37	1	HTE012001LA1	SA, TOP HOUSING (LH)
38	1	HTE013000	SWASH BLOCK
39	1	HTE016001LA1	SA, ENDBLOCK (LH)
40	1	HTE018000	COVER CHARGE PUMP MACHINED
41	1	HTE019004A1	SHAFT ASSEMBLY
42	1	HTE127001	PISTON & BARREL ASSEMBLY (12cc)
43	1	MS16627-2081	RETAINING RING
44	1	TJ0260SD080HTAB	SA, MOTOR

REVISIONS				
ZONE	REV	DESCRIPTION	DATE	APP
	-	ECR-0153863	25OCT18	SRM
	A	RELEASE FOR PRODUCTION		
		ECR-0158438	15NOV18	JSR
FB	A	PISTON & BARREL P/N WAS HTE127000		

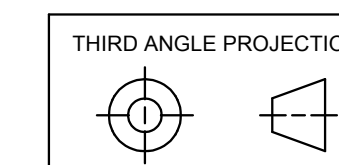


UNLESS OTHERWISE SPECIFIED		FIRST USED ON	
INFORMED FROM ABBE 134 861 704		MATERIAL	
ANGULAR DIMENSIONS OF		CHECKED BY	DE 16AUG18
YESTER DIMENSIONS OF		SRM 07SEPT18	
TOLERANCE ON DECIMALS		OPERATIONS	JD 28OCT18
MM .125 .005 .010		QUALITY	SK 28OCT18
INCH .005 .002 .002		SUPPLY	JB 28OCT18
		SALES	DH 28OCT18
		ENGINEERING	SRM 28OCT18
		METALLURGY	SL 28OCT18
		SIMILAR TO:	

APPROVALS			
DATE	BY	FUNCTION	INITIALS
28OCT18	JD	OPERATIONS	
28OCT18	SK	QUALITY	
28OCT18	JB	SUPPLY	
28OCT18	DH	SALES	
28OCT18	SRM	ENGINEERING	
28OCT18	SL	METALLURGY	

TITLE			
TRANSMISSION, HYDRAULIC ASSEMBLY (LH)			
SCALE: 3:8	WEIGHT: 15.72 lbmass	CAGE NO.	DRAWING NO.
		E	HTJ12L260C5AMLCA010

CONFIGURATION CONTROL NUMBERS			
REV	DATE	BY	DESCRIPTION
A			



THIRD ANGLE PROJECTION

DRAWING NO. HTJ12L260C5AMLCA010 1 OF 1

SHEET 1 OF 1

REV A