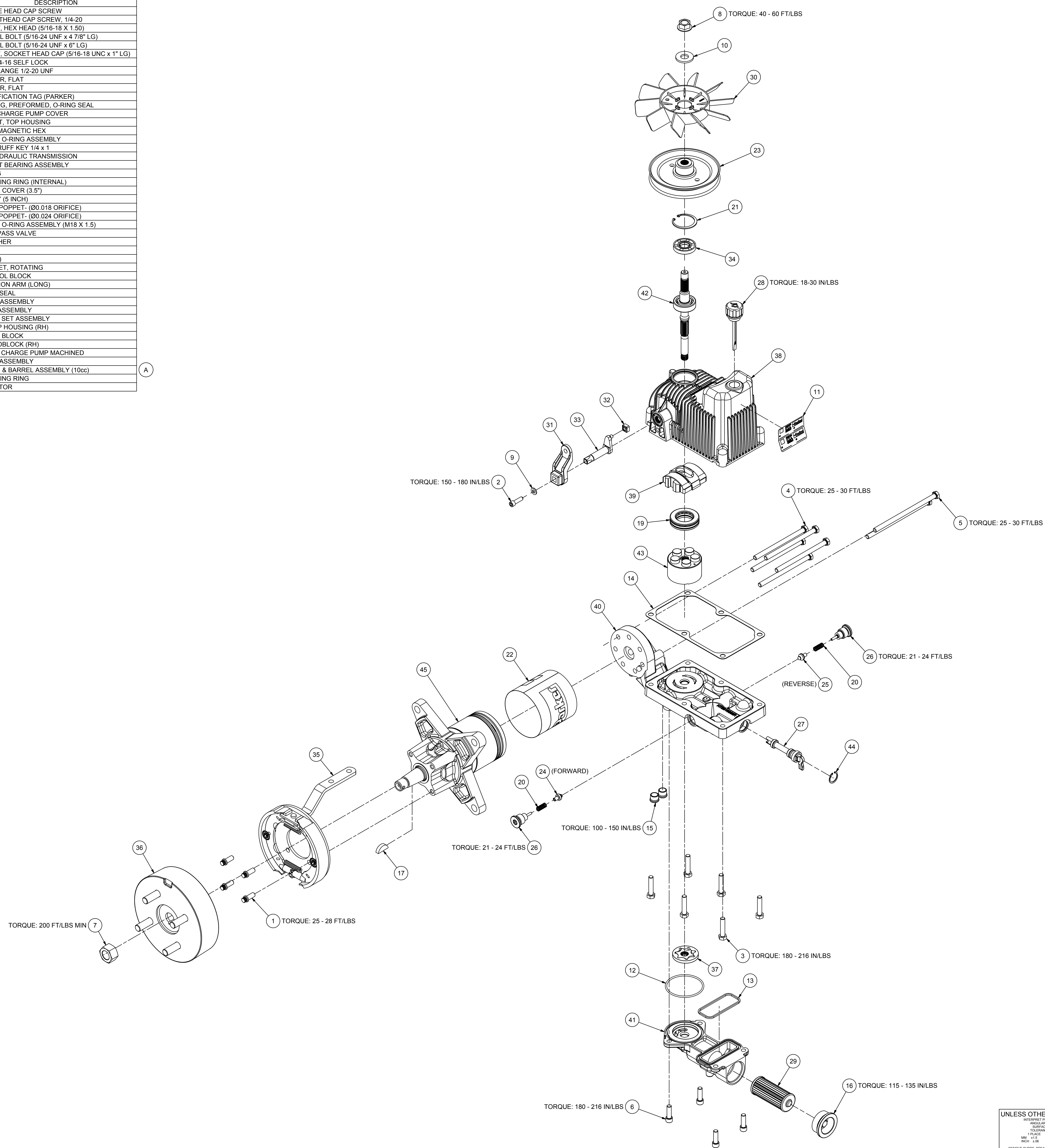


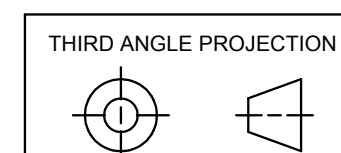
PARTS LIST			
ITEM	QTY	PART NUMBER	DESCRIPTION
1	4	020207	FLANGE HEAD CAP SCREW
2	1	020299	SOCKET HEAD CAP SCREW, 1/4-20
3	6	020301-008	SCREW, HEX HEAD (5/16-18 X 1.50)
4	5	021384	SPECIAL BOLT (5/16-24 UNF x 4 7/8" LG)
5	2	021448	SPECIAL BOLT (5/16-24 UNF x 6" LG)
6	4	021450	SCREW, SOCKET HEAD CAP (5/16-18 UNC x 1" LG)
7	1	025136	NUT, 3/4-16 SELF LOCK
8	1	025167	NUT, FLANGE 1/2-20 UNF
9	1	028022	WASHER, FLAT
10	1	028036	WASHER, FLAT
11	1	030055	IDENTIFICATION TAG (PARKER)
12	1	032202-144	PACKING, PREFORMED, O-RING SEAL
13	1	032865	SEAL, CHARGE PUMP COVER
14	1	034010	GASKET, TOP HOUSING
15	2	038023-006	PLUG, MAGNETIC HEX
16	1	036325	PLUG & O-RING ASSEMBLY
17	1	038015	WOODRUFF KEY 1/4 x 1
18	.38 GAL.	045642	OIL, HYDRAULIC TRANSMISSION
19	1	066014	THRUST BEARING ASSEMBLY
20	2	401143	SPRING
21	1	401201	RETAINING RING (INTERNAL)
22	1	402202	MOTOR COVER (3.5")
23	1	403857	PULLEY (6 INCH)
24	1	409059	VALVE POPPET - (Ø0.018 ORIFICE)
25	1	409060	VALVE POPPET - (Ø0.024 ORIFICE)
26	2	409365A1	PLUG & O-RING ASSEMBLY (M18 X 1.5)
27	1	410512	SA, BYPASS VALVE
28	1	411134	BREATHER
29	1	411154	FILTER
30	1	420004	FAN (7")
31	1	420107	BRACKET, ROTATING
32	1	452004	CONTROL BLOCK
33	1	452022	TRUNNION ARM (LONG)
34	1	478003	SHAFT SEAL
35	1	490164	BRAKE ASSEMBLY
36	1	490214	DRUM ASSEMBLY
37	1	H1014001	ROTOR SET ASSEMBLY
38	1	HTE012001RA1	SA, TOP HOUSING (RH)
39	1	HTE013000	SWASH BLOCK
40	1	HTE016001R-A1	SA, ENDBLOCK (RH)
41	1	HTE018000	COVER CHARGE PUMP MACHINED
42	1	HTE019004A1	SHAFT ASSEMBLY
43	1	HTE107001	PISTON & BARREL ASSEMBLY (10cc)
44	1	MS16827-2081	RETAINING RING
45	1	TE0260SD251HTAB	SA, MOTOR

REVISIONS				
ZONE	REV	DESCRIPTION	DATE	APP
	-	ECR-0153863	25OCT18	SRM
	A	RELEASE FOR PRODUCTION		
FB	A	ECR-0158428	15NOV18	JSR
		PISTON & BARREL P/N WAS H1107000		



UNLESS OTHERWISE SPECIFIED		FIRST USED ON	
INFERRED FROM ASME Y14.9M-1994	ANGULAR DIMENSIONS BY	MATERIAL	DRAWN BY DE 17AUG18
TOLERANCE ON DECIMALS BY	VEEDER-RODOLPHS OF	CHECKED BY SRM 07SEPT18	
MM .125 .005 .010 .015	PLACE	HEAT TREATMENT	APPROVALS
INCH .005 .002 .003 .005		OPERATIONS JD 26OCT18	
		QUALITY SK 26OCT18	
		SUPPLY JB 26OCT18	
		SALES DH 26OCT18	
		ENGINEERING SRM 26OCT18	
		METALLURGY SL 26OCT18	
		SIMILAR TO:	

Parker Hannifin Corp. Hydraulic Pump/Motor Division Greenville, TN 37745 USA	
TITLE TRANSMISSION, HYDRAULIC ASSEMBLY (RH)	
SCALE: 3:8	WEIGHT: 13.75 lbmass
DRAWING NO. HTE10R260C4AHGCA010	REV A
CAGE NO.	SHEET 1 OF 1



DRAWING NO. HTE10R260C4AHGCA010

SHEET 1 OF 1

REV A

CONFIGURATION CONTROL NUMBERS