

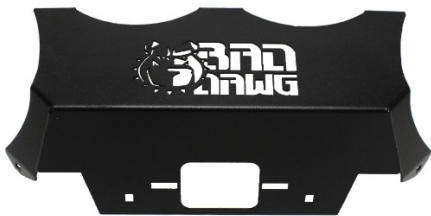
Package includes:



Bumper Top Rail



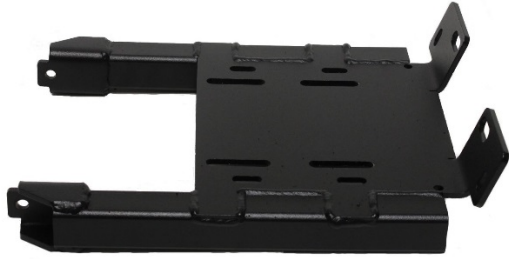
Left and Right Side Rails



Bumper Face



Bumper Skid Plate



Winch Plate



Bottom Bracket



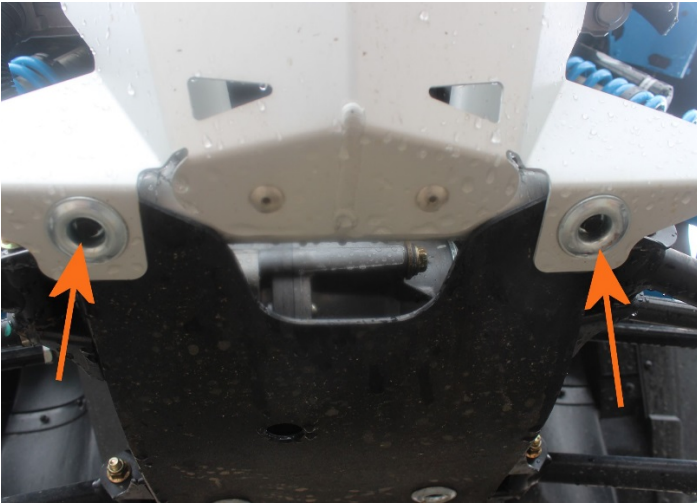
Pre-Packaged Bolt Kit



Factory bolts (from the factory bumper)

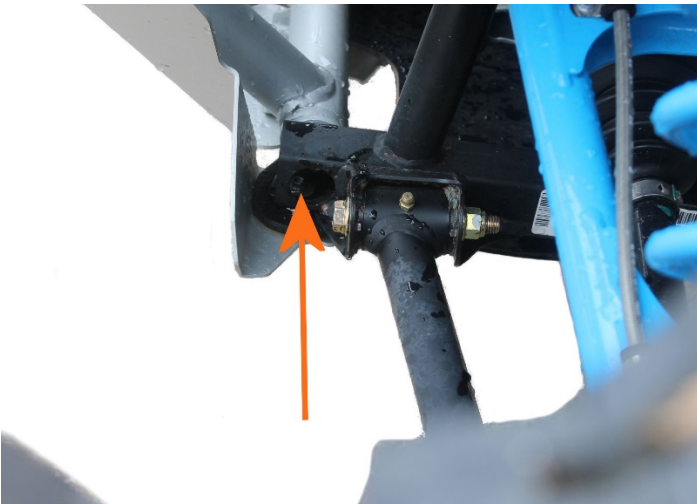
It is recommended that bolts remain "hand tight" until all bolts are installed.

STEP 1



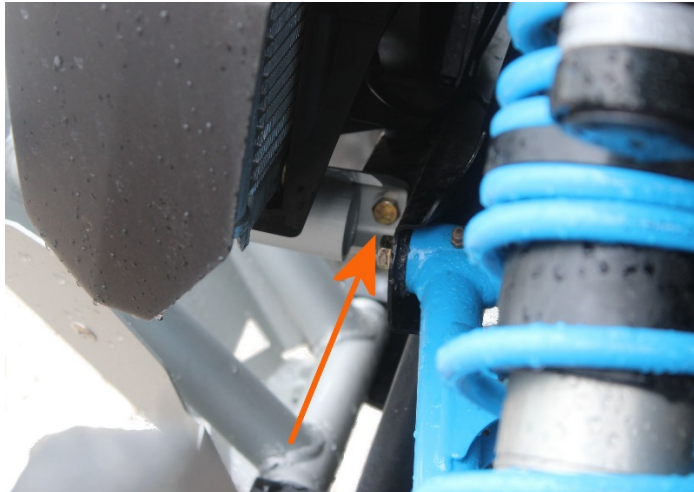
- Remove the Factory Bumper by first removing the two bolts with spacers shown here.
- Retain these bolts for further use.

STEP 2



- Remove and retain the longer bolt from the bottom of the bumper.

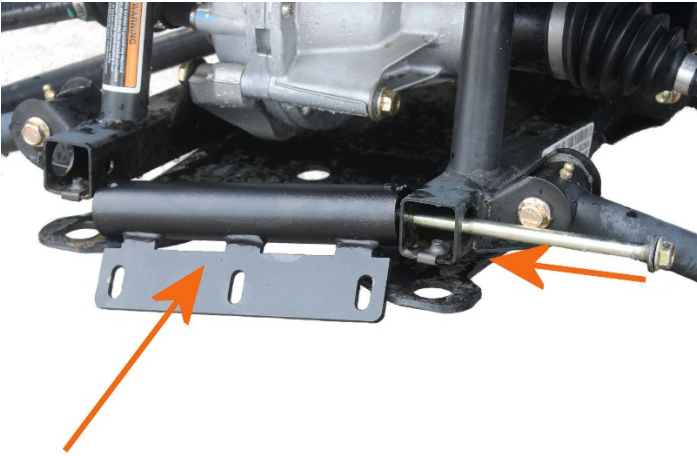
STEP 3



- Remove and retain the remaining upper bolts, from both sides of the bumper.

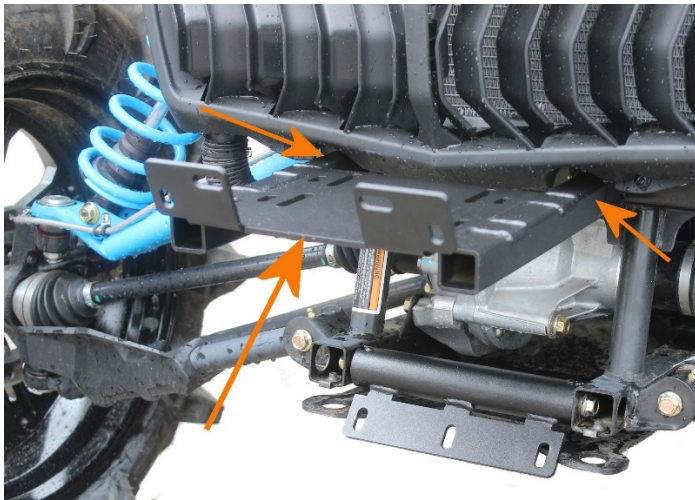
It is recommended that bolts remain "hand tight" until all bolts are installed.

STEP 4



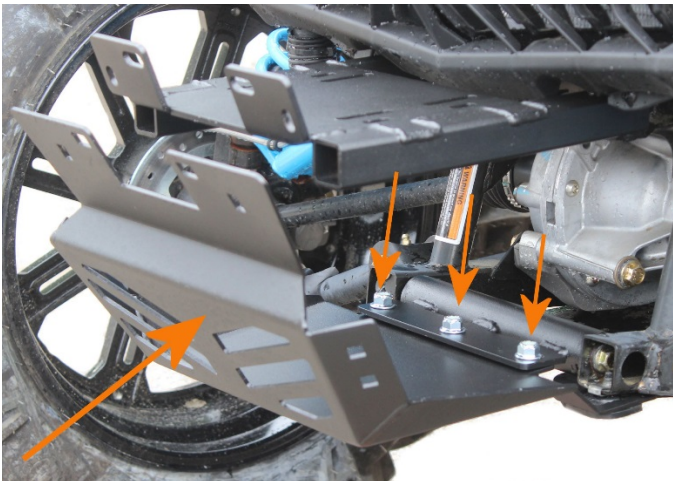
- Install the Bottom Bracket using the longer factory bolt as shown here.

STEP 5



- Using the two upper factory bolts, install the Winch Plate.

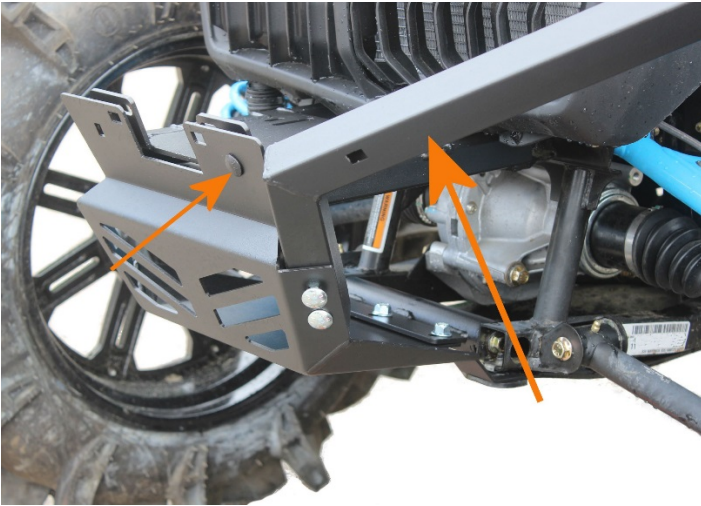
STEP 6



- Install the Bumper Skid Plate using the 3/8 x 1" Hex head bolts and Nylock nuts.

It is recommended that bolts remain "hand tight" until all bolts are installed.

STEP 7



- Install the Left and Right Side Rails using the provided 3/8 x 2 1/2" carriage bolts with Nylock nuts.
- Place the upper mounting tab between the Skid Plate and the Winch Plate.
- Repeat for the other side.

STEP 8



- Install the Bumper Top Rail as shown using the 3/8 x 1" carriage bolts with Nylock nuts.
- Leave loose to help in lining up the Bumper Face in the next step.

STEP 9



- Install the Bumper Face by aligning all the corresponding holes indicated here.
- Secure it using the appropriate bolts.

STEP 10



- Once all of the bolts are in place, start at the bottom and work your way up tightening all the bolts on the way up.
- Make adjustments to square it up as you move up. It may be necessary to back track a little to adjust .