



UTV/SIDE-BY-SIDE ACCESSORIES

WINCH INSTALLATION

I N S T R U C T I O N S

*For Intimidator Electric UTVs with New Style Converters - #793-1086-00
(Electric UTV Kit)*

INTIMIDATOR UTV WINCH - KIT PARTS



Figure 1: Kit Contents

Assembly Components:

Ensure that you have all of these components before beginning the installation.

- 1 x Winch
- 1 x Nylon Rope
- 1 x Winch Hook
- 1 x Fairlead
- 1 x Electronic Control Module
- 1 x Winch Control Switch
- 4 x Electric Connector Cables
- 1 x Circuit Breaker Box
- 1 x Switch Harness
- 1 x External Control Assembly
- 1 x Circuit Breaker Cable
- 1 x Hardware kit
- 1 x Instructions Packet (includes circuit breaker)
- *1 x Battery Assembly
- *1 x Electric UTV Harness

** Only included with the kit specific to electric UTV's*

There are several electronic components necessary for proper installation that are not included in the winch kit, but may be found at any hardware store. They include:

- 3 x Female Spade Connectors
- 2 x Self-tapping 1" Screws
- 1 x Piggy-back Wire Connector
- Additional Zip Ties as Necessary

Safety:

Ensure that the UTV is safely parked on level ground with the ignition off. Wear all appropriate PPE for the following procedures.

Note:

Leave all hardware loose until the entire assembly is in its final position.

Included in these instructions are steps that only apply to electric UTV's. Those steps are indicated by an (E) at the beginning of the step description.

Step 1

Attach the yellow and blue cables to the winch at the color matched connection points. Be sure that the eyelets of the cables are firmly sandwiched between the copper washers (Figure 2).



Figure 2: Electric Cables to Winch

Step 2

Place the winch onto the machine's winch mounting plate with the yellow end cap on the driver's side and the cables on the passenger side (Figure 3).



Figure 3: Winch Mounting Location

Step 3

Secure the winch to the mounting plate utilizing the hardware from the hardware kit. Place a lock-washer onto each bolt, followed by a flat washer before threading it through the bottom of the winch plate and into the base of the winch (Figures 4 & 5).



Figure 4: Mounting Hardware



Figure 5: Underside of Winch Plate

Step 4 (E)

Locate the auxiliary battery mounting location on the UTV and mount the battery kit with the included carriage bolts and nuts (Figures 6 & 7).

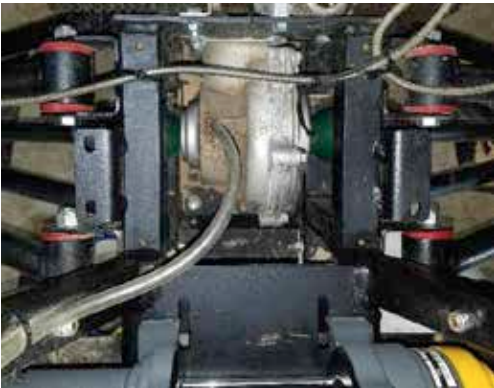


Figure 6: Intimidator Battery Mounting Location



Figure 7: Battery Mounting Hardware

Step 5

Mount the winch control box to a section of the UTV frame with the electronic contacts easily accessible (Figure 8).



Figure 8: Controller Location

Step 6

Connect the yellow and blue cables from the winch to the corresponding contacts on the controller. For cleaner installation, pre-measure and cut the wires before installing new eyelet connectors. Or, simply loop the cables and secure them with a zip tie away from moving parts (Figure 9).



Figure 9: Electric Cables to Controller

Step 7

Assemble the circuit breaker kit with the positively indicated terminal connected to the short red cable. Enclose the circuit breaker inside of the black box labeled “circuit breaker” (Figures 10, 11, & 12).



Figure 10: Battery Cable Kit w/ Circuit Breaker



Figure 11: Positive Sticker to the Left Short Section



Figure 12: Cover Installed

Step 8

Connect the newly assembled red circuit breaker cable and the included black cable to the battery with their corresponding colors. Then attach the other ends of the cables the corresponding locations on the winch controller module (Figure 13).



Figure 13: Battery Cables to Controller

Step 9

The UTV is equipped with a DC/DC converter. To install the winch wiring harness, several wires must be accessible which will include removal of the glove box compartment (Figure 14).



Figure 14: View of DC/DC Converter Under Hood

Step 10

Remove the glove box compartment, or other structures to gain access to the DC/DC converter wire Deutsch connectors (Figure 15).

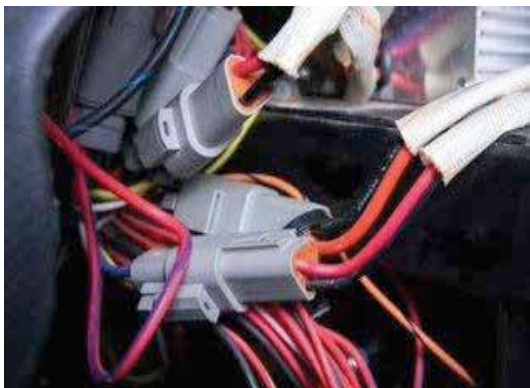


Figure 15: Connectors - View from Removed Glove Box

Step 11

Unplug the Deutsch connections on the converter from the UTV harness. Keep all connectors within reach.

Step 12

The winch wiring harness is equipped with Deutsch connectors that correspond with the connectors on the 60 AMP (largest) converter. Connect each connector with its corresponding plug. Triangle to triangle, square to square, male to female. (Figures 16 & 17).

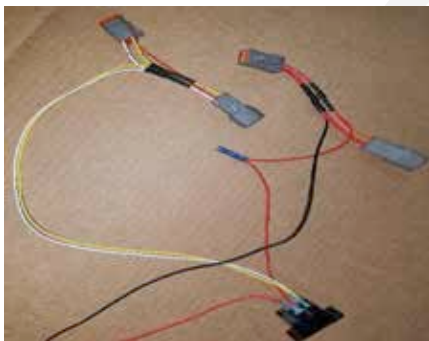


Figure 16: Winch Wiring Harness



Figure 17: Winch Wiring Harness Pinned Correctly

Wiring for 48v to 12v Converter

Frame Harness		New Style
Blue	48+	Red
Yellow	Ground	Black
White	Key On	Blue

***Note: Check winch wiring harness for correct pin locations. Relocate pins if necessary.**

Step 13

Route the red and black wires of the harness to the corresponding terminals on the battery (Figure 18).

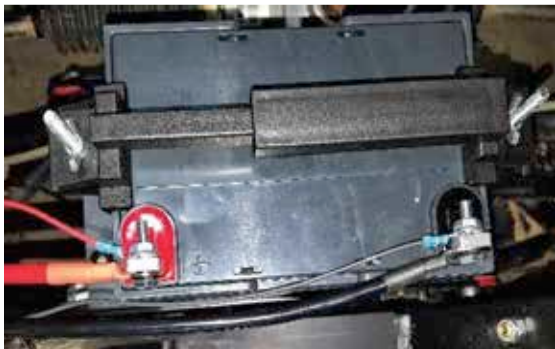


Figure 18: Battery Wiring

Step 14

Locate the winch control switch harness and the included dash switch. Replacing the switch is optional, but will allow the switch to be installed directly into the dash of the UTV (Figure 19).

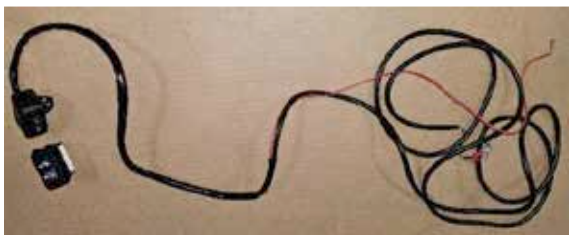


Figure 19: Switch Harness & Dash Switch

Step 15

Cut off the factory switch and strip the cable and wires in order to add female spade connectors (Figure 20).

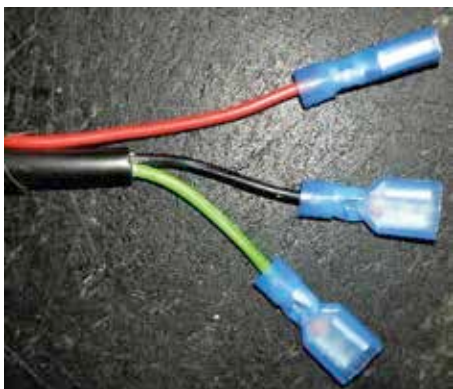


Figure 20: Female Spade Connectors

Step 16

Add a piggy-back connector to the lone red wire (Figure 21).



Figure 21: Piggy Back Connector on Red Wire

Step 17

Route wires with the spade connectors through an open spot in the dash and attach to the new switch at the correct terminals before pressing the switch into the dash (Figures 22 & 23).



Figure 22: Connected Switch



Figure 23: Installed Switch

Step 18

Connect the green and black connectors at the opposite end of the switch cable to the top of the winch controller (Figure 24).

Figure 6 of the winch installation manual details the wiring in a schematic for reference.



Figure 24: Switch to Controller Wiring

Step 19 (E)

Connect the red wire to the open connector on the winch wiring harness. No connector is needed (Figure 25).



Figure 25: Electric UTV Red Wire

Step 20

Connect the red wire with the piggy-back connector to the 12V accessory port.

Step 21

Install the fairlead on the front of the UTV. Any sharp edges that extend inside of the fairlead must be removed before the rope is installed (Figure 26).



Figure 26: Fairlead Mounting

Step 22

Install the synthetic rope by first inserting the taped end into the receiving hole in the spool and tightening the Allen screw to secure the rope inside of the spool (Figure 27).



Figure 27: Rope Inserted into Spool Hole

Step 23

Have another person slowly wind the spool with the control switch while you guide the rope onto the spool evenly and without any twists in the rope (Figure 28).



Figure 28: Properly Spooled

Step 24

Once the rope is fully retracted, install the hook and pull strap (Figure 29).



Figure 29: Hook & Pull Strap Installed

Step 25

Make sure to secure all wires away from moving parts and to replace any panels, glove box compartments, etc. before operating the winch or the UTV.



EXTERIOR CONTROL SWITCH - OPTIONAL

Step 1

Locate the exterior control switch and the jack plug harness included with the kit (Figure 30).



Figure 30: External Winch Control Kit

Step 2

Install the jack plug at the desired location on the UTV. Mounting holes may need to be cut/drilled in order to fasten the jack to plastic body parts (Figure 31).



Figure 31: Example Mounting Location

Step 3

Route the jack harness to the winch control module and connect the black and green wires to their corresponding locations, shown in **Figure 24: Switch to Controller Wiring**. Connect the red wire to the 12V accessory charger in the dash. **(E)** Connect the red wire to the open connector on the winch wiring harness.



UTV/SIDE-BY-SIDE ACCESSORIES