



MOWER DECK LOCK

I N S T R U C T I O N S

For All RT & SRT Models

For more instructions visit SpartanMowers.com or contact your local dealer.

MOWER DECK LOCK - KIT PARTS



Figure 1
Arm Link, Hardware, & Height Selector Tube



STEP 1

Install 2x4 or 4x4 wooden blocks on each side of the deck and let the deck down to rest on the blocks.



STEP 2

Remove the right deck height arm link (435-0008-00) by removing the two ½" bolts and nuts holding it to the mower lifting assembly.



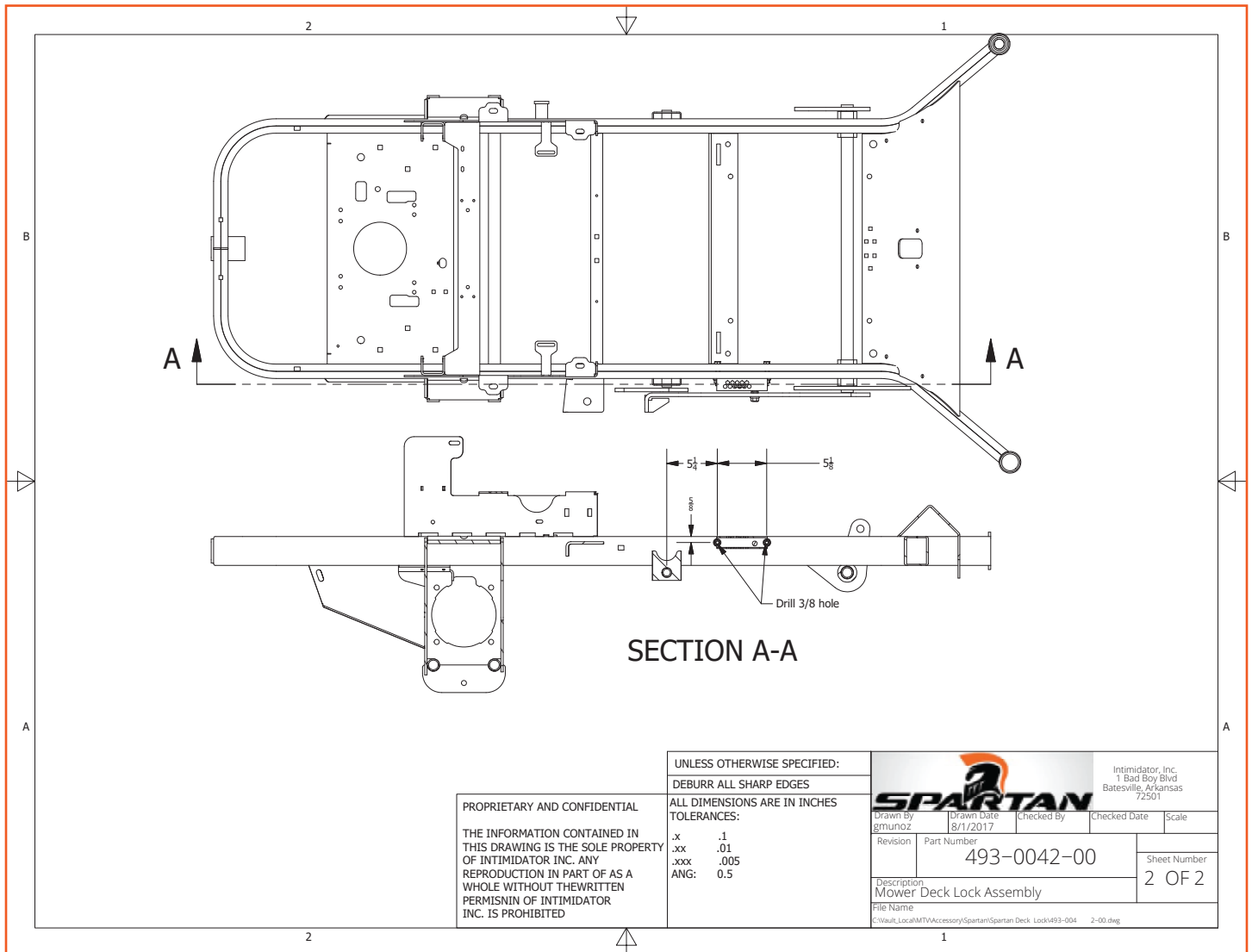
STEP 3

Remove the floor panel.



STEP 4

Using the supplied measurement diagram, measure from the appropriate location on the frame to the location of the two 3/8" holes that will need to be drilled. Mark the location with a fine tip marker. Masking tape may be used to help from damaging the paint.



STEP 5

After location has been marked and measured twice, use a small pin punch to create a dimple at the two locations that will be drilled. This helps the drill bit not to stray off mark.



STEP 6

Using a sharp 3/8" drill bit, drill through both sides of the frame at both marked locations. Make sure to keep the drill straight and not at an angle when drilling.



STEP 7

Using a 31/64" drill bit, drill the front, inside hole to make the 3/8" hole larger. Do not drill through both sides of the frame.



STEP 8

Installing the Height Selector Tube - Install the rear carriage bolt through the tube and into the frame. The front carriage bolt will need to be installed from the inside of the frame, out and through the tube. Using a hammer, carefully tap on the carriage bolt head to drive it into the frame.



STEP 9

Tighten the two 3/8" nylon lock nuts securely on the carriage bolts.



STEP 10

Remove the cam pin from the old arm link and install onto the new arm link. Install the Height Selector Pin onto the new arm link and tighten securely.



STEP 11

Install the new arm link to the mower lifting assembly using the two original 1/2" bolts and nuts. Tighten securely and then back both off 1/8 turn.

STEP 12

Reinstall the floor panel and sit in the operator's seat of the mower. Adjust the deck height higher so that the deck is no longer resting on the wooden blocks. At this point, look through the deck height selector tube and locate the horizontal cam pin. The remaining height selector tube pin from the hardware packet should be placed in the hole just behind the horizontal cam pin. This will ensure that the deck cannot fall beyond the limits of the pins.



HINT - Always follow selected deck lock height with the factory installed deck dial to prevent unnecessary strain on the deck lock kit. This is especially true when loading or transporting your mower.



