



INTIMIDATOR

**OWNER'S
MANUAL**

2500 EV
Electric Vehicle

WARNING

Read, understand, and follow all of the instructions and safety precautions in this manual and on all product labels.

Failure to follow the safety precautions could result in serious injury or death.

Congratulations on your purchase of an Intimidator utility terrain vehicle. Each of our vehicles is the result of years of innovative development and rigorous testing, and we are proud to share that passion with you.

For safe and enjoyable operation of your vehicle be sure to follow the instructions and recommendations in this owner's manual.

Inside you will also find instructions for minor maintenance, but it is recommended that major repairs are performed by properly certified technicians. Your Intimidator dealership can provide all of your service needs during and after the warranty period.



INTIMDATOR

Owner Memo

Name: _____

Purchasing Date: _____

Type: _____

Pin Number: _____

Special Notice: _____

Key Number: _____

Table of Contents:

Title	Page Number
Introduction	Page 4
Definitions	Page 4
Safety Labels	Page 4-8
ROPS and FOPS Inspection Guide	Page 9-10
General Safety	Page 11-14
Safe Riding Gear	Page 15
Features, Controls and Operation	Page 16-30
Service and Maintenance.....	Page 31-46
Storing and Maintaining Appearance.....	Page 47-48
Transporting your Intimidator	Page 48
Accessories	Page 48
Specifications	Page 49
Troubleshooting	Page 50-51
Warranties	Page 52-53
Service Record	Page 54-55
Registration	Page 56-57

INTRODUCTION

READ THIS OWNER'S MANUAL. The Intimidator is an off-road vehicle and is not a toy. The Intimidator is an adult vehicle only and can be hazardous to operate. Failure to follow the warnings and instructions in this manual can result in severe injury or death.

PRODUCT IDENTIFICATION NUMBER (PIN):

PIN is located between the seat back and cargo bed.

DEFINITIONS

DANGER:

A Danger indicates a hazardous situation that, if not avoided, may result in serious injury or death.

WARNING:

A Warning indicates a situation that, if not avoided, may result in property damage.

NOTICE:

A Notice indicates a situation that may result in property damage

SAFETY LABELS

For your protection, warning labels have been placed on the vehicle. Read and follow the instructions of the labels on the vehicle carefully. If any label becomes illegible or comes off, contact your authorized dealer to purchase a replacement.

⚠ WARNING

Improper Use of Off-Highway Vehicles Can Cause Severe Injury or Death

<p>Drive Responsibly</p> <p>Avoid loss of control and rollovers:</p> <ul style="list-style-type: none"> - Avoid abrupt maneuvers, sideways sliding, skidding, or fishtailing, and never do donuts. - Slow down before entering a turn. - Avoid hard acceleration when turning, even from a stop. - Plan for hills, rough terrain, ruts, and other changes in traction and terrain. Avoid paved surfaces. - Avoid side hilling (riding across slopes). 	<p>Require Proper Use of Your Vehicle</p> <p>- An UTV operator safety course, either through your dealer or online at www.rthva.org is highly recommended.</p> <p>Do your part to prevent injuries:</p> <ul style="list-style-type: none"> - Do not allow careless or reckless driving. - Make sure operators are 16 or older with a valid driver's license. - Do not let people drive or ride after using alcohol or drugs. - Do not allow operation on public roads (unless designated for off-highway vehicle access) - collisions with cars and trucks can occur. - Do not exceed seating capacity: <input type="checkbox"/> 2 <input type="checkbox"/> 3 <input type="checkbox"/> 5 <input type="checkbox"/> 6 occupants.
---	--



Read the Owner's Manual and Follow All Instructions and Warnings.



IUTV-1

Discretionary and Age Warning – Located on vehicle dash.

DANGER:

Improper use of off-highway vehicles can result in severe injury or death.

Drive Responsibly

Avoid loss of control and rollovers:

- Avoid abrupt maneuvers, sideways sliding, skidding or fishtailing, and never do donuts.
- Slow down before entering a turn.
- Avoid hard acceleration when turning, even from a stop.
- Plan for hills, rough terrain, ruts, and other changes in traction and terrain. Avoid paved surfaces.
- Avoid side-hilling (riding across slopes).

Require Proper Use of Your Vehicle:

Do your part to prevent Injuries:

- Do not allow careless or reckless driving.
- Make sure operators are age 16 or older with a valid drivers license.
- Do not let people drive or ride while under the influence of alcohol or drugs.
- Do not allow operation on public roads (unless designated for off-highway vehicle access) – collisions with cars and trucks can occur.
- Do not exceed seating load capacity.



Seat belt and Safety Warning – Located on vehicle firewall.

DANGER:

Operator and passengers must fasten seatbelt while the vehicle is in use.

Improper Use of Off-Highway Vehicles Can Cause Severe Injury or Death.

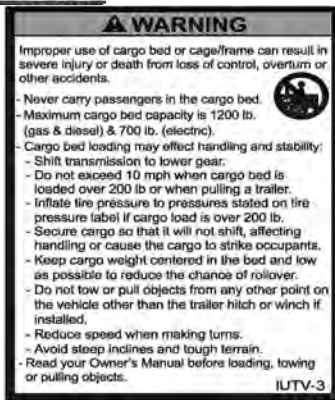
Be Prepared:

- Fasten seat belts.
- Wear an approved helmet and protective gear.
- Each rider must be able to sit with their back against seat, feet flat on floor (and foot rests), and have hands on steering wheel or handhold(s), where equipped. Stay completely inside the vehicle.

Be Sure Riders Pay Attention and Plan Ahead

If you think or feel the vehicle may tip or roll, reduce your risk of injury:

- Keep a firm grip on the steering wheel or hand-holds and brace yourself.
- Do not put any part of your body outside of the vehicle for any reason.



Cargo Bed Safety Warning– Located in the cargo bed. Improper use of cargo bed or cage/frame can result in severe injury or death from loss of control, overturn or other accidents.

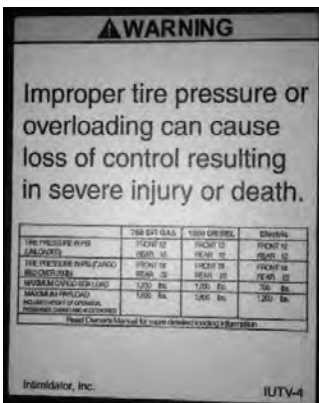
- Never carry passengers in the cargo bed.
- Maximum cargo bed capacity is 700 lb.
- Do not exceed 10mph when cargo bed is loaded over 200 lb.
- Inflate tire pressure to pressures stated on tire pressure label if cargo load is over 200 lb.
- Secure cargo so that it will not shift, affecting handling, or cause the cargo to strike occupants.
- Keep cargo weight centered in the bed and as low as possible to reduce the chance of rollover.
- Do not tow or pull objects from any other point on the vehicle other than the trailer hitch or winch if installed.
- Reduce speed when making turns.
- Avoid steel inclines and tough terrain.
- Read your owner's manual before loading, towing or pulling objects.



Tilt Cargo Bed Warning – Located near the handle on the driver's side of the cargo bed.

WARNING:

Keep hands, body, and other people away from pinch points when lowering bed. Do not hold the cage/frame while closing bed.



Tire Pressure Chart

TIRE PRESSURE AND SIZE CHART

Vehicle Position	Size	Load Rating (lb)	Air Pressure (psi)	Top Speed Rating (mph) @ Max Load	Max Payload
Front	26x9R14	750	18	10	Loaded
Rear	26x11R14	1275	22	10	
Front	26x9R14	680	12	25	Unloaded
Rear	26x11R14	1000	12	25	



ROHVA and ISO certification sticker – Located on the ROPS

Rollover Protective Structures (ROPS) Inspection Guide

Falling Object Protective Structures (FOPS) Inspection

ROPS and FOPS, like any other safety device, need to be periodically inspected to verify that the integrity of the device has not been compromised through normal machine use, misuse, age degradation, modifications, or roll-overs.

Some mechanical discretion is essential, therefore personnel who inspect ROPS and FOPS need to comprehend and understand the significance of issues like structural corrosion, cracks, and deformation. Conservatism is the essential rule – if in doubt, remove the machine from service and contact the ROPS/FOPS manufacturer for assistance. Certain conditions will absolutely render the ROPS/FOPS unusable. Examples are:

- Permanent deformation or twisting.
- Missing, damaged, or loose mounting hardware.
- Mounting hardware that is of a grade lesser than specified.
- Any cracks in the structure (structural members and/or welds).
- Significant corrosion.
- Modifications, i.e. unauthorized welds and holes.
- Missing or unreadable ROPS/FOPS label.
- Applicable ROPS/FOPS/machine model not specified on the ROPS/FOPS label.
- Vehicles GVW (including attachments, restrained payload, fuel and operator) in excess of the maximum weight specified on the ROPS label.
- Missing seatbelts.
- Any unauthorized repair.
- Incomplete/improper installation.

Other conditions may require imminent service but may not render the unit immediately unusable.

Examples are:

- Faded paint.
- Faded, hard to read ROPS/FOPS label.
- Slightly corroded mounting hardware.

ROPS/FOPS must be inspected immediately after any type of collision, rollover, or impact. If any damage is evident the ROPS/FOPS must be removed from service, repaired and/or replaced.

When a ROPS/FOPS is removed or reinstalled, mounting hardware must be examined for signs of over stressing. Damaged mounting hardware must be replaced with proper specification hardware before placing the ROPS/FOPS back in service.

Properly maintained seat belts are essential to compliment the operator crush protection designed into the ROPS. All seatbelt and/or seatbelt anchorage systems that show evidence of cuts, fraying or wear, significant discolorations due to exposure to the elements, heavily soiled with oil, grease, or fuel, or any type of damage must be immediately replaced regardless of age.

Operators are to be instructed to properly adjust and use seat belts at all times.

GENERAL SAFETY

Never Operate:

- If you are under age 16 or without a valid driver's license.
- At speeds too fast for your skills or conditions.
- While under the influence of Alcohol or Drugs.
- On hills steeper than 15 degrees.
- On public roads or paved surfaces.
- With more than two passengers (five for crew models).
- With any passenger who cannot reach the grab handles.
- With passengers in cargo box.
- With non-approved accessories or modifications. They may seriously affect stability.

ALWAYS:

- Wear your seatbelt. Vehicle rollover could cause death or serious injury.
- Make sure all latches are secure and safety cab net is tight before operating the vehicle.
- Wear a helmet and eye protection.
- Reduce speed and use extra caution while carrying passengers.
- Avoid sharp turns or turning while applying heavy throttle.
- Operate slowly in reverse – avoid sharp turns or sudden braking.
- Make sure passengers read and understand all safety labels.

Operator Safety

- Operator and passengers must fasten seatbelt while the vehicle is in use. Never operate your vehicle in fast-flowing water or in water deeper than the floorboard, which may void the warranty. Wet brakes may have reduced stopping ability. Test your brakes after leaving water. If necessary, apply them lightly several times to let friction dry out the pads.
- Check terrain before attempting to climb a hill. Never climb hills with excessively slippery or loose surfaces. Never open the throttle suddenly or make sudden gear changes. Never go over the top of a hill at high speeds.
- Always use the proper size and type of tires specified in this manual. Always maintain proper tire pressure as specified on safety labels.

- Never modify this vehicle through improper installation or use of accessories
- Never exceed the stated load capacity for this vehicle. Cargo should be properly distributed and securely attached. Reduce speed and follow the instructions in this manual for hauling cargo or pulling a trailer. Allow greater distance for braking.
- Always put the vehicle in Park before getting out of the vehicle.
- Always remove the ignition key when the vehicle is not in use to prevent unauthorized use or accidental starting.
- Hot components can cause burns and fire. Do not touch hot engine system components. Always keep combustible materials away from the engine. Use caution when traveling through tall grass, especially dry grass.
- Do not carry a passenger until you have at least two hours of driving experience with the Intimidator.
- Always keep hands and feet inside the vehicle at all times.
- Always inspect the vehicle before each use to make sure it's in safe operating condition. Follow inspection procedures described in this manual.

Operating a Damaged Vehicle

Operating a damaged vehicle can result in an accident. In case of an overturn or other accident, have a qualified service dealer inspect the entire machine for possible damage, including (but not limited to) brakes, throttle and steering systems.

Operating at Excessive Speeds

Operating this vehicle at excessive speeds increases the operator's risk of losing control.

Operating on Pavement

This vehicle's tires are designed for off-road use only, not for use on pavement. Operating this vehicle on paved surfaces may cause excessive tire wear and may adversely affect the handling of the vehicle, and could result in loss of control, accident, or overturn. Avoid operating the vehicle on pavement. If operating on pavement is unavoidable, travel slowly and avoid sudden turns or stops.

Turning Improperly

Turning improperly could cause loss of traction, loss of control, accident or overturn. Always follow turning procedures for turning. Never turn abruptly or at sharp angles. Never turn at high speeds. Never abruptly accelerate while turning.

Jumps and Stunts

Attempting wheelies, jumps and other stunts increase the risk of an accident or overturn. Never attempt wheelies, jumps or other stunts. Avoid exhibition driving.

Improper Hill Climbing

Climbing hills improperly can cause loss of control or vehicle overturn. Do not climb a hill or drive down a hill over 15 degrees.

Stalling While Climbing a Hill

Stalling or rolling backwards while climbing a hill could cause an overturn. Always maintain a steady speed when climbing a hill.

If all forward speed is lost:

- Apply the brakes. Place the transmission in reverse and slowly allow the vehicle to roll straight downhill while applying light brake pressure to control speed.

If you begin rolling downhill:

- Never apply engine power. Apply the brakes gradually until the vehicle is fully stopped. Place the transmission in reverse and slowly allow the vehicle to roll straight downhill while applying light break pressure to control speed.

Improper Tire Maintenance, Type or Size

Operating this vehicle with improper tire size or type may void the warranty. See your dealer for details. Operating this vehicle with uneven or low tire pressure could cause loss of control or accident. Always use the size and type of tires specified for your vehicle. Always maintain proper tire pressure as described in the owner's manual and on the safety labels.

Equipment Modifications

We strongly recommend that consumers do not install any after-market equipment that may increase the speed or power of the vehicle, or to make any other modifications to the vehicle for these purposes. Any modifications to the original equipment of the vehicle create a substantial safety hazard and increase the risk of bodily injury.

The warranty of the Intimidator will be terminated if any unauthorized equipment has been added to the vehicle, or if any modifications have been made to the vehicle, that increase the speed or power.

The addition of certain accessories, including (but not limited to) mowers, blades, large tires, sprayers, or large racks, may change the handling characteristics of the vehicle. Use only factory approved accessories, and familiarize yourself with their function and effects on the vehicle.

SAFE RIDING GEAR

Always wear appropriate clothing when riding the Intimidator. Wear protective clothing for comfort and to reduce the chance of injury.

Helmet

Wearing a helmet can prevent a severe head injury. Whenever riding the Intimidator or any Utility Vehicle, always wear a helmet that meets or exceeds established DOT (U.S. Department of Transportation) safety standards.

Eye Protection

Do not depend on eyeglasses or sunglasses for eye protection. Always wear shatterproof goggles or use a shatterproof helmet face shield.

Gloves

Wear gloves for comfort and for protection from sun, cold weather and other elements.

Boots

Wear sturdy footwear. Do not drive or ride vehicle with bare feet.

Clothing

Wear long sleeves and long pants to protect arms and legs.

FEATURES, CONTROLS and OPERATION

Ignition Key

Your key is a series type key, of which there are a high range of numbers. It is highly recommended that you obtain additional copies of your key. If all keys are lost, a replacement ignition switch must be installed.

Instrument Cluster



Your Intimidator is equipped with a digital LCD screen. High pressure water or soap may damage components.

The LCD screen will display the following:

- Seat belt reminder.
- Gear Indicator – Displays the gear shifter position.
 - P – Park**
 - R – Reverse**
 - N – Neutral**
 - L – Low Gear**
 - H – High Gear**
- Odometer – Displays the overall distance traveled by the vehicle.
- Engine Hours – Displays the overall hours the engine has operated.
- Season – Miles and engine hours.
- Menu – Adjust LCD screen brightness.



The Battery meter, or BDI, is an auxiliary gauge that displays the percentage of battery life remaining, an hour meter and any error code if one should exist.

NOTICE: If the vehicle batteries are low and the vehicle is only allowed to charge for a short period of time, the battery meter may display an incorrect charge percentage.

When charging, always allow enough time for vehicle to completely charge.

To adjust the LCD backlight brightness:



- Press the center button once
- Press either the 1st, or 2nd, button from the left to adjust brightness up or down

Switches



- A - Light Switch**
- B - 2wd/4wd Switch**
- C - Locking Rear Differential**
- D - Electric Dump Bed (If equipped)**

Lights

All models come equipped with the new automotive style headlight. Press the left side of the rocker switch to turn on the low beam lights. Press the right side of the rocker switch to turn on high beam lights. The middle position of the switch is off.

Dash Lights

All of your warnings and lights can be found on the small dash gauge, not the main gauge.

Engaging and Disengaging 4WD

WARNING:

- Do not drive in 4wd on a paved surface.
- Do not engage 4wd while the rear wheels are spinning without traction. This may cause severe drive-shaft and clutch damage. Always engage 4wd while the rear wheels have traction or are at rest.
- Engage 4wd before getting into conditions where front wheel drive may be needed. If the rear wheels are spinning, release the throttle before switching to 4wd.

To engage 4wd, press the 4wd dash switch so that the switch light is illuminated. You may engage 4wd while the vehicle is moving while taking the precautions mentioned above.

To disengage 4wd, press the 4wd dash switch so that the switch light is off. In some situations, the front differential may remain locked after turning the 4wd switch off. If this occurs, you may continue to notice increased steering effort and some vehicle speed restrictions. Perform the following procedure to unlock the front differential.

1. Stop the vehicle.
2. Operate in reverse for at least 10 feet.
3. Shift into a forward gear and drive.

Locking Rear Differential

The rear differential lock switch is located on the driver's side of the dash to the immediate right of the steering wheel. To engage the differential lock, press the left side of the switch and the switch light will turn on, meaning the differential lock is engaged. If one of the rear wheels should slip, press the switch to turn on the differential lock. Both wheels will then turn together, reducing slippage.

When the ignition is turned off, the rear differential locker is automatically engaged.

DANGER:

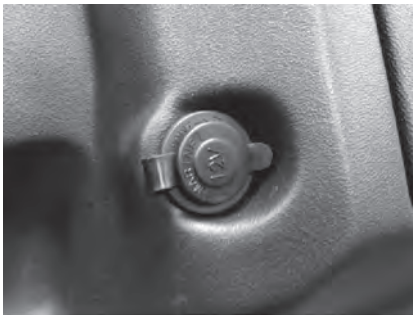
- Steering and vehicle performance will be altered with the rear differential lock engaged.
- Do not operate faster than 10 mph.
- Do not attempt to turn with the differential lock engaged.

Electric Dump Bed (if equipped)

Press and hold the left side of the rocker switch to dump the cargo bed. Quickly release the switch when the tilt height has maxed out or the actuator starts to make a clicking sound. To lower the bed, press and hold the right side of the rocker switch. Quickly release the switch when the bed is down or the actuator starts to make the same clicking sound.

ELECTRICAL

Accessory, 12V Electrical Outlet



The 12 volt receptacle is located on the passenger side of the dash, left of the glove box.

- This outlet is activated when the key is switch is on the "ON" position.
- Do not connect any device that draws more than 120 watts to this connector, or the battery may discharge very rapidly or the outlet may fail.
- Do not use as a cigarette lighter.
- Do not use when wet.
- Unplug accessory when the vehicle key is switched to the "OFF" position.

Adding switches and in-dash accessories

Your Intimidator is designed to allow the dealer add more switches for accessories and “built-in” accessories like a GPS or radio in the center of the dash above the cup holders. The dash has to be modified to fit most accessories. To minimize the risk of damage to the vehicle, contact your authorized dealer.

Parking Brake

Your Intimidator is equipped with a Park gear in the gearbox. While your vehicle is in Park, both rear wheels will lock, serving as your Parking Brake. Your vehicle's transmission should be engaged in “P” (Park) at all times when not in use. It is okay to engage and disengage your vehicle in “P” (Park) on an incline. If you are hauling or towing heavy loads, always Park on level ground.

WARNING:

The vehicle's gear shift lever comes properly adjusted from the factory so that the Park gear is fully engaged and will not slip out of Park. During every pre-ride inspection, inspect that the gear shift lever is fully engaged into Park and will not slip out of Park. Have your authorized dealer annually inspect, lubricate, adjust or replace the shifter cable.

WARNING:

While on an incline, never leave your vehicle at any time when loaded or hooked to a trailer. When your vehicle is not in use or key is switched to the off position, always place the transmission in “P” (Park).

Always tie down your vehicle with chains or straps when being transported on a truck or trailer. Never rely only on the Parking Brake. See “Transporting your Intimidator” on page 42.

To Engage the Parking Brake

Use the shifter on the right side of steering wheel to place the vehicle's gearbox into Park.

Rollover Protection Structure (ROPS)

The Rollover Protection Structure (ROPS) on this vehicle meets American National Standard Institute (ANSI) Standards and OSHA standards for rollover performance requirements. Always have authorize Intimidator, Inc., dealer thoroughly inspect the ROPS if it ever becomes damaged in any way.

No devise can assure occupant protection in the event of a rollover. Always follow safe operating practices outlined in this manual to avoid a vehicle rollover.

DANGER:

- Vehicle rollover could cause serious injury or death. Always avoid operating in a manner that could result in vehicle rollover.
- Do not grab or hold ROPS while vehicle is moving. If a rollover occurs, holding to the roll cage could crush your hand.
- Modifying or cutting the ROPS can cause serious injury or death.
- Do not add any unauthorized accessory that bolts into the ROPS mounting points.

Seat Removal

Pull up on the front of the seat and slide it towards the front of the vehicle. To install the seat, slide the seat into the rear of the seat base until the two metal studs attached to the front of the seat are aligned with the two rubber grommets attached to the front of the seat base. Push down firmly on the front of the seat until the studs are fully seated into the grommets.

Seatbelts & Safety Cab Nets



DANGER:

Falling from a moving vehicle could result in serious injury or death. Always fasten your seatbelt and secure the safety cab net.

Riding in this vehicle without using the factory installed cab nets increases the risk of serious injury or death in the event of an accident or overturn. They must be used by both operator and passengers at all times. Make sure all latches are secure before operating the vehicle.

Always inspect cab nets for tightness, wear and damage before each use. This vehicle is equipped with 3-point seatbelts for occupants.

Always make sure the seatbelts are secured for all riders before operating. If the driver seat belt is not fastened you will receive an audible and flashing alarm until it is fastened.

Tilt Steering

Your Intimidator is equipped with tilt steering that can be adjusted by pulling the tilt-steering lever towards you, then lifting the steering wheel up or down. The tilt steering lever is located on the steering column, just behind the steering wheel.



Shifting Gears

The Intimidator is equipped with a gear selection icon, shown on the instrument cluster's digital display. The brake pedal must be applied in order to start the vehicle and should be applied while shifting.

WARNING:

The vehicles gear shifter comes properly adjusted from the factory so that the Park gear is fully engaged and does not slip out of Park. Have your authorized dealer annually inspect, lubricate, adjust or replace the shifter cable.



Hauling Cargo

DANGER:

Always follow these precautions when hauling cargo:

- Driving with passengers in the cargo box can result in severe injury or death. Never allow passengers to ride in the cargo box. Passengers must always ride in the cab with seat belts fastened securely.
- Hauling cargo improperly can alter vehicle handling and may cause loss of control or brake instability, which can result in serious injury or death.
- Never exceed the maximum weight capacity of the vehicle. When determining the weight you are adding to the vehicle, include the weight of the operator, passenger, accessories, cargo loads and the load on the trailer tongue. The combined weight of these items must not exceed the maximum weight capacity.
- Reduce speed and allow greater distances for braking when hauling cargo.
- Always load the cargo box with the load as far forward and as low as possible.
- When operating over rough or hilly terrain, reduce speed and cargo to maintain stable driving conditions
- Always operate the vehicle with extreme care when hauling or towing loads.
- Slow down and drive in low range if possible.
- Secure all loads before operating.
- Vehicle should never exceed 10 mph (16kph) while towing a heavy load on a level grass surface. Vehicle speed should never exceed 5 mph (8 kph) when towing heavy loads in rough terrain, while cornering, or while ascending or descending a hill.

- **HEAVY LOADS CAN CAUSE BRAKING AND CONTROL PROBLEMS.** Use extreme caution when applying brakes with a loaded vehicle. Avoid terrain or situations that may require braking downhill. Allow yourself extra distance for braking.

Dumping the Cargo Box

WARNING:

If the cargo box is loaded to full weight capacity, it may be difficult to dump. Use extreme caution.

To use the cargo dump box:

1. Select a level site to dump the cargo box. Do not attempt to dump or unload the vehicle while parked on an incline.
2. Apply the brakes. Place the gearbox in Park.
3. Dismount the vehicle.
4. Ensure that the cargo is positioned evenly.

DANGER:

If the weight distribution on the box is located towards the rear of the box when the release lever is lifted, the box may dump unexpectedly and cause serious injury.

5. Lower the tail-gate.
6. Stand clear and pull the up on the cargo box release lever, located on the divers-side cargo box control handle. Lift the front of the cargo box to dump the cargo.
7. Lower the cargo box and push down securely to latch.



Bed handle and lever to release bed latch



Standard lift assist on dump box



Electric actuator on dump box

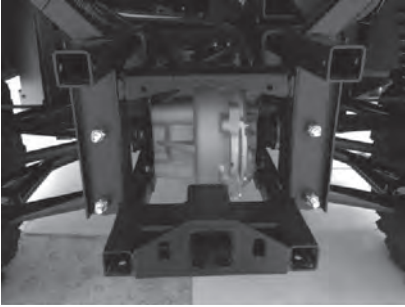
Cargo Bed Tailgate

To open the tailgate, twist the latch on the middle of the tailgate then pull. The tailgate is supported by a lever on each side of the cargo bed. Do not remove the levers.

WARNING

To avoid personal injury, do not sit or stand on the tailgate. Do not place fingers or hands between the tailgate and the arm (latch) when closing, or fingers or hands may be pinched.

Towing Loads



2" rear receiver hitch

Towing improperly can alter vehicle handling and may cause loss of control or brake instability.

Always follow these precautions when towing:

1. Never load more than 200 lbs. tongue weight on the rear towing bracket.
2. Never load more than 300 lbs. tongue weight on the front towing bracket.
3. Do not operate the vehicle faster than 10 MPH when hauling or towing loads on a level surface.
4. Vehicle speed should never exceed 5 MPH when hauling or towing loads on uneven surfaces, rough terrain, cornering, or while ascending or descending a hill.
5. Do not tow more than the recommended weight for the vehicle.
6. Attach a trailer to the rear trailer hitch bracket only. Do not attach a trailer to any other location or you may lose control of the vehicle.
7. Never tow a trailer on a grade steeper than 15 degrees.
8. **Always operate in low range when hauling or towing in excess of 200 lbs with either the cargo bed or a trailer.**

Intimidator Tow Capacity Chart

Model	Max. Towed Load Weight on level ground*	Max. Towed Load Weight on 15 degree grade*	Max. Rear Hitch Tongue Weight	Max. Front Hitch Tongue Weight	Maximum Towing Speed on level ground*	Maximum Towing Speed on 15 degree grade*
Intimidator EV	1,500 lbs.	500 lbs.	200 lbs.	300 lbs.	10 mph (16 kph)	5 mph (8 kph)
Intimidator EV XD4	1,500 lbs.	500 lbs.	200 lbs.	300 lbs.	10 mph (16 kph)	5 mph (8 kph)

**In low range*

Adjusting Rear Spring Position



All four shock absorbers have four (4) spring position adjustments, which will tighten or loosen the spring travel rate to adjust the suspension for different terrain and payload conditions. If you plan to haul heavy cargo or have a heavy accessory, like a snow plow, you can tighten the spring rate by moving the silver ring up. In doing so, the vehicle will not squat as much, giving you more ground clearance and better steering control.

In addition to the four spring position adjustments, the rear shock absorbers have multiple mounting positions to further adjust the stiffness of the ride by changing the angle in which the shocks are mounted. With heavy loads, the shocks can be mounted in a near-vertical position. If you haul light-to-medium size loads and want a smoother ride, the shocks can be mounted in more of an angle, which also will increase wheel travel.

DANGER:

To avoid personal injury, be sure to work on a firm, flat and level surface with the engine shut off, transmission in "P" (Park). Keep the position of the left and right shock absorbers equal. Uneven adjustments can cause poor handling and loss of control, which could lead to an accident.

NOTE: You will need a special tool to adjust the shock spring rate or take your vehicle to an authorized dealer.

SERVICE AND MAINTENANCE

Periodic Maintenance Chart

(following pages 32-33)

Careful periodic maintenance will keep your vehicle in the safest, most reliable condition. Inspection, adjustment and lubrication of important components are explained in the periodic maintenance chart.

Inspect, clean, lubricate, adjust and replace parts as necessary. When inspection reveals the need for replacement parts, use only genuine Intimidator parts available from your authorized dealer.

Maintenance intervals in the following chart (pages 36-37), are based upon average riding conditions. Vehicles subject to severe use must be inspected and serviced more frequently.

Severe Use Definition

- Very cold or hot weather operation
- Prolonged low speed, heavy load operation
- Frequent or prolonged operation in dusty environments
- Frequent immersion in mud, water or sand

If your vehicle falls under the Severe Use definition, perform all maintenance at intervals more frequent than stated on the chart.

PERIODIC MAINTENANCE

ITEM	MAINTENANCE INTERVAL (whichever comes first)	
	Hours	Calendar

Clean engine, battery charger surroundings and components from debris		Pre-Ride
Seat belts		Pre-Ride
Shift linkage		Pre-Ride
Brake fluid level and pressure		Pre-Ride
Steering		Pre-Ride
Front suspension		Pre-Ride
Rear suspension		Pre-Ride
Tires		Pre-Ride
Wheels/fasteners		Pre-Ride
Frame fasteners		Pre-Ride
Headlamp & tail lights		Pre-Ride
Axle and steering joint boots		Pre-Ride
Check battery water level		Monthly
Torque battery terminals		Monthly
Place dielectric grease on batteries		Monthly
Brake pad wear	50 hr	3 Months
Transmission/gearbox oil	50 hr	3 Months
Rear differential oil	50 hr	3 Months
Front differential oil	50 hr	3 Months
Lubricate front suspension	100 hr	12 Months
Lubricate rear suspension	100 hr	12 Months
Steering	150 hr	12 Months
Throttle cable	150 hr	12 Months
Wiring	250 hr	24 Months
Brake fluid	500 hr	24 months
Front wheel bearings	500 hr	36 months
Toe adjustment	-	-

REMARKS

Remove all debris

Check for damage and operation

Make sure Park will fully engaged. Adjust if necessary

Inspect. Adjust, lubricate or replace as needed

Inspect. Fill if necessary

Torque to 140 in. lb.

Inspect, lubricate, reapply as needed

Inspect periodically

Inspect level, change yearly

Inspect, lubricate, change yearly

Inspect level, change yearly

Lubricate polyurethane joints

Lubricate polyurethane joints

Inspect, lubricate

Inspect, adjust, lubricate, replace if needed

Inspect for wear. Apply dielectric grease to connectors subject to water, mud, etc.

Change every two years or 500 hours

Inspect, replace as needed

Inspect, adjust as needed

INTIMIDATOR EV ENGINE INFORMATION

Make	Schabmueller
Type	AC-powered, brushless
Peak HP	30 hp
Peak Torque	120 ft. lb.

INTIMIDATOR LUBRICATION AND FLUID CHART

Item	Lube	Amount
Battery water level	Distilled water	Whatever it takes
Brake fluid	DOT 3	Whatever it takes
Front differential oil	Hydraulic Oil	180 ml
Rear differential oil	80w-90 gear oil	550 ml
Transmission/gearbox oil	Dexron VI	700 ml

Fuses and Relays

Fuses can be found in two locations; a fuse block under the hood and two single fuses below the block.

Fuse Block



1	Differential Lock	10-amp
2	Headlights Low	15-amp
3	Headlights High (if equipped)	15-amp
4	Electric Actuator (if equipped)	20-amp
5	12-volt Accessory Outlet	20-amp
A	Relay – Headlights Low	-
B	Relay – Headlights High	-

Method

¼" above metal plates in battery

Maintain level between fill lines

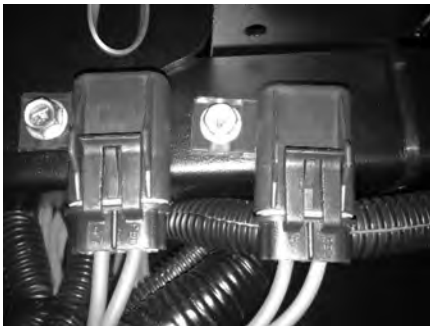
-

-

-

Power Converter Fuses

Located under fuse block, both are 30-amp.



Motor



An AC-powered, 48 volt, brushless motor made by Schabmuller powers your Intimidator EV. The IP45 motor is water resistant, not waterproof. If the motor should overheat, the digital display on the right of the speedometer will display “motor hot.” Stop the vehicle and allow time for the motor to cool down before continuing.

Controller



Curtis controller error codes can be referenced at our website:
www.intimidatorutv.com

NOTE: The 650amp Curtis controller is water resistant, not waterproof. Avoid spaying the controller with high-pressure water. Do not submerge the controller.

The controller, or computer, is the brain of the vehicle. The vehicle rate of acceleration and deceleration can be adjusted by some authorized dealers. If a fault occurs, the controller will display error codes on the small digital display, right of the speedometer.

The control has two status lights on the casing. Below is a troubleshooting chart, explaining the lights.

TYPES OF LED DISPLAY

DISPLAY**STATUS**

Neither LED illuminated

Controller is not powered on, has a dead battery, or is severely damaged.

Yellow LED flashing

Controller is operating normally.

Yellow and red LEDs both on solid

Controller is in Flash program mode.

Red LED on solid

Watchdog failure.
Cycle KSI to restart.

Red LED and yellow LED flashing alternately

Controller has detected a fault. 2-digit code flashed by yellow LED identifies the specific fault; one or two flashes by red LED indicate whether first or second code digit will follow.

Batteries



Batteries located under seat

DANGER:

Batteries emit explosive gases; flame is strictly prohibited. The Batteries contain sulfuric acid (electrolyte) which can cause serious burns, so be careful not to make contact with eyes or skin. If you get battery acid on your skin, wash it off immediately with water. If you get battery acid in your eyes, flush it out immediately with water and then see a doctor. Keep all flames and sparks, including cigarettes, away from the batteries.

NOTE:

- The batteries require maintenance. Check the battery terminals and water levels monthly.
- Do not allow any battery terminal to loosen. The bolt should remain torqued at 140 ft. lb.
- Keeping the battery terminals coated with dielectric grease or petroleum jelly will prolong its life.
- Even when vehicle is not being used, charge your batteries bi-weekly to prevent self-discharge.
- Do not store your vehicle in below-freezing temperatures without keeping the charger plugged in.

Proper battery maintenance will prolong its life. If your vehicle does not have a battery watering system, check the water level monthly. When needed, fill the batteries with distilled water to maintain a fluid level of $\frac{1}{4}$ inch above the metal plates in each battery cell. If you allow the water level in the battery to fall below the metal plates, the battery may self-discharge and will need to be replaced.

If the battery terminal becomes loose, it could cause a short or melt the battery terminal. Check the terminal bolt torque monthly. It should remain at 140 ft.lb.

When storing your Intimidator EV, leave the charger plugged-in or charge the batteries bi-weekly to prevent self-discharging, which could ruin the batteries. It is best to store your vehicle out of below-freezing temperatures. If this is not an option, keep the charger plugged in at all times. The charger will trickle charge, keeping the batteries from self-discharging and freezing. See Storing Your Intimidator on page 48 for additional information.

If one battery fails, your vehicle's drive distance per charge will dramatically reduce. If this occurs, charge the vehicle then unhook all batteries. Test each battery for proper voltage, one at a time.

The batteries are warranted by the battery manufacturer, US Battery, for one year from factory purchase date. For help, contact Intimidator, Inc. service department of visit http://www.usbattery.com/usb_dealers_map.html to find a US Battery distributor.

Charging System



On-board battery charger located under hood



Battery Charger meter

WARNING:

The Battery Charger will become hot when in use. Always leave the hood open when the battery charger is plugged in. Keep any debris clear from the charger and keep the charging area well ventilated. Always use a 3-prong (with ground) 12-gauge extension cord, plugged into a 15-amp circuit breaker. Do not overload circuit by having two Intimidator EV's, large appliances or tools plugged into the same circuit breaker. Never allow the charger to get wet while charging or plugged into an outlet.

NOTE: The on-board charger is splash resistant but not waterproof. Do not submerge the charger. Do not leave the vehicle in the rain with the hood open. When washing the vehicle, do not directly spray water on the charger.

The on-board battery charger is located under the front hood. The charger plug-in is located under the seat on the passenger side of the vehicle. It is okay to leave the charger plugged into an outlet for an extended period of time. The charger will automatically turn on and off as needed. It will take around 8-10 hours to charge your battery from 0% to 100%. When the charging is complete, the meter on the battery charger, pictured above, will illuminate a steady green LED light. See the Charging Indication Lights chart below.

To charge your vehicle:

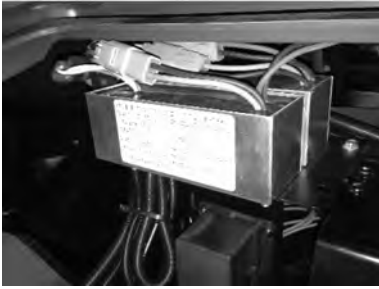
1. Park the vehicle in a well-ventilated, indoor area.
2. Locate an outlet on a circuit with a 15-amp circuit breaker and no other major appliances plug into.
3. Open the front hood and make sure the charger is free of debris. Keep the hood open.
4. Plug in the vehicle using a 3-prong, 12 gauge extension cord.
5. Keep the vehicle plugged in until the charger automatically turns off and the full charge light on the charger is illuminated. If the charger does not automatically turn off in twelve hours, unplug the charger and notify your authorized dealer.

For charging system troubleshooting, see page 50.

Charging Indication Lights

1st Amber LED	Illuminated configured for Wet Cell and AGM batteries
2nd Amber LED	Illuminated configured for Gel Cell batteries
1st Red LED	Charging – Initial Charging up to 30%
2nd & 3rd Red LED	Charging – 60% Complete
1st, 2nd & 3rd Red LED	Charging – 90% Complete
Blinking Green LED	Finishing Stage (Note: Battery type indicator will blink during this stage)
STEADY GREEN LED	Charge Complete

Power Converter



The Intimidator EV has two 48 volt-to-12 volt power converters underneath the hood to run all the 12 volt electronics. Some additional accessories, like lights, can be added. To run large accessories, like a winch, you would need to purchase an Intimidator winch battery kit from Bad Dawg Accessories.

Jump Starting

DANGER:

Do not attempt to jump start the Intimidator EV.

Transmission/Gearbox

Always check and change the transmission oil at the intervals outlined in the Periodic Maintenance Chart beginning on page 32. Refer to the Lubrication and Fluid Recommendations chart for type and capacities.

Oil Check



The level check/fill plug is located on the back, passenger side of the gear case. Maintain the oil level even with the bottom of the level check/fill plug hole threads.

1. Position the vehicle on a level surface.
2. Remove the level check, fill plug. Check the oil level.
3. Add the recommended oil as needed.
4. Reinstall both fill plugs.

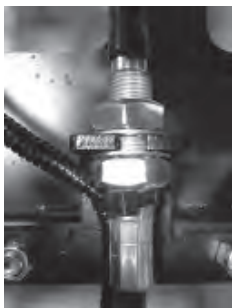
Oil Change



The drain plug is located on the lower front, driver side of the gear case.

1. Position the vehicle on a level surface.
2. Place a drain pan under the gear case.
3. Remove the drain and fill plug. Allow the oil to drain completely.
4. Clean and reinstall the drain plug.
5. Add the recommended oil.
6. Reinstall the fill plug.
7. Check for leaks.

Adjusting the Shifting Linkage



Shift linkage adjustment near gearbox



Shift linkage adjustment under hood

WARNING:

The vehicle's gear shift lever comes properly adjusted from the factory so that the Park gear is fully engaged and will not slip out of Park. During every pre-ride inspection, inspect that the gear shift lever is fully engaged into Park and will not slip out of Park. Have your authorized dealer annually inspect, lubricate, adjust or replace the shifter cable.

If the transmission shifting lever on the dash is not fully engaging "P" (Park) or "L" (Low Range), it needs to be adjusted.

This can be done by:

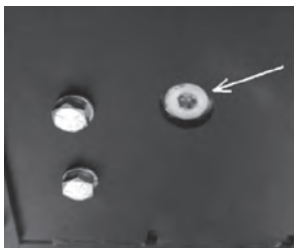
1. Locate the shift linkage bracket on top of the skid plate, on the passenger side of the gearbox.
2. Depending on which way the shifter needs to be adjusted, loosen one of the jam nuts, and then tighten the other jam nut until they both are snug against the shifter bracket. Adjust in 1/8" intervals until the shifting is correct.
3. If needed, further adjustment can be made under the hood on the linkage pictured above.

Differentials

The front and rear differentials are what your vehicle's axles are attached to which drive the tires. Always check and change the differential oil at the intervals outlined in the Periodic Maintenance Chart. Maintain the oil level even with the bottom thread of the fill plug hole. Refer to the Front or Rear Differential specifications on the Oil Lubrication and Fluid Recommendations chart for type and capacities.



Front Differential Check/Fill plug



Front Differential drain plug



Rear Differential Check/Fill plug



Rear Differential drain plug

Differential Oil Check

On the front differential, the check/fill plug is located on the driver's side rear. On the rear differential, the check/fill plug is located on the passenger side rear.

1. Position the vehicle on a level surface.
2. Place the gearbox in Park.
3. Remove the fill plug. Check the oil level.
4. Add the recommended oil as needed.
5. Reinstall the fill plug.

Differential Oil Change

On the front differential, the drain plug is located on the bottom center. On the rear differential, the drain plug is located on the passenger side.

1. Position the vehicle on a level surface.
2. Place gearbox in Park.
3. Remove the fill plug.
4. Place a drain pan under the drain plug.
5. Remove the drain plug. Allow the oil to drain completely.
6. Clean and reinstall the drain plug.
7. Reinstall the fill plug.
8. Fill to correct level.
9. Check for leaks.

Vehicle Submerged in Water

NOTICE:

Never operate in water deeper than the floorboard. If your vehicle becomes immersed in water, major damage not covered under warranty can result if the machine is not thoroughly inspected. Take the vehicle to your dealer before turning on the engine.

Headlights

Depending on model, the headlights are controlled by a two-way or three-way switch in the dash. The outside headlights are driving lights. The inside set of lights are high-beam lights (if equipped).

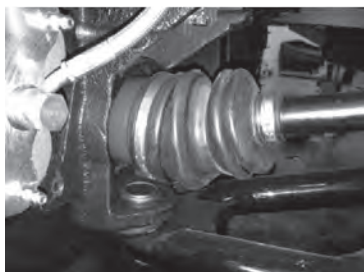
The height and angle of the headlights can be adjusted by:

- Tightening or loosening the 5/16" jam nuts up and down the studs.
- Sliding the 5/16" bolts that fasten the adjustment brackets to the frame.



CV Joint Boots

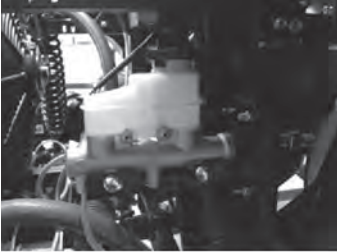
In accordance with the Periodic Maintenance Chart, inspect the joint boots on the front axles, rear axles, tie rod ends and steering rack for damage or deterioration. Replace any damage boot and be sure the joints are greased.



Brakes

The front and rear brakes are hydraulic disc activated by the brake pedal.

Brake Fluid



Inspect the level of the brake fluid before each operation. Always keep the fluid level between the minimum and maximum fill line on the reservoir. Change the brake fluid either every two years, any time the fluid becomes contaminated or if the type and brand of the fluid in the reservoir are unknown.

1. Position the vehicle on a level surface and place transmission in "P" (Park).
2. View the brake fluid level at the reservoir in the driver's side wheel well. The level should be between the upper (MAX) and lower (MIN) level lines.
3. If the fluid level is lower than the upper level line, remove cap and add brake fluid to the upper (MAX) line.
4. Reinstall the cap.
5. Apply the brake forcefully for a few seconds and check for fluid leakage around the fittings.

Brake Inspection

1. Check the brake system for fluid leaks.
2. Check the brake pedal for excessive travel or a spongy feel.
3. Check the friction pads for wear, damage and looseness.
4. Inspect the brake disc spline and pad wear surface for excessive wear.
5. Change pads when worn to 3/64" (1 mm).

TIRES

Tires are an important part of the suspension of the vehicle. Tire construction characteristics and inflation pressure can greatly influence vehicle handling. Intimidator, Inc. always recommends that you always replace tires with standard replacement tires. It is also very important to have tires of the same type and height on all axles, and at the same inflation pressure, on each axle.

DANGER:

Installation of non-standard tires, use of oversized tires or use of different tread patterns can change or impair the handling of the vehicle and may void your warranty. See Warranty Guideline for details.

Tire Tread Depth

Always replace your tires when tread depth is worn to 1/8" (3 mm) or less.

TIRE PRESSURE AND SIZE CHART

Vehicle Position Max Payload	Size	Load Rating (lb)	Air Pressure (psi)	Top Speed Rating (mph) @ Max Load
Front Loaded	26x9R14	750	18	10
Rear	26x11R14	1275	22	10
Front Unloaded	26x9R14	680	12	25
Rear	26x11R14	1000	12	25

Steering Wheel Inspection

Check the steering wheel for specified free play and smooth operation at the intervals outlined in the Periodic Maintenance Chart.

1. Position the vehicle on level ground.
2. Lightly turn the steering wheel left and right. There should be no more than 0.5" of free play.
3. If there is excessive free play or strange noises, or the steering feels rough or "catchy," have the steering system inspected by an authorized dealer.

To center your vehicle's steering wheel:

1. On level ground, drive straight forward for 30 feet. This is easiest done by driving on a painted line, next to a wall or next to any other straight object.
2. Stop the vehicle. Place the transmission in "P" (Park).
3. Remove the steering wheel cap to expose the steering wheel nut.
4. Remove nut with an impact driver or long socket wrench.
5. With your hands or a rubber mallet, gently knock the back of the steering wheel towards the seat until it is removed. Do not use excessive force or the steering wheel may become damaged or forcefully come off. Do not turn the steering wheel or allow the tires to turn.
6. Reinstall Steering Wheel to center position.
7. Reinstall the steering wheel nut.
8. Reinstall the steering wheel cap.

Alignment

**To adjust front tire alignment:**

1. Make sure the steering wheel alignment is correct.
2. Stop the vehicle on a level surface with the tires straight forward.
3. Place the transmission in "P" (Park).
4. Measure the distance between centerline-to-centerline forward (front) of the tires at hub height.
5. Measure the distance between centerline-to-centerline behind (rear) the tires at hub height.
6. Front distance should be 0 inches to 0.25 inches shorter than rear distance. If not, adjust tie rod length.

STORAGE AND MAINTAINING APPEARANCE

Washing the Vehicle

Keeping your vehicle clean will not only improve its appearance but it can also extend the life of various components.

NOTICE:

High water pressure may damage components, including wheel bearings, radiator, transmission seals, brakes, plastic panels, safety labels, electrical switches, electrical components and wiring. Wash the vehicle by hand or with a garden hose, using mild soap.

NOTICE:

Certain products, including insect repellents and chemicals, will damage plastic surfaces. Do not allow these types of products to contact the vehicle. Clean vehicle with automotive soap and water.

NOTICE:

Mud can stain the vehicle's seat and plastic. Immediately wash mud off vehicle with mild soap and water.

Tips

- Avoid the use of harsh cleaners as they can scratch the finish.
- Do not use a power washer to clean the vehicle.
- Do not use medium to heavy duty compounds on the finish.
- Always use clean, microfiber cloths, towels and pads for cleaning and polishing. Old and reused cloths and pads may contain dirt particles that will scratch the surface.
- Grease all zerk fittings immediately after washing. Allow the engine to run for a while to evaporate any water that may have entered the engine or exhaust system.
- If any informational or warning label becomes illegible or comes off, contact your Intimidator dealer to order a replacement label.

Storage

NOTICE:

It is not recommended to store vehicle in direct sunlight.

Preparation for Storage

1. Clean the entire vehicle thoroughly.
2. Change oil in gearbox and both differentials.
3. Check for proper battery water levels.
4. Apply dielectric grease on all battery terminals
5. Plug in on-board battery charger.
6. Put boards under all tires to keep dampness away from the rubber.
7. Put a cover over the vehicle to keep dust and dirt from collecting on it.

TRANSPORTING YOUR INTIMIDATOR

DANGER:

When trailering your vehicle, ALWAYS put the transmission being in Park AND secure the vehicle to the trailer by tying the frame of the Intimidator to the trailer with suitable straps or chains. ***Do not attach a strap or chain to the suspension arms.***

ACCESSORIES

Visit www.baddawgaccessories.com for a complete list of genuine Intimidator accessories.

SPECIFICATIONS

INTIMIDATOR EV

CORE COMPONENTS

Frame	Powder Coated Fusion-Bonded Solid Steel Bridge Frame
Body	Automotive Quality Acrylic Plastic
Front Tires	26x9x14 - 6 ply
Rear Tires	26x11x14 - 6 ply
Wheels	14" Wheels
Front Suspension	Dual A-Arm Independent
Rear Suspension.....	Dual A-Arm Independent
Steering	Rack And Pinion
Braking System	4 Wheel Hydraulic Disc
Parking System	2 Wheel Gear Lock
Seating.....	3 Forward Facing Occupant Bench Seat
Bed Dump	Manual With Gas Assist or Electric
Auxiliary Power	12 Volt Auxiliary Plug
Hitch	2" Receiver Standard
Cargo Bed Space.....	36x56.5x13
Warranty	1 year Limited Warranty

DRIVE SYSTEM

Motor	30 Peak HP 48 Volt AC Electric
Battery System.....	Eight, 6 Volt 2300 Series Liquid Acid with 2 Gauge Cables
On Board Charger.....	Smart Charge System shuts off when charged
Torque (Peak)	119 ft. lbs.
Electronic Speed Control	650 AMP
MAX Horsepower	30HP
Speed	Up to 23 MPH (varies due to terrain and weight)

MEASUREMENTS

Weight	2,069 lbs.
Length.....	113"
Width	63"
Height	78"
Turning Radius	103"
Wheelbase	77"
Frame Clearance	12"
Suspension Travel.....	10" Total Suspension Travel
Cargo Bed Capacity	700 lbs.
Vehicle Payload.....	1,200 lbs.
Towing Capacity	1,500 lbs.

SAFETY

Protection	1.75" Diameter Tubing Five Piece ROPS
Front Protection	1.75" Diameter Tubing Bumper/Brush Guard
Passenger Restraints	3 Point DOT Approved Restraint Belts
Shift Indicator	5 Position Gear Indicator
Headlights	High and Low Beam Head lights
Brake/Tail Light.....	Standard on Every Unit

TROUBLESHOOTING

Trouble	Cause
No engine power	Key switch is not in the proper position <u>Low or no battery charge</u> <u>Check error codes</u> <u>Motor has overheated</u> <u>Speed sensor malfunction</u> <u>Solenoid malfunction</u> <u>Bad battery or batteries</u> Poor terminal connection
Difficult to shift	Shifter out of adjustment Shifter cable stretches Shifter cable dirty or rusted
Vehicle range has dramatically reduced or loss of power	<u>Battery life expired</u> <u>Bad battery</u> <u>Low water</u> <u>Heavy payload</u> <u>Vehicle cab or front window</u> <u>Low tire pressure</u> <u>Insufficient charging</u>

BATTERY CHARGER

Problem: The charge status indicator changes rapidly back and forth from red to green or the green LED will not illuminate after excessive charging time (24 or more hours).

Answer: Disconnect AC power from the charging system. This indication may signify a possible battery or charger problem.

BATTERY CHARGER LED Fault Code Indications

The battery type LED will be OFF during a fault code condition.

30% RED

LED BLINKING NO BATTERY DETECTED

This indication occurs whenever the charger circuitry cannot detect a battery. The charger circuitry will not allow charge current to flow under this condition. With the AC power supply cord unplugged, check the connection to the batteries for proper polarity. Also check for corrosion free secure connections to the battery.

30 & 60% RED

LEDs BLINKING FORMING STAGE TIMEOUT SHUTDOWN

This indication occurs if the battery voltage has risen above 1.75 volts per cell within the first 3 hours of charging. This indicates that a possible battery problem exists and the charge cycle has been terminated at this point.

Curtis controller error codes can be referenced at our website:
www.intimidatorutv.com

Countermeasure

Make sure the key is in "ON" position

Charge batteries

See the Error Code list below

Allow motor time to cool

Check connection. Replace if needed

Replace solenoid

Clean battery cables and terminals

Charge the battery

Battery could have self-discharged

Clean the terminal and tighten securely

Adjust

Clean or replace cable

Renew battery

Unhook all batteries and test them one-by-one

Maintain battery fluid level of 1/4" above plates

Reduce payload or tow weight

The drag created by a front window will slightly reduce vehicles overall range.

Air tires to proper pressure

Allow more time for vehicle to charge

TROUBLESHOOTING

Problem: A green LED was illuminated before disconnecting the power from the charger, but upon reconnection, red LEDs appear and remain on.

Answer: This is the normal operating procedure for the system. It indicates that a reanalysis of the battery status was initiated and after a series of steps the green LED was illuminated.

30, 60 & 90% RED

LEDs BLINKING OVERALL TIMER SHUTDOWN

This indication occurs if the charger has not completed the charge cycle within the allowable factory set time period. This indicates that a possible battery problem exists and that the charge cycle has been terminated at this point.

30 & 90% RED

LEDs BLINKING INTERNAL OVERTEMP SHUTDOWN

This indication occurs if the charger circuitry has detected operating temperatures inside the charger enclosure that are above factory specified levels. This could indicate that a possible charger problem exists and that the charge cycle has been terminated at this point.

30% RED & 100% GREEN

LEDs BLINKING BULK STAGE SHUTDOWN

This indication occurs if the battery voltage does not rise properly during the bulk stage. This indicates that a possible battery problem exists and that the charge cycle has been terminated at this point. Please call technical support for assistance.

LIMITED WARRANTY:

1 YEAR LIMITED WARRANTY

Intimidator 4x4 will, at its option, repair or replace, without charge, any part covered by the warranty which is found to be defective in material and/or workmanship within one year after date of sale to the original retail purchaser of a new Intimidator 4x4 electric model. This limited warranty is non transferrable to a 2nd party and will be subject to certain limitations.

REPLACEMENT PARTS

Intimidator 4x4 dealers will repair or replace, at Intimidator 4x4's option, any defective part during the warranty period. The parts, to be warranted, must be defective in material and/or workmanship. All replacement parts must be obtained from Intimidator 4x4 in order to comply with the manufacturer's warranty.

BATTERY WARRANTY

The batteries used to power the Intimidator 4x4 will carry a 1 year free replacement warranty. These warranty claims will be handled by the battery manufacturer, Interstate Battery. Intimidator 4x4 does not assume any warranty obligation, liability, or modification for this item.

WARRANTY LIMITATIONS AND EXCLUSIONS

This warranty excludes any failures that are not caused by a defect in material or workmanship. This warranty does not cover defects caused by normal wear, accidents, improper maintenance, improper use or abuse of the product, or failure to follow the instructions contained in any owner's manual for operation and maintenance. This warranty also does not cover any vehicle that has been altered structurally, modified, neglected, improperly maintained, or used for purposes other than what the vehicle was designed for. Also, this warranty does not cover physical damage to paint or finish, tearing or puncturing of upholstery material, fading of seats due to exposure, stains on interior, corrosion, or defects in parts components or the vehicle due to fire, explosions or any other cause beyond Intimidator 4x4's control. Warranty does not apply to "wearable" items or items considered being part of normal maintenance. "Wearable" items and normal maintenance

ELECTRIC

components include but are not limited to; spark plugs, wheels and tires, filters, fuel, sealants, lubricants, cosmetic damage, CVT belt, circuit relays/fuses, brake components and coolants. Warranty does not cover personal loss items such as towing charges, mileage, rentals loss, pick-up and delivery fees, or loss of vacation/personal time. The customer must operate and maintain his/her machine within the proper guidelines of the owner's manual.

RESPONSIBILITY OF THE CUSTOMER

It is the responsibility of the customer to register his/her machine for warranty by promptly returning a completed warranty registration card within 30 days from the date of purchase. The registration process can also be completed online at www.intimidator4x4.com by clicking the owners tab then selecting the warranty registration option. Also, the customer must operate and maintain his/her machine within the proper guidelines of the owner's manual.

This warranty gives you specific legal rights, and you may also have other rights which may vary from state to state.

Any warranty issues or questions can be handled by your Intimidator 4x4 dealer or at:

Intimidator 4x4
1 Bad Boy Blvd.
Batesville, AR 72501
(855) 307-0933

SERVICE RECORD

PDI

Date: _____

Hour Meter Reading: _____

Dealer Stamp: _____

1st Service

Date: _____

Hour Meter Reading: _____

Dealer Stamp: _____

2nd Service

Date: _____

Hour Meter Reading: _____

Dealer Stamp: _____

3rd Service

Date: _____

Hour Meter Reading: _____

Dealer Stamp: _____

4th Service

Date: _____

Hour Meter Reading: _____

Dealer Stamp: _____

5th Service

Date: _____

Hour Meter Reading: _____

Dealer Stamp: _____

6th Service

Date: _____

Hour Meter Reading: _____

Dealer Stamp: _____

7th Service

Date: _____

Hour Meter Reading: _____

Dealer Stamp: _____

8th Service

Date: _____

Hour Meter Reading: _____

Dealer Stamp: _____

INTIMIDATOR, INC. UTILITY VEHICLE OWNERS REGISTRATION & TRAINING CERTIFICATE

(Keep original copy on file at your dealership)

VIN/PIN _____

MODEL _____

DATE OF PURCHASE _____

DEALER _____

PURCHASER

LAST NAME _____

FIRST NAME _____

ADDRESS _____

CITY _____

STATE _____

POSTAL CODE _____

DAY PHONE _____

EVENING PHONE _____

Safety Check List

Purchaser: By initialing each line, I understand and give my word of Honor

_____ This Utility Vehicle must not be operated by anyone under the age indicated in the Operator's manual. I will not allow anyone under the age indicated in the Operator's manual to operate this vehicle. Every operator must read and understand the Operator's manual before riding this Utility Vehicle.

_____ This Utility Vehicle must not be operated by anyone who does not have a valid driver's license.

_____ Never ride an Utility Vehicle after consuming alcohol or drugs.

_____ Overly aggressive use on inclines may cause the Utility Vehicle to flip over.

_____ Always ride within your abilities.

_____ Never attempt jumps or other stunts.

_____ Always be extra careful when riding on unfamiliar terrain, steep slopes, or when encountering obstacles.

_____ I have read the above warnings, and I understand that SEVERE INJURY OR DEATH can result from ignoring these warnings or from improper use.

_____ I will watch the safety/training video provided by Intimidator, Inc., before operating this vehicle.

Purchaser's Signature

Date

I have reviewed the safety features and Operator's Manual with this purchaser and to all appropriate immediate family members prior to their taking delivery of this UTV and qualifying them for warranty. The UTV described above has been serviced and approved for delivery by me or an employee on my behalf. I will maintain this Owner Registration Form from the customer and me in a paper form along with other books and records of the dealership.

Authorized Dealership Signature

Date

NOTES: _____

NOTES: _____

INTIMIDATOR

OWNER'S MANUAL

2500 EV Electric Vehicle

For additional information, please see us at

www.intimidator4x4.com

Intimidator, Inc.

1 Bad Boy Blvd.

Batesville, Arkansas 72501

(855) 307-0933