



INSTALLATION INSTRUCTIONS: Intimidator Half-Door

NOTE: Bolts should remain "hand tight" until ALL bolts are installed unless otherwise instructed.



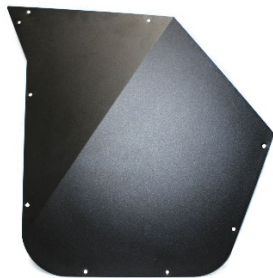
Left Side Door Frame



Right Side Door Frame



Left/Right Side Door Post With Bottom Bracket



Left Side Door Panel



Right Side Door Panel



Paddle Latch



Left Hip Bracket



Right Hip Bracket



Striker Brackets



Left Door Stop Cover Plate



Right Door Stop Cover Plate



Hip Bracket Clamps/Bolt Kits

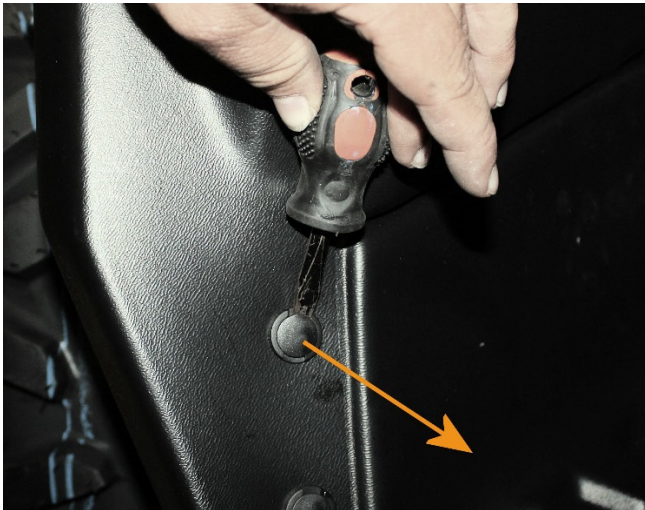
INSTALLATION INSTRUCTIONS: *Intimidator Half-Door*

STEP 1



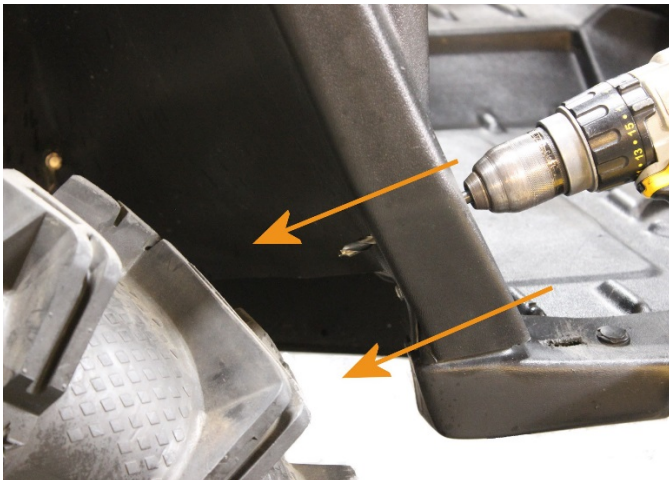
- Locate the two plastic pop rivets on the bottom of the quarter panel.

STEP 2



- Remove the pop rivets with a small, flat head screw driver.
- Place the head of the screw driver between the two parts of the rivet and twist.
- Work around the rivet until you are able to pull the center portion out.
- Remove the remaining portion.

STEP 3



- Use the existing hole as a pilot hole to drill through the frame tube.
- Drill a 3/8" hole through the whole tube (the existing hole is in one side only).
- Repeat for the bottom hole.

Note: The bottom hole is next to the corner of the frame so it is helpful to aim the drill up a bit to avoid drilling through a weld.

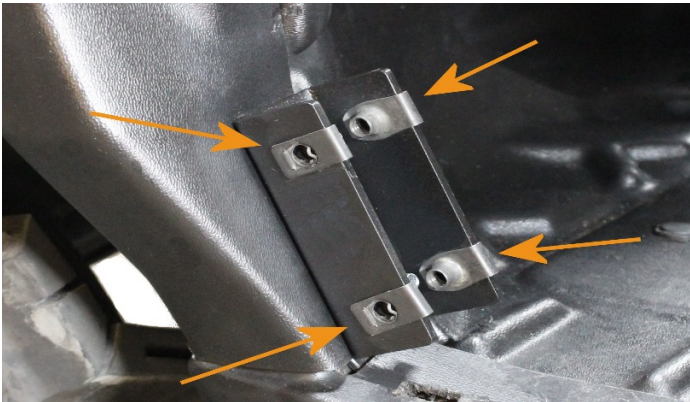
INSTALLATION INSTRUCTIONS: *Intimidator Half-Door*

STEP 4



- Using the provided 5/16 x 2 3/4" bolts and fender washers, install the bottom bracket for the door post.
- Secure the bracket with the provided 5/16 Nylock nut.

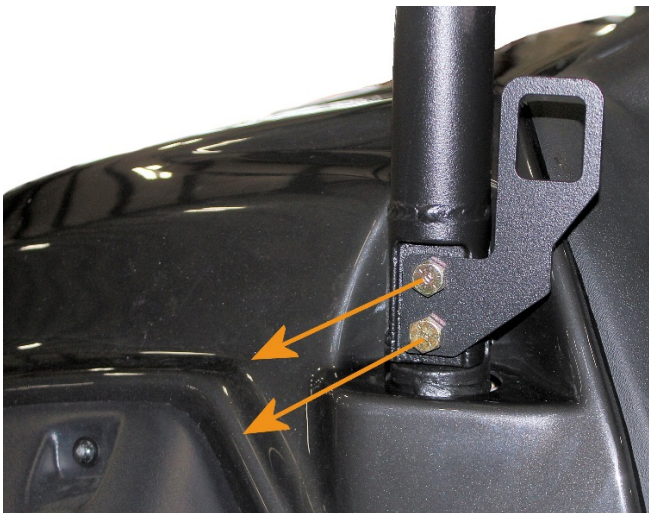
STEP 5



- Install the 5/16 "cage nuts" on the bottom bracket with the flat side facing outward as shown.

Note: There are two sizes of cage nuts. Be sure to use the bigger of the two sizes in this step.

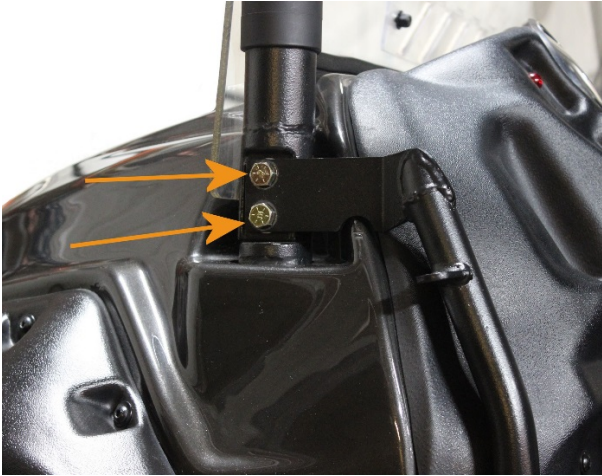
STEP 6



- Remove the safety net bracket from the roll cage coupler.
- Retain the nuts, bolts and washers, they will be needed in the next step.

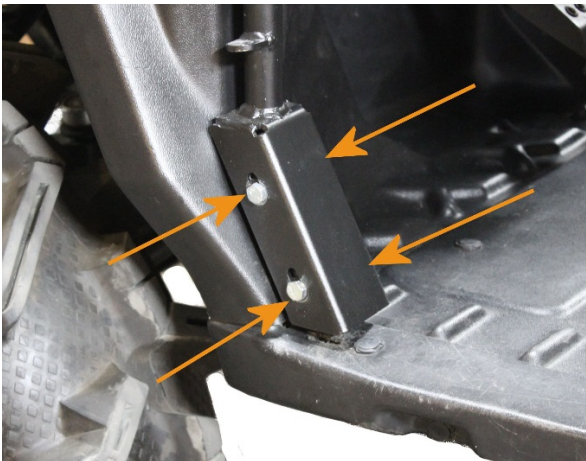
INSTALLATION INSTRUCTIONS: *Intimidator Half-Door*

STEP 7



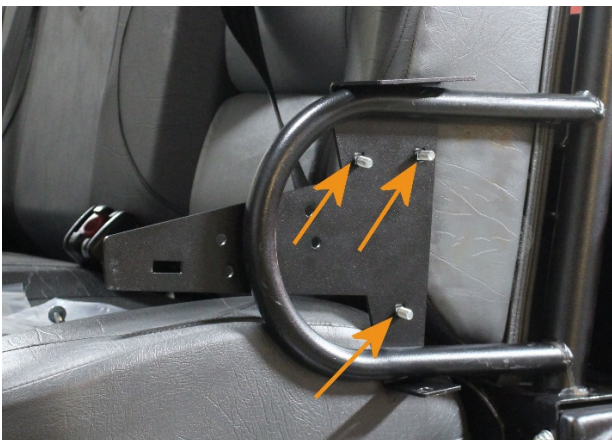
- Using the factory bolts from the previous step, replace the safety net bracket with the Left Side Door Post.
- Make sure the flat washer is used for a spacer between the bracket and the roll cage.

STEP 8



- Using the provided 5/16 x 1" hex head bolts, secure the bottom portion of the Door Post to the Bottom Door Post Bracket.

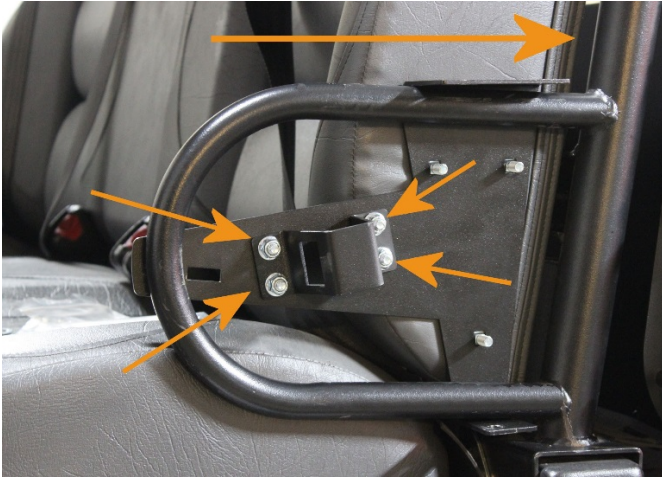
STEP 9



- Set the Hip Bracket in place as shown.
- Insert three of the provided 5/16 x 3/4" carriage bolts.

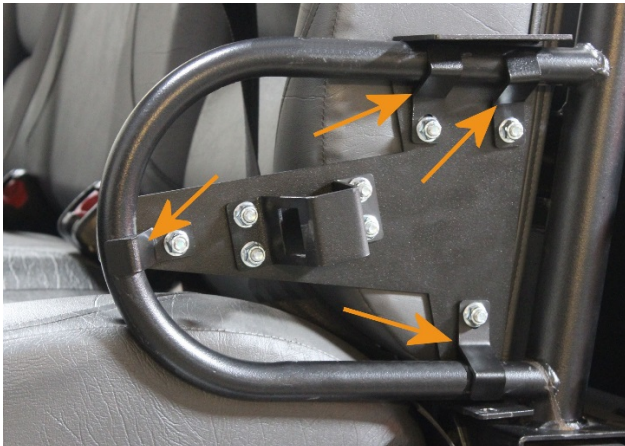
INSTALLATION INSTRUCTIONS: *Intimidator Half-Door*

STEP 10



- First slide the Hip Bracket towards the rear far enough to install the Striker Bracket.
- Use the provided 5/16 x 3/4" hex head bolts along with the Nylock nuts to attach the Striker Bracket to the Hip Bracket by aligning the pre-drilled holes and inserting the bolts as shown here.

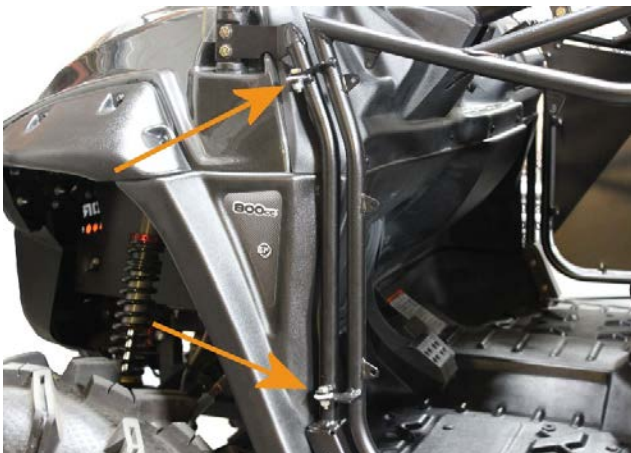
STEP 11



- Install the Hip Bracket Clamps as shown here.
- Use the remaining 5/16 x 3/4" carriage bolt for the front clamp.
- Secure all the bolts with the provided 5/16 Nylon nuts.

Note: Only tighten the bolts enough to hold them in place. Adjustment will be needed in future steps.

STEP 12

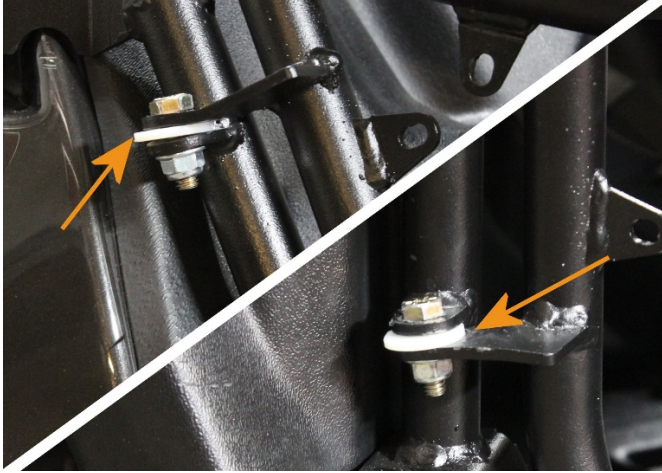


- Attach the Door Frame to the Door Post using the provided 5/16 x 1" hex head bolts along with the Nylock nuts and black nylon washers.

Note: The white Nylon Washers shown here are for illustration only. The Nylon Washers provided in this kit are black.

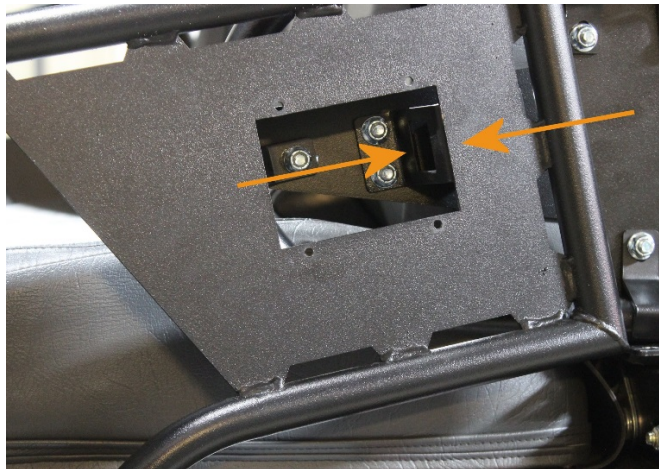
INSTALLATION INSTRUCTIONS: *Intimidator Half-Door*

STEP 13



- Assure that the top and bottom hinges are in the proper location as shown here.

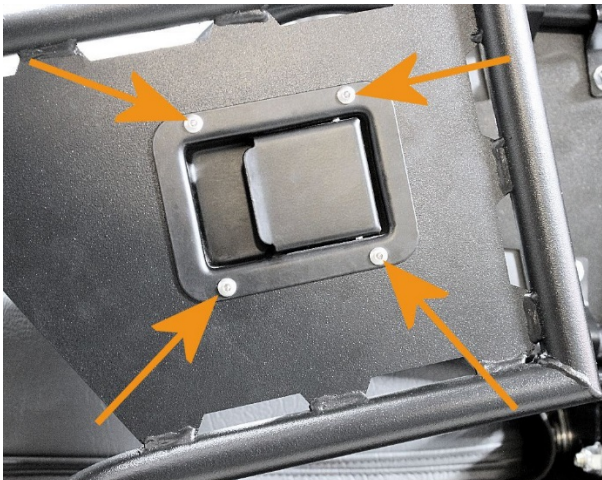
STEP 14



- Pull the door closed and adjust the center of the cut out with the Bracket.
- Adjustments can be made with both the Door Frame and the Hip Bracket.

Note: It is recommended that the door be fairly stiff opening and closing so that it is not likely to slip on the hinges.

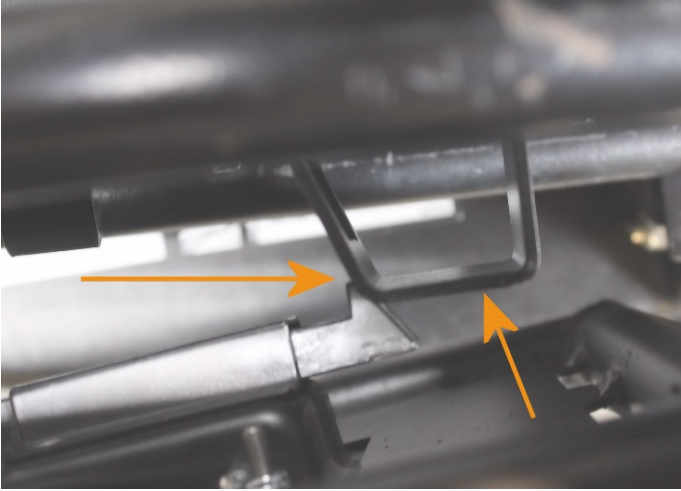
STEP 15



- Install the Paddle latch as shown by aligning the pre-drilled holes in the door panel with the corresponding holes in the latch and secure it using the provided 10-24 SS Button Head bolts and Nylock nuts.

INSTALLATION INSTRUCTIONS: Intimidator Half-Door

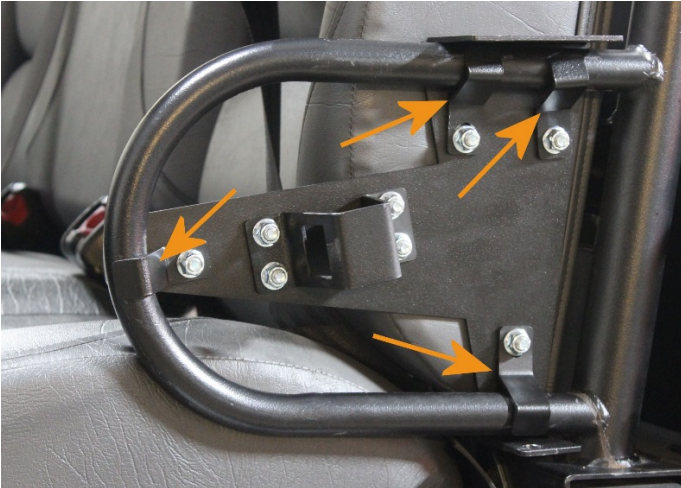
STEP 16



- Gently pull the door closed until the striker portion of the Paddle Latch touches the Striker Bracket.
- Adjust the Hip Bracket either forward or backwards until the Striker tip barely passes the edge of the Striker Bracket.
- Make adjustments until the door latches and opens properly.

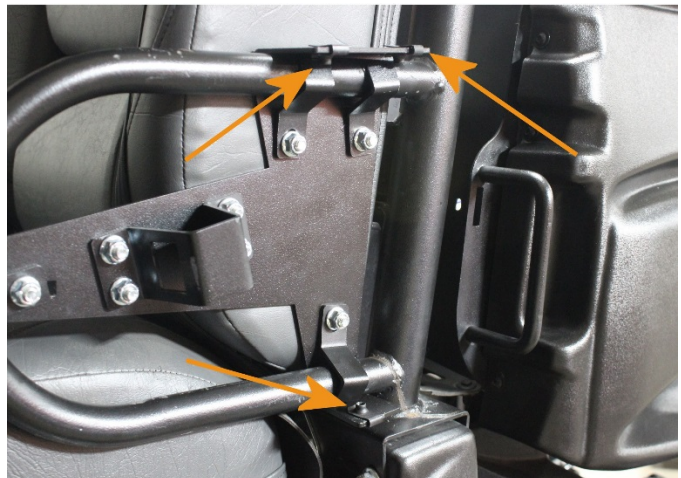
Note: This door is designed to close with considerable force as to relieve any rattling. In other words, you may have to slam it shut. **This view is looking down from the top of the door.**

STEP 17



- Once all adjustments are made, tighten the Hip Bracket Clamps.

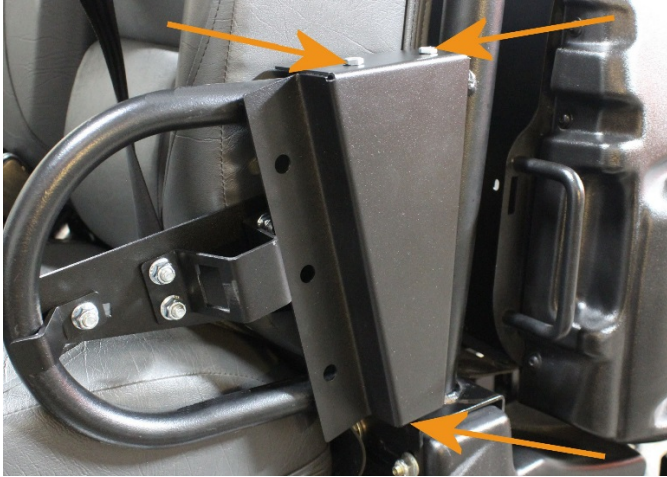
STEP 18



- Install the 1/4-20 "cage nuts" into the predrilled holes of the Hip Bracket.
- Make sure the flat side of the cage nut is to the outside of the Hip Bracket as shown here.

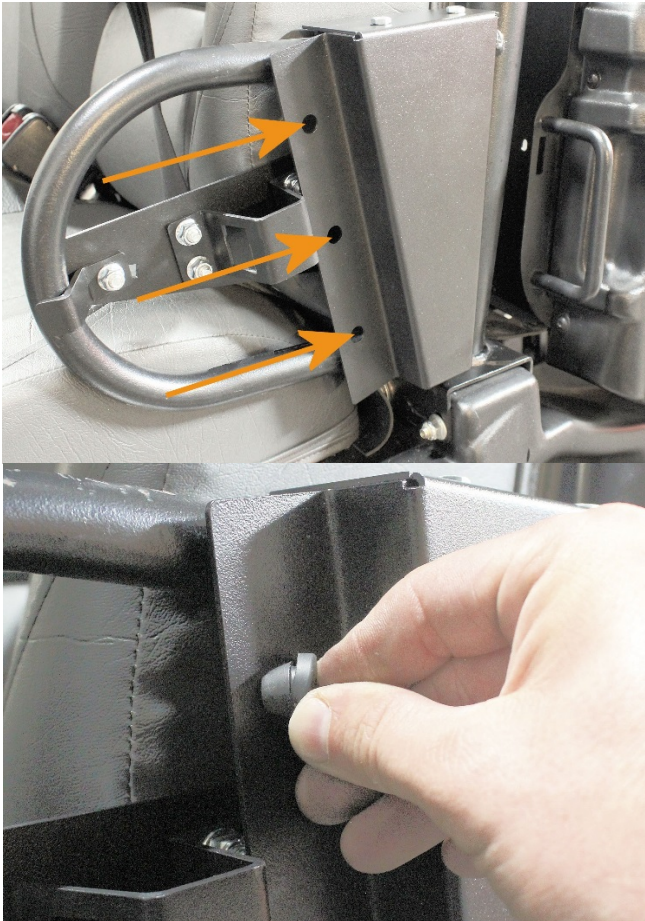
INSTALLATION INSTRUCTIONS: Intimidator Half-Door

STEP 19



- Place the Door Stop Cover plate over the Hip Bracket.
- With the door closed, adjust the cover plate to the same angle as the door.
- Secure the cover plate with the provided $\frac{1}{4}$ -20 x 1" hex head bolts.

STEP 20

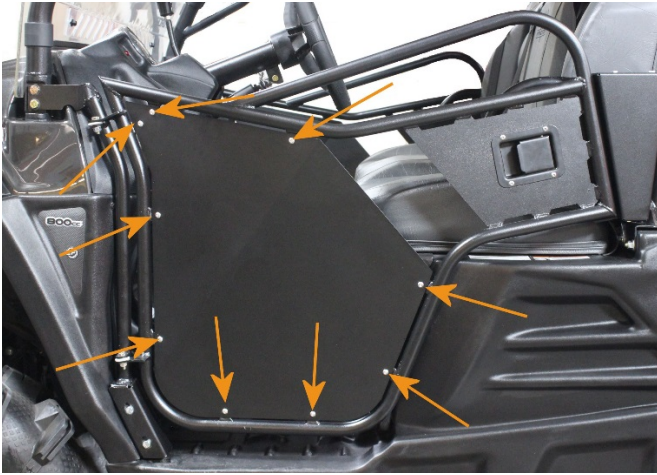


- Install the Bumper Stops to the cover plate
- Set the bumper in at a slight angle, push and twist at the same time until the bumper is seated.



INSTALLATION INSTRUCTIONS: Intimidator Half-Door

STEP 21



- Install the Door Panel using the provided 1/4-20 stainless steel button head bolts and Nylock nuts.