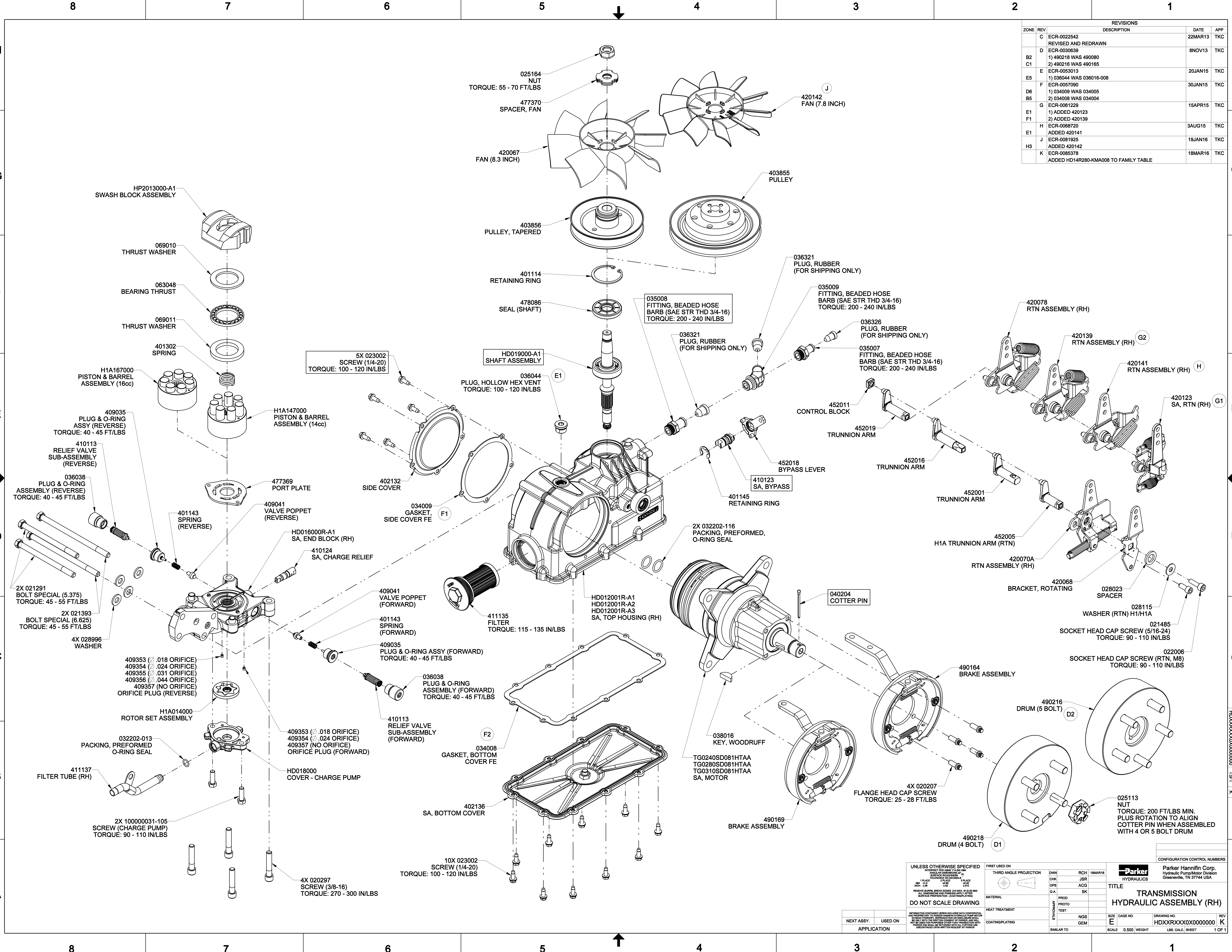


ZONE		REV		REVISIONS	DATE	APP
C	ECR-0022542			REVISED AND REDRAWN	22MAR13	TKC
B2	ECR-0030639			1) 490218 WAS 490080	8NOV13	TKC
C1				2) 490216 WAS 490165		
E	ECR-0053013			1) 036044 WAS 036016-008	20JAN15	TKC
E5	ECR-0057090			1) 034008 WAS 034005	30JAN15	TKC
D6				2) 034008 WAS 034004		
B5	ECR-0061229			1) ADDED 420123	15APR15	TKC
E1				2) ADDED 420139		
F1	ECR-0068720			ADDED 420141	3AUG15	TKC
E1	ECR-0081925			ADDED 420142	19JAN16	TKC
H3	ECR-0085378			ADDED HD14R280-KMA008 TO FAMILY TABLE	18MAR16	TKC



UNLESS OTHERWISE SPECIFIED		FIRST USED ON		Parker Hannifin Corp.	
MATERIAL		THIRD ANGLE PROJECTION		Hydraulic Pump/Motor Division	
HEAT TREATMENT		DWN RCH 18MAR16		Greenville, TN 37744 USA	
COATING/PLATING		CHK JSR		HYDRAULICS	
SIMILAR TO		OPB ACG		TITLE	
		G.A. SK		TRANSMISSION	
		MATERIAL		HYDRAULIC ASSEMBLY (RH)	
		PROD		SIZE	
		TEST		CAGE NO.	
		NGS		DRAWING NO.	
		GEM		HDXXRXXX0X000000	
		SCALE		REV	
		0.500		K	
		WEIGHT		1 OF 1	
		LBS. CALC.		SHEET	

DRAWING NO. HDXXRXXX0X000000 1 OF 1