



INSTALLATION INSTRUCTIONS: Front Tube Hitch Assembly 493-0041-KT

It is recommended that bolts remain "hand tight" until all bolts are installed.

Parts Included:



Tube Receiver



Hardware Kit



Left Side Brackets



Right Side Brackets



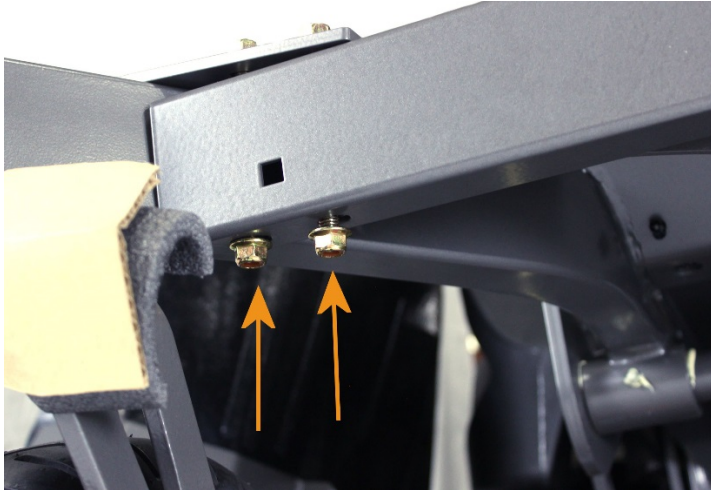
**INSTALLATION INSTRUCTIONS: Front Tube
Hitch Assembly 493-0041-KT**

STEP 1



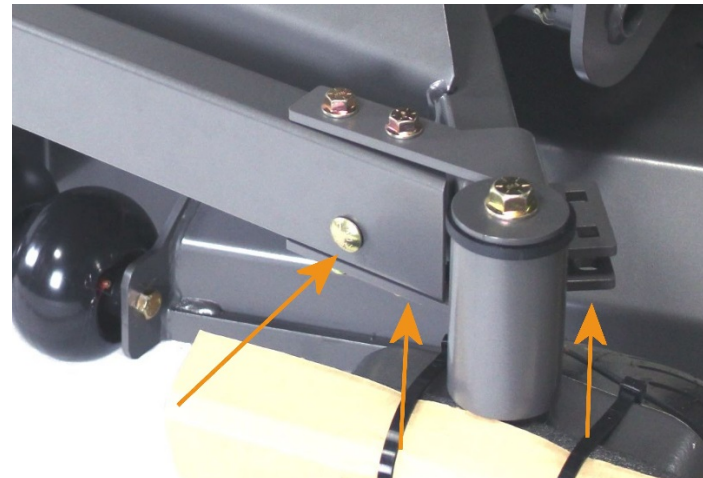
- Attach the two Top Brackets to the tube by inserting the provided bolts into the aligning holes of the brackets with the pre-drilled holes in the tube.

STEP 2



- Thread the nuts on the bolts enough to hold them in place and rest the tube on the mower frame as shown in the previous step.

STEP 3

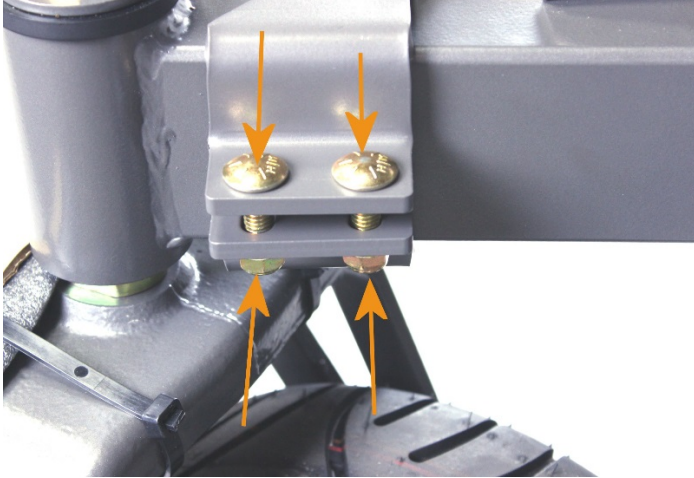


- One side at a time, remove the loose nuts.
- Set the bottom portion of the bracket in place.
- Align the matching holes and re-insert the bolts also adding the third bolt.



**INSTALLATION INSTRUCTIONS: Front Tube
Hitch Assembly 493-0041-KT**

STEP 4



- Align the matching holes of the top and bottom bracket and secure it with the provided bolts and nuts.

STEP 5

- Repeat steps 3 and 4 on the remaining side.

STEP 6



- Align the tube parallel with the front of the machine and tighten all the bolts.