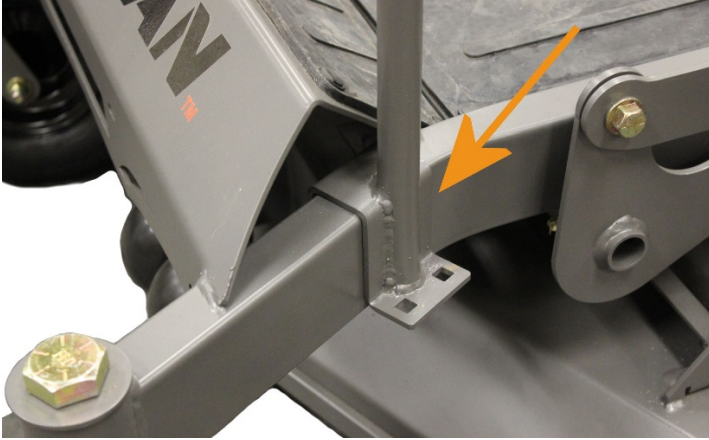




INSTALLATION INSTRUCTIONS: Assist Handle

It is recommended that bolts remain "hand tight" until all bolts are installed.

STEP 1



- Set the handle in place as shown here.

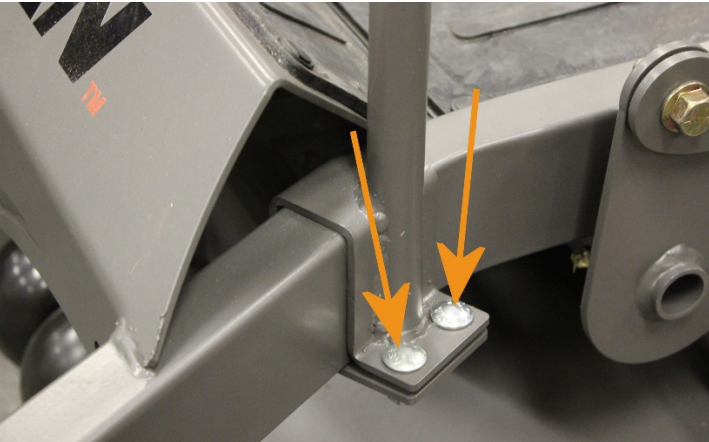
STEP 2



- On the back side of the bracket, set the other half of the bracket in place by sliding it into the slot.

NOTE: This **view** is looking up from underneath the front of the machine on the driver side.

STEP 3



- Align the corresponding holes of both pieces of the bracket and secure with the provided carriage bolts and Nylock nuts.