

ALEXANDER, CAROLYN

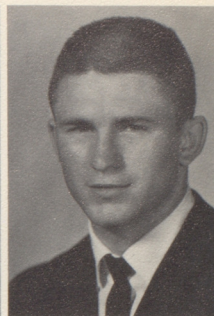
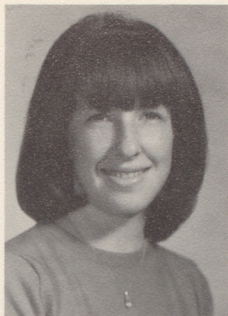
FTA 1; FBLA 2-4; Health Club 1,2; Pep Club 2.

ALLEN, ADELE

SCA 1-4, Sec. 3,4; Student Council 1; FBLA 2-4; FHA 3; 100 Math 1; 100 Spelling 2; Drill Team 4.

ALLEN, BOB

FTA 1-3; FBLA 4; Football 1-4; Captain 4; Baseball 1-4; Bomber News 4; Student Council 1; Track 1; Letterman Club 1-4.



BAKER, LARRY

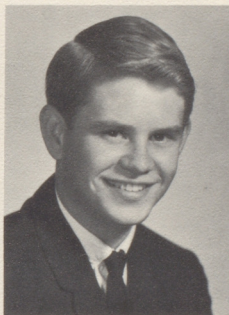
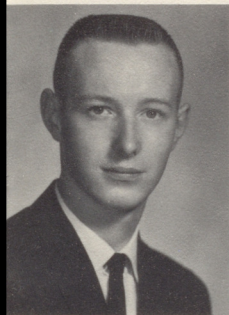
Health Club 1-3; FTA 2,3; Radio Club 2-4; FBLA 4; Jr. Firemen 3,4; Key Club 4; Science Club 1,2; 100 Math 1.

BANDY, SHIRLEY

FTA 1; FHA 1-4; Junior Degree 2, Chapter 3; Bomber News 4; Library Assistant 1-4.

BARKER, LARRY

FTA 3; Firemen 3,4; Bomber News 3,4; Radio Club 3,4; Band 1,2; FBLA 4; Student Health Club, 2,3.



BENTLEY, ALEX

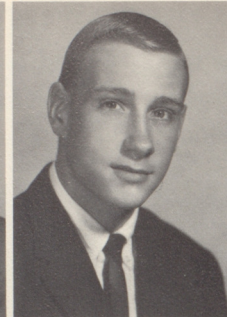
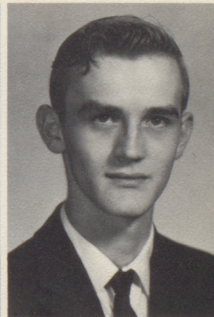
100 Math, 2,3.

BONNER, JAN

FHA 1; FBLA 2-4; Honor Roll 1-3; Student Council 4; Girl's State; Chairman Jr.-Sr. Banquet.

BRASENELL, TOM

FFA 3



BREWER, JEANIE

FHA 1-4; President 4, Junior Degree 4, Chapter 4; FBLA 3,4; SCA 3; Pep Club 1; Student Health Council 3; Tri-Hi-Y 2.

BRITT, CURTIS

FFA 1-3; Football 1.

BRUSS, LEE

Key Club, Treasurer 4; Jr. Firemen 4; Golf 1,4; Tennis 4; Track 1,2; Wrestling 1; Student Council 1; Honor Roll 3.

CHAPMAN, GEULA

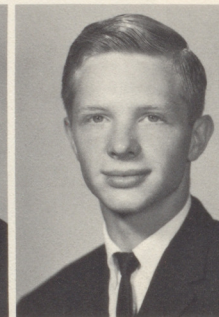
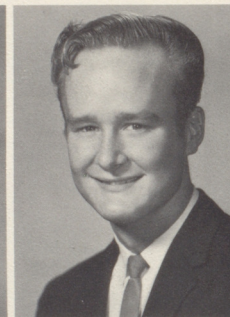
FHA 3,4; Sec. 4; SCA 3,4; Lunch-room Worker 1,2.

CHESNEY, EDWARD

Football 1,2; Track 1,2; Honor Roll 2-4.

COMFERT, JOHN

Bomber News 4; FBLA 4; FFA 2.



CORCORAN, MERRY LEE

Library Club 3,4; Band 1-4; FHA 1; Band Aids 4.

CRAWFORD, SHARON

Class Treas. 2; FBLA 2-4, Treas. 4; Band 1,2; Annual Royalty 1,2,4; SCA 3, Rep. Historian; Class Favorite 3; Annual Staff 4; Miss MHHS 3, Maid 2; FTA 1,2; Who's Who 3, Homecoming Maid 4; Jr. Play; Library 4; Bomber News 4; SHC 3; Drill Team Captain, 4.



DA COSSE, SUZANNE

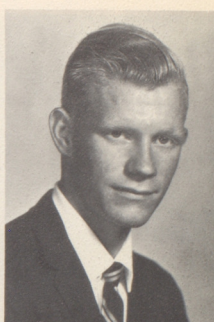
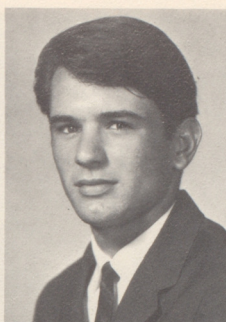
FTA 1-4; FBLA 2-4; Pep Club Pres. 2; SCA 1,3; Annual Staff 4; Student Health Council 3; Office Assistant 3,4; Honor Roll.

DEATON, RANDY

FFA 1,2; Lettermen 2-4; Football 1-4; Annual Royalty 2,4; Class Vice Pres. 2; FBLA 3, Vice Pres. 4; Jr. Firemen 4.

DOBBS, JOE

FFA 1-4; FBLA 2-4; Football 1; Track 1; Radio Club 2,3; Pep Club 2; FFA Shop Team 2.



DOUGLAS, GEORGE

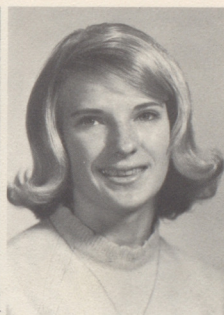
Jr. Firemen 1-4; FFA 1,2.

DUNBAR, SUE

FHA 2-4; SCA 4.

EIDSON, PAT

Band 1; FTA 1-4; FBLA 2; Student Council 2, Sec. 4; Cheerleader 2-4, Captain 4; Class Favorite 4; Homecoming Royalty 4; Girl's State; Elks Leadership Contest 4; Student Health Council 3; 100 Math 2.



ERWIN, LYNDIA

Band 1-4; Majorette 1-4; FTA 1-4; Annual Staff 4; FBLA 4; Jr. Class Play; Library Club 3,4; Who's Who, Best Dancer 3.

FAIR, JIMMY

FTA 1; Band 1; Radio Club 2-4; FBLA 3,4; Jr. Firemen 3,4; Key Club 3,4; Student Health Council 1,3.



FRIEDLEIN, CHARLES

Science Club 1-4; Radio Club 2-4, Vice Pres. 3; Jr. Academy 3,4, Sec. 4; Jr. Play; District Science Fair 3.

FUNK, PAT

Baseball 1-4; Science Club 1-3; Radio Club, Sec. 2; Lettermen's 1-4; Basketball 1; FFA 1; Bomber News 3-4; Managing Editor 4; District Science Fair 2.

GILLILAND, BECKY

FHA 1-2; FBLA 3-4; State Short-hand, 3; Scrapbook 4; Girl's State; Annual Staff 4.

GOODPASTURE, NANCY

FTA 1-2; Intramurals 1-3; Chorus 1-2; Librarian Aid 1; Pep Club 1-3; Acappella Choir 3; Stage Choir 3; Girl's Sextet 3; Prom Committee 3; FBLA 4.

GRANT, APRIL

FBLA 2-4; Committee Head 3; SCA 3; FTA 4.

GRAYHAM, CAROLYN

Home Economics 1,2; SCA 2,3; Bomber News.



GREEN, FAY

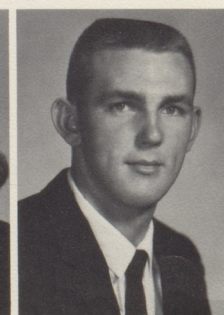
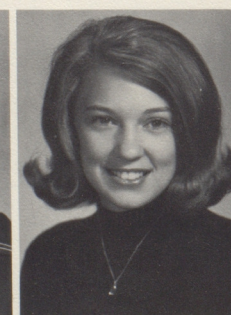
Student Council 1; Glee Club 1; FHA 1-4; Songleader 4; SCA 2-4; Reporter 4; Honor Roll 1.

HARGRAVE, ANITA

FTA 1-3; FBLA 2-4; Library Club 3-4; SCA 3; Annual Staff 3-4; Editor 4; 100 Math, 1-2; Student Health Council 3.

HARRIS, VERNIE

Basketball 1-4; All District 2; All State 1-3; FFA 1-3; FBLA 4; Lettermen 1-4; Bomber News 4.





HENSLEY, JACKEY

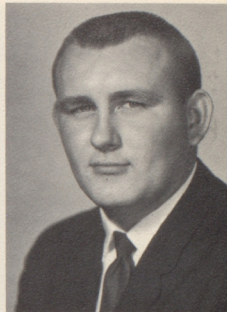


HENSON, VICKY



FHA 1; FTA 1; FBLA 3,4; Band 1-3; Cheerleader 4; Majorette 1-3.

HIGHTOWER, ROGER

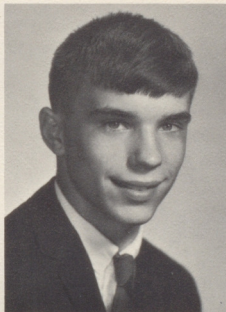


Science Club 1; Key Club 2,3; Radio Club 2; Jr. Firemen 2; Bomber News Editor 4.



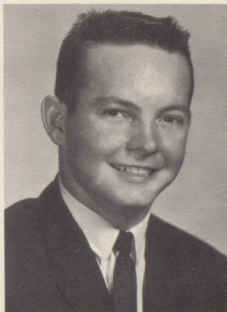
HIRSCH, GLENN

Science Club Pres. 1; French Club 1,2; Latin Club 1,2; FTA 3,4; Key Club 3,4; Class Vice Pres. 4; Basketball 1,2; Tennis 2,4; Student Council 1,2; Horace Mann Student 1; Class Play 3; Science Fair Winner 1,2; Literary Staff 2; Honor Roll 1-4.



HITCHCOCK, ALLEN

FTA 4; Key Club 4.



HODGES, GORDON

FFA 1-3; Honor Roll 1; FBLA 4; 100 Math 1-3; Radio Club 2,3; Jr. Firemen Reporter 4.

HODGE, JAMES

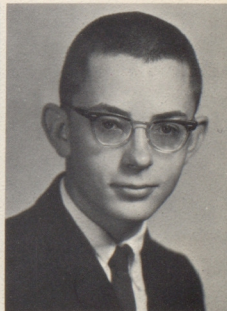
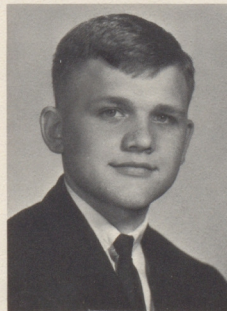
FFA 1; Science Club 2,3; FBLA 3; Lunchroom Worker 1-4.

HOLDEN, BECKY

FBLA; Bomber News Staff 4.

HOUSE, JOHN

Science Club 1-4; Jr. Academy of Science 3,4; Rocket Society 1, 2.



HYLER, LARRY

Choir 1,2; Acapella Choir



JACKSON, CAROLYN

FHA 1-2; FBLA 2-4; FBLA Spelling Team 3; Scrapbook 4; Annual Staff 4.



JARABEK, MILDRED

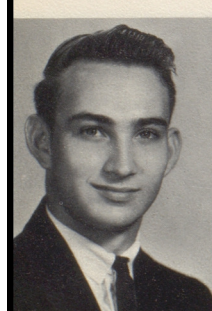
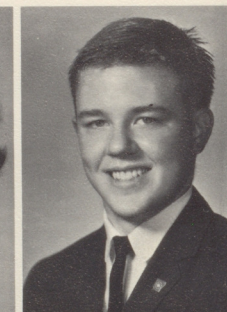
Home Ec. Club 1; GAA 1; Spanish Club 1; SCA 4; YFC 1; FHA 2,4; FTA 3-4, Reporter 4; Beta 3; Honor Roll 1-4.

JOHNSON, CLYDE ANN

FBLA 2-4; FTA 1; Band 1; SCA 1.

JOHNSON, JOHNNY

Science Club 1-4; Sec. 3; Jr. Academy of Science 2-4; Tres. 4; Student Council 4; Beta 2; Class Tres. 3; Honor Roll 1-2; Boy's State 3.



JONES, JAMES

FFA 1-4, Sentinal 2, Sec. 3, Pres. 4, Meat Judging Team 1, Livestock 2-4, Federation Vice Pres. 3; FBLA 2-3; Football 1-2.



JOYCE, MARY LYNN

FTA 1-4, Tres. 4; Band 1-4, Officer 3-4, All Region Band; Class Tres. 1; Class Sec. 2-4; Jr. Play; Girls' State 3; DAR Good Citizen.



JUENGER, JANET

FTA 1-4; Hist. 4; Science Club 1-4, Tres. 3, Pres. 4; Student Council 4; Jr. Play; 100 Math and Spelling 1-3; Honor Roll 1-4; Bomber News.



KEETER, DANNY

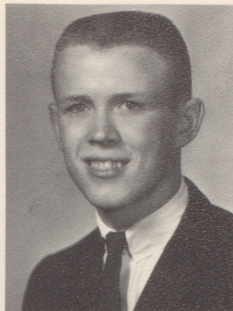
Basketball 1-4, All-District 3; Baseball 1-4; Lettermen's Club 2-4; FBLA 2-4, State Vice Pres. 4; FTA 2-4; SC 1-4; VP 3; Class Pres. 1, 3, 4; Class Favorite 2-4; Annual Royalty 2-3; Boy's State; Annual Staff 3-4; Who's Who 3; 100 Math Club 1, 3; Beta 1, 2; Honor Roll 1-4.

KENT, BARBARA

FTA 1-4; FBLA 2; Band 1-2; Jr. Play; SCA2; Student Health Council 3-4; Homecoming Queen 4; Annual Staff 3-4, Editor 4; Library Club 3-4.

KING, PAUL

Key Club 3-4; SC 4; FFA 1-3; FBLA 2; Football 1-2.



KIRBY, BEVERLY

FBLA 2-4; FTA 1, 4; SCA 3-4; Jr. Academy of Science 4; Library Club 1; Science Club 1.

KNIGHT, ALLEN

Lettermens Club; Basketball 1-4; Baseball 1-4; Football 1-4.



LEMON, LOWELL

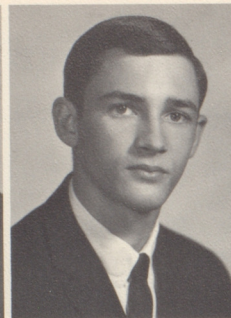
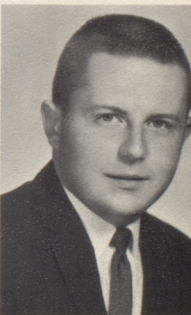
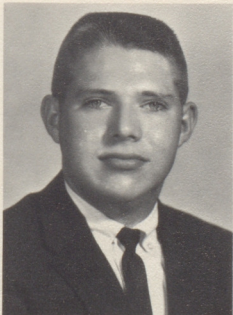
Band 1-3; Basketball 1; Track 1.

LEWIS, JUDY

FHA 1; Library Club 4; SCA 1-4, Vice Pres. 3, Pres. 4.

LINDSEY, GEORGE

Football 1; Boys' State; Science Club 3-4; Jr. Acad. of Science 3-4; Key Club 3-4; Band 1-4; All-District Band 2-4, All-State Band 3-4, Band Aids 3-4; Honor Roll 2-3.



LINDSEY, RONALD

Football 1-2; Baseball 1-4; Basketball 1; 100 Math 1-3; Honor Roll 3-4; FFA 2-4; Judging Meat Team 3-4; Jr. Play; Band 1-3; Key Club 3-4, Vice Pres. 4; Chapter Farmer 3; Lettermen 1-4.

LOVELADY, DONALD

Basketball 1-4; FFA 1; Baseball 1-4; Lettermen 1-4.

LANGDON, DONNA

FTA 3-4; Sec. 4; Honor Roll 3; Student Council 4; Jr. Play; Girls' State 3.

MARTIN, GAYLA

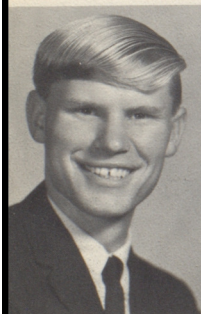
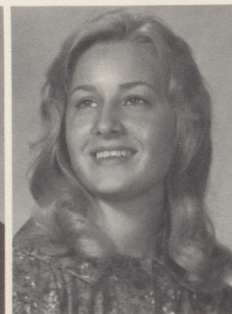
Band 1-4, Panel, Historian 4; Majorette 2-4; FHA 1; FTA 1-2; FBLA 2-4; Student Health Council 2-3; Library Club 2-4, Pres. 3-4; Annual Staff 4; Bomber News Staff 4, Business Manager.

MARTINEAU, KATHLEEN

GAA 2; Choir 1-2.

MCNEW, DANNY

Agri. 1-2; Key Club 4.



MCPHERSON, STEVE

FBLA 2.

METZGER, SANDI

FHA 1-3.

MILLER, MELINDA

FHA 1, 2, 4; SCA 4.



MINGE, ROGER

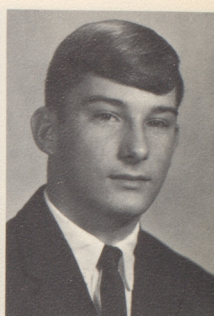
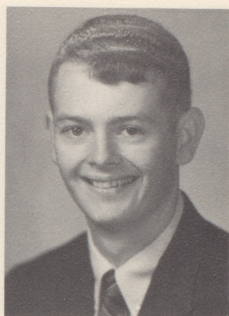
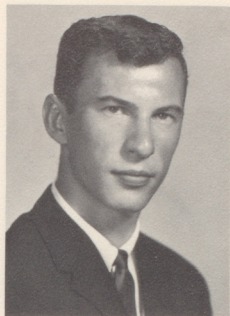
Football 1-2; 100 Math; Baseball 1; FFA 1,2,4; Key Club 4; Lettermen 1-2; FBLA 2.

MORRIS, CHARLES

Football 1,2,4; Key Club 2-4; FBLA 2-4; Lettermen's Club 1,2,4; FFA 1-2; Basketball 1; Fireman 4; Bomber News Staff 4.

MORCH, GEORGE

Football 1,2; Key Club 4; FBLA 2-3; FFA 1-2; Fireman's 4.



MURPHY, RANDY

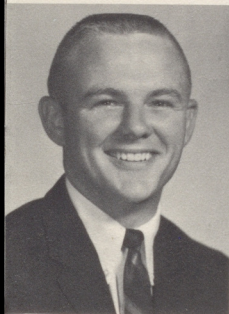
Band 1-4, Band Aids 1-4, All-Region Band 3; FTA 3-4; Basketball 1-4, All-BiCounty 1, All-District 1; Baseball 1-4; Letterman 1-4; Student Council 3-4; 100 Math 3; Track 1.

MARTIN, CONNIE

FHA 1-2; FTA 1; FBLA 3-4; Drill Team 4, Se. Tres.; Pep Club 2; Office Assistant 3; Bomber News 4; Cheerleader 1.

NEWTON, CHARLES

FFA 2-4.



OLSEN, KERRY

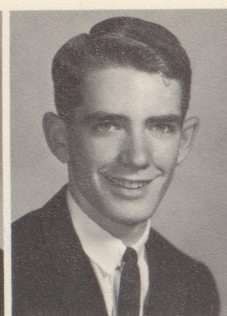
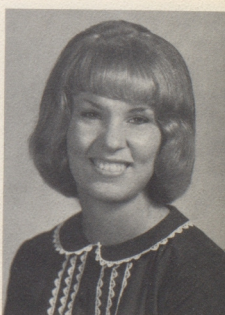
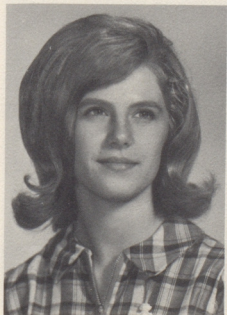
FTA 1-2; FBLA 3-4, Reporter 4; Student Health Council 3; Pep Club 2; Bomber News 3-4, Managing Editor 4; Annual Staff 4; Homecoming Royalty 4; Office Worker 3-4.

PARKS, BOB

Band 1-4, Co-Captain 4; Band Aids 4; Student Council 4; FTA 2-4; Student Health Council 1; Boys State; Jr. Play; 100 Math 1-3.

PARTEE, BONNIE

SCA 1-3; FHA 1-4.



PARTEE, LINDA

SCA 2; FHA 1,2; 100 Spelling 1,2.

PERRYMAN, RANDY

FTA 1; FFA 1; FBLA 3,4.

POWELL, LARRY

FTA 1-4; FBLA 2-4; Who's Who 3; FFA 2-4, Student Advisor 4; Annual Staff 4; Band 1-4; Band Aids 1-4; Student Health Council 1; 100 Math 3; Student Council.

RAMEY, AYN

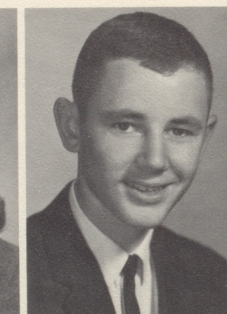
FTA 1-3; FHA 1; SCA 2; Radio Club 4; Science Club 2-4, Reporter 3, Sec. 4; Band 1-4; Band Aids 4; News Staff 3,4.

RASMUSSEN, CARYL

Class Tres. 1; Nat. Honor Society 2,3; Chorus 2,3; Dehtones 2; KAPA 2,3; Annual Staff 4; SC 2,4, VP 3; VP French Club 3; Pres. Jr. Classical League 2; Red Cross 1,2; Future Medical Society 2; FTA 3,4, Rep. 3; FBLA 4; Bomber News 4; Elks Leadership 4; Nat. Merit Semifinalist 4; Youth Leadership Delegate 3; Honor Roll 1-4.

RIPPLE, LARRY

FFA 3,4; Football Manager 4; Judging Teams 3,4.



ROADES, JEANNE

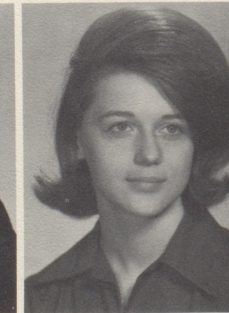
Science Club 1,2; Class Play 3; Beta 1-4; Rep. 3; Girls State; Band 2-4, Co-captain 3,4; Student Council 1-4; FTA 1-4, Asst. Historian 2, VP 3, Pres. 4; Elks Leadership 4; 100 Math and Spelling 1,2; Band Aids 2-4.

ROBERTS, CHARLENE

FHA 1-4; Treas. 4; Bomber News Staff 4; Exchange Editor 4; SCA 1,2,4.

ROBERTS, SUE

Band 1-4; Band Aids 3; Class Pres. 1, VP 3,4; FHA 1; Library 3; FBLA 4; Band Panel 4.





RUTHVEN, JANE

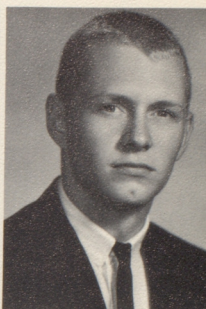
Student Council 1-4; Who's Who 3; FTA 1-4, Historian 3, VP 4; Band 1-4, Officer 3; FBLA 2; Annual Staff 3,4; Office 2; Band-Aids 2-4; Jr. Play; Bomber News Staff 4.

SANDERS, EVELYN

FTA 1,2,4; Library Club 1,2.

SANNER, ALLEN

Basketball 1-3; Football 1.



SCHELL, SHERRY

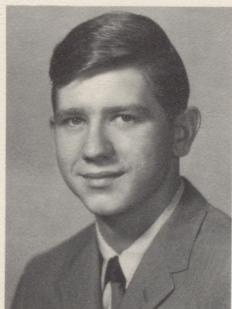
FHA 1-3; Pep Club 1,2; Mixed Chorus 1,2; Glee Club 1-3; Student Council Treas. 4; FBLA 2-4; Health Club 3; Office 4.

SHEID, RICHARD

Football 1,2; Track 1,2; Letterman 2; Jr. Firemen 3,4; FBLA 2-4; Key Club 3; Annual Staff 4; Student Council 4; FFA 1,3; Health Club 3.

SILZELL, NORMA

FBLA 2-4; FTA 1-3; SCA 2,3; FHA 1; Band 1-2; Honor Roll 2,3; Office 1-3; Library 4; Student Health Council 3.



SIMPSON, MARVELOI

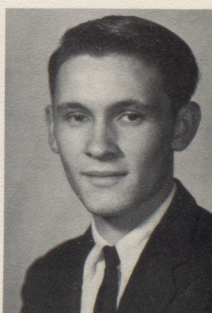
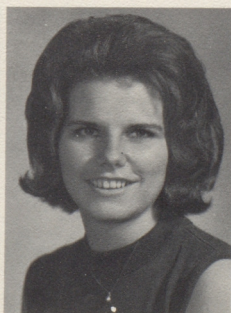
Band 1-2; FHA 1-4, Reporter 2; Federation Treas. 3; 100 Math 1-3; 100 Spelling 2; Honor Roll 1,3; Student Council 3,4; Library 4; SCA 1,3,4; Bomber News Staff 4.

SMITHSON, MARY

FHA 1.

SISNEY, EDWARD

FFA 1,3; Football 1.



SUMMERS, DANNY

Key Club 1; FFA 1-3.

THOMPSON, SUE

FHA 1,2; FTA 1,2; Science Club 4; Band 1-4; Band Aids 1,2.

TILLEY, INA

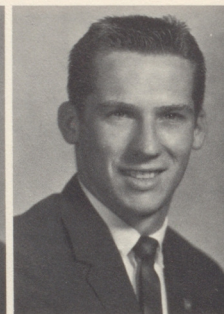
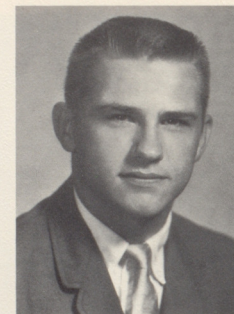
FHA 2,3; FBLA 4.

TRAMMELL, DAVID

FTA 2,3; FBLA 4; Jr. Firemen 3, Chief 4; Key Club 3, Pres. 4; Band 1-4; Band Aids 2-4; Football 1,3,4; Lettermen 1-4; Bomber News Staff 4.

TRAUTH, STANLEY

Student Council 1,2, Treas. 3, Pres. 4; FTA 1-4; Football 1-3, Co-captain 4; Basketball 1-4; Baseball 1-4; Lettermen 1-4; Honor Roll 1-4; Science Club 1,2; Boys' State; Elks Leadership 4; 100 Math and Spelling 1,2.



TURNBO, PAMELA

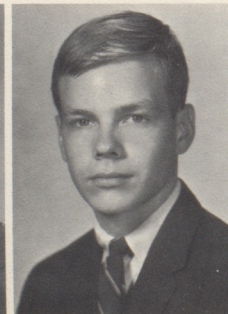
Honor Roll 1,4; 100 Math Club and Spelling 1; FBLA 2-4, Historian 3; Sec. 4; SCA 1,2; Science 1; FTA 1,2; FHA VP 4; SHC 3; Bomber News Staff 4; Office 3,4; Annual Staff 4.

VANDERSTEK, JESS

Football 1,2; Tennis 4; Basketball 1; Letterman 1,2; Jr. Fireman 4; FFA 1; FBLA 2-4; Key Club 3, Sec. 4.

VAUGHN, LINDA

SCA 1-3; FHA 1; Pep Club 1; Library Club 4.





WALKER, DWAYNE

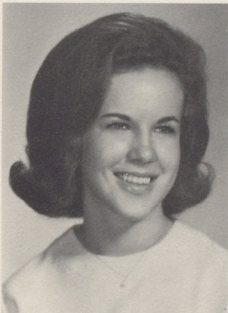
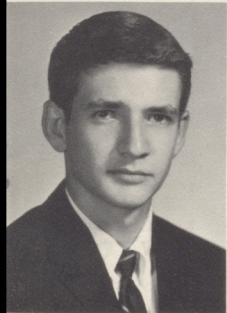
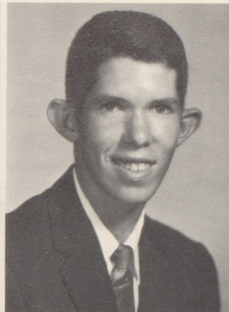
FFA 1-3; Science 1; Bomber News Staff Business Manager 3, Editor 4; Track 4; Baseball 1-4.

WATSON, EDDIE

FFA 1-3.

WEAVER, RUTH ANN

SCA 1-3; YFC VP 4; Pep Club 1 Library 4; FHA 1,2.



WEDGEWORTH, TERRY

WHEELER, CAROL JO

FTA 1-4; Library Club 3,4; FBLA 2-4; SCA 1,2; Student Health Council 3; Homecoming Royalty 4; Annual Staff 3, Business Manager 4.

WHITAKER, KATHERINE

FHA 2,4; SCA 4; Pep Club 2.

WILLETT, BILL

Class Pres. 2; FBLA 3,4; Football 2-4; Baseball 2-4; Letterman 2,3, Pres. 4; FFA 2-4.

FOUTS, PENNE

FBLA 2-4; Spelling Team 3, Scrapbook 4.

