

SENIORS



Senior class officers are, from left to right: DON DEMPSEY, Sponsor; TOMMY FOWLER, Treasurer; DAVID JOHNSON, Vice President; DON BREYTSPRAAK, President; CONNIE EDWARDS, Secretary; MRS. DOLPH ELAM, Sponsor.

ACTIVITIES



Brain at work!

Washer - Woman!

Working!

Pro. & Con.

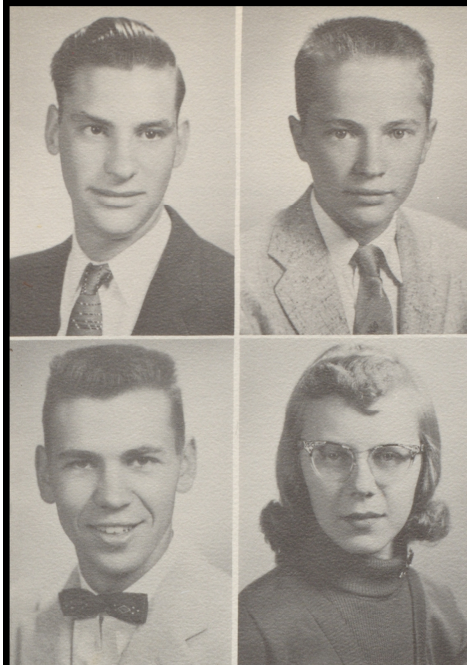
Showin' 'em How!

Patelite!

Mad, Dad!

The Mrs. Snow.

Tigers!!!!



DON ALEXANDER
FFA 1, 2, 3, 4

MICHAEL BACHERL
FFA 1, 2, 3, 4; Band 1

RAYMOND BECK
Baseball 1, 2, 3, 4; Football 1, 2, 3, 4; Basketball 1; FFA 1, 2, 3, 4; Officer 4; Lettermen's Club 3, 4; History Club 1; All-District 4.

MARGARET BRETZ CASEBOLT
Class Secretary 1; Band 2; Majorette 2; History Club 3; Student Health Council 3; Around the World Club 4; FBLA 4.

DON BREYTSPRAAK
Student Council President 3; Vice President 4; Football 2, 3, 4; Honorable Mention All-State 4; All-District 4; Basketball 2, 3; Junior Fireman 2; Record Club 2; Track 1; Lettermen's Club 2, 3, 4; Band 2, 3, 4; Leadership Award 3; Junior Play; Operetta 2, 4; Annual Staff 4; Bomber News Staff 4; Beta Club 3, 4.

GLEN BRNIC
Football 3; Bomber News Staff 4.

HELEN MARIE BRUNSON
FHA 1; History Club 2, 3; Dramatics Club 3; Library Club 3; FBLA 4; Rainbow 1, 2, 3, 4; Worthy Advisor 4; Veteran's Secretary 4; Career 1.

LINDA BURNS
Band 2, 3, 4; FBLA 3, 4; Historian 4; Dramatics Club 1; Bomber News Staff 4.



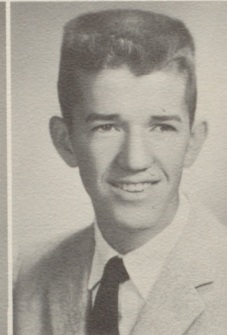


EVA BUTTERFIELD
Careers Club 1; History Club 2; Dramatics Club 3;
Around the World Club 4; High School Chorus 2, 3, 4;
Pep Club 1; Bomber News Staff 4.

SAUNDRA CARTER
FTA 4; Reporter 4; Annual Staff 3, 4; Assistant Editor
3; Class Editor 4; Bomber News Staff 3, 4; Co-Editor
4; Journalism Award 3; Quill and Scroll Award 3; Beta
Club 1, 2, 3, 4; Reporter 3; Band 1, 2, 3, 4; Student Council
Treasurer 3; Girls' State; Junior Play; Careers
Club 2; Secretary 2; FHA 1; Pep Club 1.

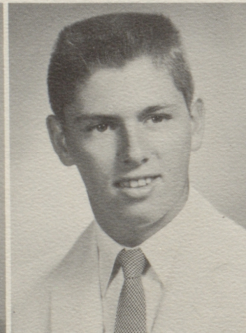
DEANNA CHOATE
FHA 1, 2, 3, 4; Treasurer 3; Vice President 4; FBLA
3, 4; Secretary 4; Dramatics Club 3; Around the World
Club 4; Girls' State; Homecoming Maid 3, 4; Glee Club
2; Class Secretary 1; Bomber News Staff 4; Teacher
Assistant 4; Music Club 2.

BOBBY CRAWFORD
FFA 2, 3, 4; Treasurer 3, 4; Federation Reporter 3;
History Club 1.



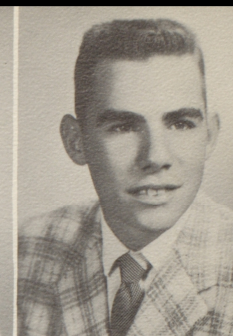
FERN DEATHERAGE
FHA 1, 2, 3; Reporter 3; Nurses Club 1; Careers Club
1; Piano 1, 2, 3; FBLA 4; History Club 4; Glee Club 2.

JIMMY DEVLIN
Student Council 4; Football 1, 2, 3, 4; All-District 4;
Honorable Mention All-State 4; Basketball 1, 3, 4; Base-
ball 1, 2, 3, 4; Lettermen's Club 1, 2, 3, 4; Junior Fire-
men 1, 2; Bomber News Staff 4; Theater Club 1; Dra-
matics Club 1.



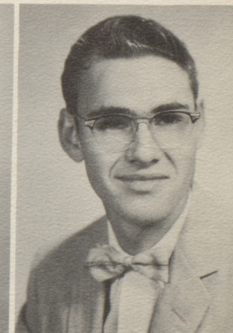
SHIRLEY GILLILAND
History Club 1, 2; Dramatics 1; Pep Club 1.

JERRY GRAYHAM
FFA 1, 2, 3, 4.



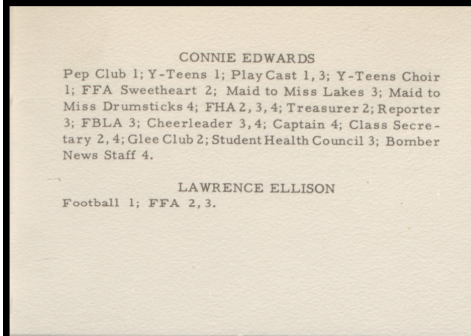
EDITH JANE FARRIS
Music Club 1; Pep Club 1, 2, 4; Around the World Club 4.

TOMMY FOWLER
KTLO Backfield Award 4; Outstanding Back District
1-A 4; Football 1, 2, 3, 4; Honorable Mention All-District
3; All-District 4; All-State 4; Basketball 1, 2, 3, 4; All-
County 3; Baseball 4; Dramatics 1; Junior Fireman
1, 2, 3; Lettermen's Club 1, 2, 3, 4; Band 1, 2, 3, 4; Band
Leadership Award 3; Bomber News Staff 4; Class
President 1, 2; Class Treasurer 4; Boys' State; Junior
Play.



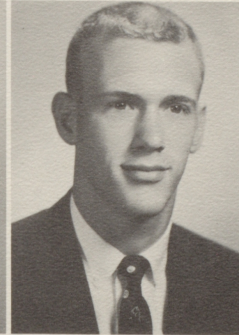
WAYNE GREENWOOD
Around the World Club 4; History Club 1, 2, 3; FBLA
3, 4; Dramatics Club 1; Band 1, 2, 3.

JOHNNY HARRIS
Football 4; Junior Fireman 3; FBLA 3, 4; Journalism 4.



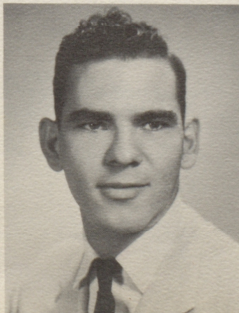
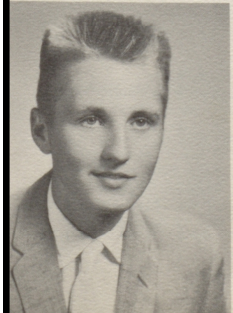
CONNIE EDWARDS
Pep Club 1; Y-Teens 1; PlayCast 1, 3; Y-Teens Choir
1; FFA Sweetheart 2; Maid to Miss Lakes 3; Maid to
Miss Drumsticks 4; FHA 2, 3, 4; Treasurer 2; Reporter
3; FBLA 3; Cheerleader 3, 4; Captain 4; Class Secre-
tary 2, 4; Glee Club 2; Student Health Council 3; Bomber
News Staff 4.

LAWRENCE ELLISON
Football 1; FFA 2, 3.



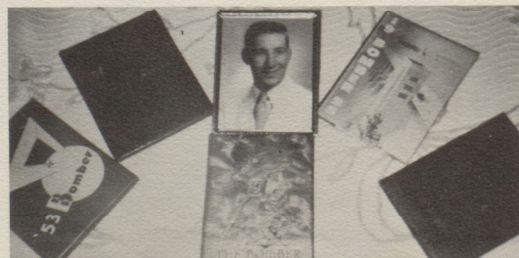
SHIRLEY GILLILAND
History Club 1, 2; Dramatics 1; Pep Club 1.

JERRY GRAYHAM
FFA 1, 2, 3, 4.



WAYNE GREENWOOD
Around the World Club 4; History Club 1, 2, 3; FBLA
3, 4; Dramatics Club 1; Band 1, 2, 3.

JOHNNY HARRIS
Football 4; Junior Fireman 3; FBLA 3, 4; Journalism 4.



It's in the Book!

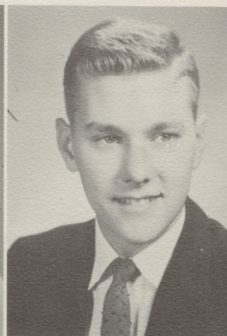


JOHN HARTRICK
Band 1, 2; Dramatics Club 1; Junior Fireman 2; Beta Club 3, 4; Annual Staff 4; Business Manager 4; Bomber News Staff 4; History Award 3; FFA 1.

JO ANN HUETT
Pep Club 1, 4; History Club 2; Around the World Club 4; Music Club 1.

PATSY HUETT
Glee Club 1; Pep Club 1; Record Club 2; Band 1, 2; History Club 2, 3; Around the World Club 4; FBLA 3, 4; Treasurer 4; Office Assistant 4.

DAVID JOHNSON
Junior Fireman 1, 2; Annual Staff 3, 4; Band 1, 2, 3; FBLA 3, 4; Vice President 4; Class Vice President 4; Football 3; Baseball 2; Beta Club 1; Student Health Council 3; Boys' State.



Which is Which?



M-M-M Good!

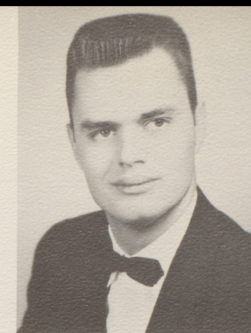


HARVEY JOHNSON
Junior Fireman 1, 2; Band 1, 2, 3; FBLA 3, 4; Baseball 2; Beta Club 1.

PAT JOHNSON
FTA 4; President 4; Annual Staff 3, 4; Business Manager 3; Co-Editor 4; Bomber News Staff 4; Feature Editor 4; Beta Club 1, 2, 3, 4; Band 1, 2, 4; Student Council 4; Treasurer 4; Girls' State; Junior Play; Careers Club 1; Glee Club 2; FHA 2; Pep Club 1; Class Treasurer 3; Who's Who 3, 4; Cheerleader 4; Debate Team 4; Band-Aides 4.

GENE JONES
Football 3, 4; All-District 4; Baseball 3, 4; Lettermen's Club 3, 4; Operetta 2, 4; Band 1, 2, 3, 4; Best Musician 3; Junior Play; FBLA 3, 4; State Vice President 4; Second Place Mr. Executive Contest 3; Junior Fireman 3; Bomber News Staff 4; Annual Staff 4.

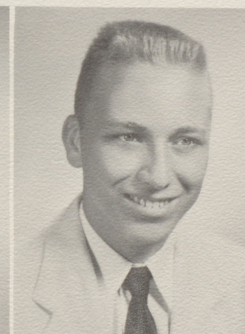
JOYCE KASINGER
History Club 1; FHA 1; Dramatics Club 1.



Should I, or Shouldn't I!



No Comment!



DAN KING
FFA 1, 2, 3, 4; Band 1, 2, 4.
KARL KOCH
History Club 1, 2, 3.

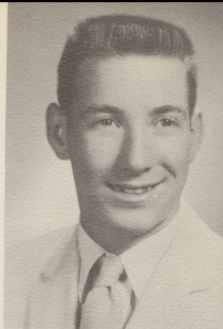
JANICE McCracken
FHA President 4; Second Vice President 3; Homecoming Maid 1, 4; Student Council Representative 1, 2, 4; Class Vice President 2, 3; Rainbow Worthy Assistant Advisor 4; Pep Club 1; FBLA 3; Bomber News Staff 4.

CORA MESSICK
FHA 1, 2, 3; Historian 2; FBLA 3; Annual Staff 3, 4; Business Manager 3; Co-Editor 4; Basketball 2; Class Secretary 3; Rainbow 1; Home Economics Award 2.



CLIFFORD MORRIS

History Club 1, 2, 3; President 3; Vice President 2; Around the World Club 4; President 4; Dramatics Club 1; Travel Club 1; Basketball 1; Cheerleader 2; Student Council Representative 2; FBLA 3, 4; Scrapbook Photographer 4; Bomber News Staff 4.



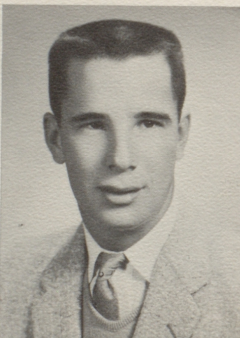
BETTY NYSTROM

Cheerleader 1, 2, 3, 4; Class Treasurer 2; Baxter County Queen 4; Maid 3; Campus Maid 4; Miss City Park; Beta Club 1, 2, 3, 4; Annual Staff 4; Homecoming Maid 1, 2; Math Award 2; Student Council 3; Bomber News Staff, Business Manager 4; Cheerleading Capt. 4, Co-Capt. 3; Junior Play.



PATSY OHM

FBLA 3, 4; Dramatics Club 3; Bomber News Staff 4.

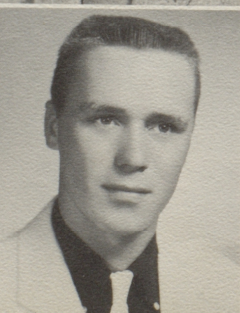


LEONARD PARTEE

FFA 1, 2, 3, 4; FBLA 4.

TERRY POYNTER

Football 1, 3, 4; All-District 4; Baseball 2, 3, 4; Lettermen's Club 1, 2, 3, 4; Junior Play 3; Student Council President 4; President AHSPA 4; Bomber News Editor 4; Junior Fireman 2.



LORENE RAYMOND

FHA 1; Pep Club 1; Dramatics 1.

DEAN RICKE

Football 1, 3, 4; Honorable Mention All-State 4; All-District 4; Class President 3; Class Vice President 2; FFA 1, 2, 3, 4; Baseball 1, 2, 3, 4; KTLO Lineman Award 4; Lettermen's Club 1, 2, 3, 4; FFA Livestock Judging Team 3; National Guard Corporal 3, 4.



KENNETH SKIVER

FFA 1, 2, 3, 4.

LINDA SKIVER

FHA 1, 2, 3, 4; Librarian 3, 4; Pep Club 1, 4; Classical Music Club 1; Bomber News Staff 4.



NONA MAE SIMPSON

FHA 1; History Club 2, 3; Librarian 1, 2, 3; Vice President.

CHRISTINE STOVALL

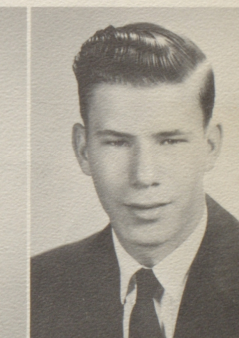
Annual Staff 3, 4; Beta Club Secretary 4; Beta Club 1, 2, 3, 4; Bomber News Staff 4; FBLA 3; Basketball 1, 2.

BONNIE TANCRE

Spelling Club 1; Girls' Chorus 1; Conversational Spanish Club 2; A Cappella Choir 2; Beta Club 3, 4; Junior Play; Choral Award 3; Girls' Chorus 3; FHA 4; Hit Parade Club 4; Bomber News Staff 4; Exchange Editor 4.

ROBERT THOMAS

History Club 1, 2, 3; Around the World Club 4; Bomber News Staff 4.



HAROLD THORNE

Football 1; FFA 1, 2, 3, 4; Sentinel 3, 4; Bus Driver 3, 4.

JOYCE TREAT

FHA 1, 2; 4-H 2; Librarian 1; Music Club 1; Record Club 1; Dramatics 1; Pep Club 1.





Oh, Boy!



I'm Sitting on Top of the World!

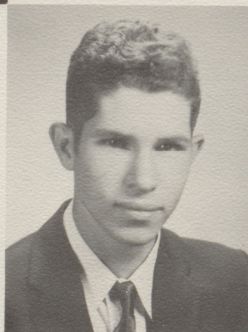


GLEN VAN RHEEDEN
Stamp Club 1,2; FFA 2,3; Football Manager 4.

MARY LOU WALKER
Pep Club 1; History Club 2,3; Around the World Club
4; Music Club 1.

ELDON WATSON
FFA 1,2,3,4; Bus Driver 3,4.

BETTY LOU WICKER
History Club 2,3; Around the World Club 4; Music
Club 1.



ROBERT WISE
Basketball 1; Beta Club 1,2,3,4; Vice President 1;
Student Council Representative 3; Bomber News Staff
4; Band 1,2,3; Combo 3.

SANDY WOLFRAM
FBLA 2,3,4; Band 2,3,4; Historian 4; Career Club 1;
Dramatics Club 1; Nurses Club 2; Bomber News Staff 4.