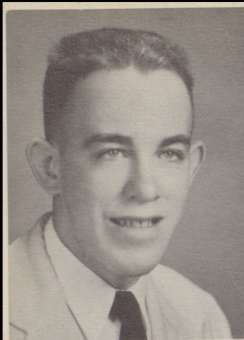


## SENIORS



**SAMUEL ACHESON**  
Chemistry Club 3; Pep Club 2, 3; History Club 3, 4; Basketball 1, 2, 3, 4; Scorekeeper 4; Football Manager 4.



**BETTY JEAN ALLEN**  
FBLA Club 4; 2nd Vice President 4; Pep Club 3; History Club 3; FHA 1, 2, 3, 4; 3rd Vice President 2; 1st Vice President 4; Office Assistant 4.



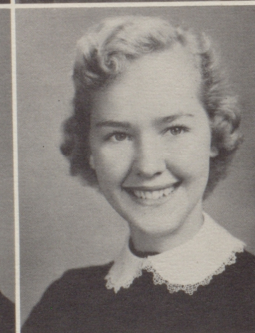
**PEGGY ALLEY**  
FBLA Reporter 4; Music Club 3, 4; Pep Club 1, 2, 3; History Club 3; Dramatics Club 3; FHA 1, 2; Bomber News Staff 4; Annual Staff 4; Office Assistant 4; Glee Club 2; Band 1, 2, 3, 4; Homecoming Maid 4; Orchestra 3, 4.



**CAROL ANDERSON**  
Music Club 4; Pep Club 1, 2, 3; Dramatics Club 4; Librarian 4; Library Club 4; Y-Teens 1, 2, 3; GAA 1, 2, 3; Intramural Basketball 1, 2, 3.



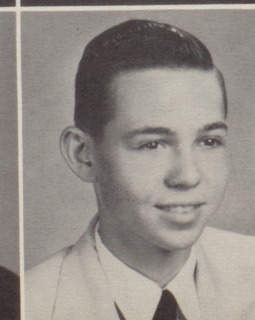
**MARY LOU ATHERLY**  
Music Club 4; Pep Club 1, 2, 3; Dramatics Club 4; Bomber News Staff 4; Annual Staff 3, 4; Piano 4; All-State Band 3; Sextet 3, 4; Glee Club 1, 2, 4; Cheerleader 1, 3; Band 1, 2, 3, 4; Orchestra 1, 2, 3, 4; Homecoming Maid 3; Annual Queen 4.



**PHYLLIS BACHERL**  
FBLA 4; Music Club 4; Pep Club 3; Letterman's Club 3, 4; Secretary-Treasurer 4; FHA 1, 2, 3; Bomber News Staff 3, 4; Piano 1; Glee Club 3, 4; Cheerleader 1, 2, 3, 4; Basketball 2, 3; All-District 3; Homecoming Maid 4; Baxter County Queen 3; Miss Mountain Home Maid 3.



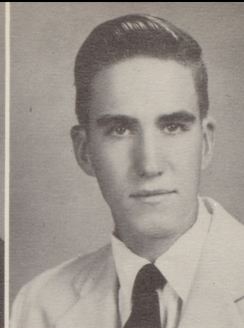
**SHIRLEY BAYLESS**  
Beta Club 4; FBLA Vice President 4; Office Assistant 2, 3, 4; Junior Play 3; Basketball 1, 2.



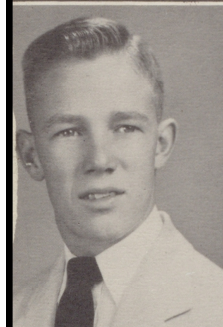
**SAMMY BECK**  
Music Club 3; FFA 3, 4; Treasurer 4; Glee Club 2; Chemistry Club 3; 4-H Club 1, 2, 3, 4.



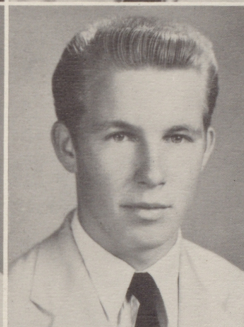
**BETTY BLAKE**  
FBLA 4; Pep Club 1, 2, 3; History Club 3; Dramatics Club 1, 3, 4; FHA 4; Office Assistant 4; Glee Club 1, 2; Basketball 2, 3, 4.



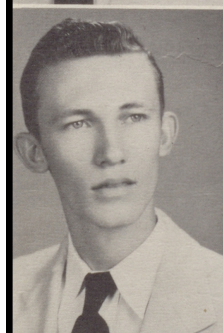
**LEONARD BOLDING**  
History Club 4.



**CURTIS BROOKS**  
Music Club 3; FFA 1, 2, 3, 4; Sentinel 1, 2, 3, 4; Career Club 3.



**LEO BRYNIARSKI**  
History Club 3; Letterman's Club 4; FFA 1, 3; Football 4.



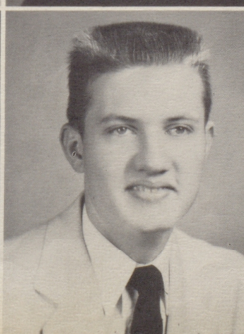
**WILLIAM CASEBOLT**  
Band 1, 2, 3, 4; Basketball 1, 2, 3, 4.



**MARY COWART**  
Beta Club Secretary 3, 4; Music Club 3; Pep Club 1, 2, 3; History Club 3; Letterman's Club 2, 3, 4; Dramatics Club 1, 3; Secretary 1; Student Council Secretary 4; Class Secretary 3; Class Reporter 1, 2; FHA 1, 2; Historian 1; Songleader 2; Bomber News Editor 4; Triple Trio 2; Sextet 3, 4; Glee Club 1, 2, 3, 4; Basketball 1, 2, 3, 4; Girl's State 3; Homecoming Queen 4.

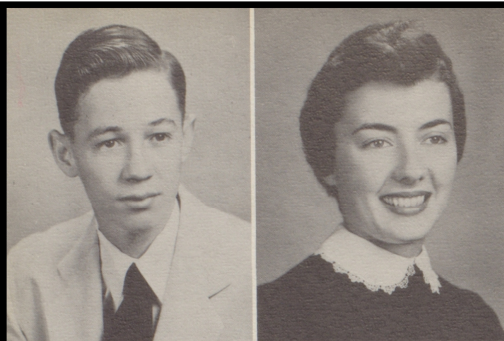


**VELARA CROWNOVER**  
Music Club 3; Pep Club 1, 2, 3; Treasurer 3; History Club 3, 4; Dramatics Club 2, 3, 4; FHA 1, 2, 3; 2nd Vice president 3; Bomber News Staff 4; Glee Club 1, 2; Librarian 3, 4; Basketball 2; President Library Club 4; 4-H Club 1, 2, 3, 4.



**ROBERT DAHLKE**  
Letterman's Club 3, 4; Class President 2; Class Treasurer 1; FFA 2, 3, 4; Vice President 3; Junior Play 3; Baseball 3; Basketball 1, 2, 3; State Livestock Judging 2; National Gold Emblem Team 3; Bus Driver 4.





**JUNIOR DEATHERAGE**  
FFA 1, 2, 3; Reporter 3; FFA District Contests 1, 2, 3; FFA State Contest 3; Parliamentary Procedure Contest 2; Junior Play 3.



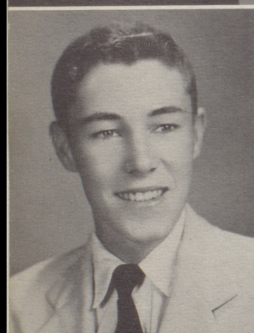
**CYNTHIA DEW**  
Music Club 3, 4; Pep Club 1, 2, 3; History Club 3; Dramatics Club 3, 4; Student Council Representative 1; FHA 1, 2; Secretary 2; Bomber News Staff 3, 4; Office Assistant 3; Glee Club 1, 2; Band 1, 2, 3, 4; Basketball 2; Orchestra 3; Homecoming Maid 2; Mountain Home Miss Hospitality 4; Maid to State Miss Hospitality 4; Miss Mountain Home Maid 3; Student Health Council 4; Who's Who Contest 2, 3



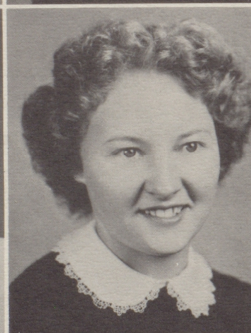
**JOAN DURNELL**  
FBLA 4; Pep Club 1, 2, 3; History Club 3; Dramatics Club 1, 3, 4; FHA 1, 2, 3, 4; Bomber News Staff 4; Glee Club 1, 2; Band 1, 2, 3, 4; Orchestra 3; State 4-H Club Health Winner 3; Delegate to National 4-H Club Congress in Chicago 3; Charter Member Purple Circle Club 2.



**IMOGENE FOUT**  
FBLA 4; Pep Club 1, 2, 3; History Club 3; Dramatics Club 1, 3, 4; FHA 1, 2, 3, 4; 2nd Vice President 3; Office Assistant 4; Glee Club 1, 2; Band 1, 2, 3; Basketball 3, 4.



**TOMMY GILLETTE**  
FFA 1, 2, 3, 4; President of Youth Group 2; Bomber News Staff 4; Glee Club 2; Football 2; Chemistry Club 3.



**BARBARA GILLILAND**  
Music Club 3; Pep Club 3; History Club 3, 4; 4-H Club 1.



**SHIRLEY GREATHOUSE**  
FBLA 4; Pep Club 2, 3; History Club 3; Letterman's Club 4; Dramatics Club 3; FHA 1, 2, 3, 4; Parliamentary 4; Basketball 2, 3, 4; Baxter County Maid 2.



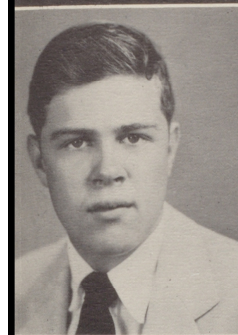
**SHIRLEY GREENWOOD**  
FBLA Secretary 4; Pep Club 3; History Club 3; FHA 1, 2, 3, 4; Historian 4; Office Assistant 4.



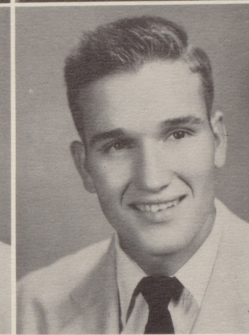
**SUE HACKLER**  
Music Club 4; Pep Club 1, 2, 3; History Club 3; Dramatics Club 3; FHA 1, 2; Bomber News Editor 3; Piano 1, 2; Junior Play 3; All-State Band 2, 3; Glee Club 1, 2; Band 1, 2, 3, 4; Basketball 3; Orchestra 1, 2, 3, 4; Baxter County Princess 2; Baxter County Maid 1; NFSM 1, 2; Batesville District Music Contest 3; Triple Trio 2; Miss Mtn. Home 3; Maid Miss White River 3; Student Health Council 4.



**MARTHA HARRIS**  
Music Club 3; Pep Club 2; History Club 4; Glee Club 2, 3; Librarian 4; Library Club Secretary 4; GAA 1; Softball 3.



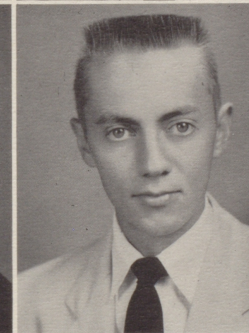
**BOB HARRISON**  
Music Club 3; History Club 3, 4; Chemistry Club 3.



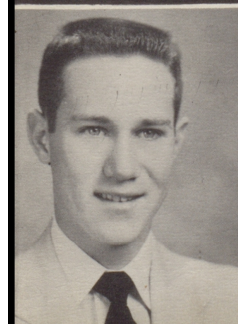
**JIMMY HEENAN**  
Junior Firemen 3, 4; Letterman's Club 2, 3, 4; Basketball 1, 2, 3, 4; All County 1; All Mountain Home Invitational Tournament 3; Football 2, 3, 4; All-District 4.



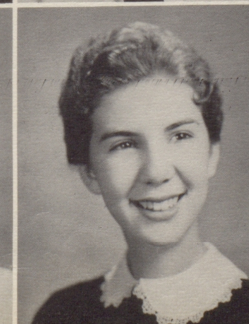
**RENEE HEWITT**  
Beta Club 3, 4; Treasurer 3; Music Club 3; Pep Club 1, 2, 3; History Club 3; Dramatics Club 3; FHA 1, 2, 3, 4; Song-leader 4; Accordion 2; Glee Club 1, 2, 3; Office Assistant 3; FTA Vice President 3.



**JERRY HORN**  
Junior Firemen 1, 2, 3, 4; Letterman's Club 1, 2, 3, 4; Class Vice President 1; Bomber News Staff 3; Quill and Scroll 3; Annual Staff 3, 4; Junior Play 3; Baseball 2, 3, 4; Football 2, 3, 4; Football Manager 1; Basketball 1, 2, 3, 4; All-County 2.

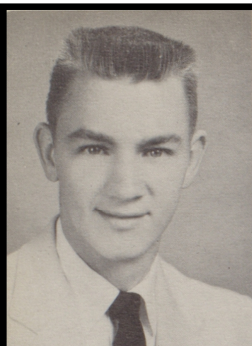


**BOB HURST**  
Junior Firemen 3, 4; Letterman's Club 2, 3, 4; Bomber News Staff 3; Annual Staff 3; Baseball 2, 3, 4; Football 3, 4; Football Manager 2; Theater Club 3.



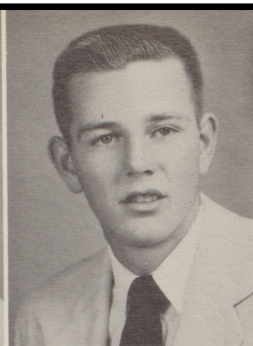
**IDA MAY KING**  
FBLA 4; Music Club Secretary 3, 4; Pep Club Reporter 2, 3; Dramatics 2; Student Council Treasurer 4; Class Treasurer 3, 4; FHA 1, 2; Treasurer 2; Bomber News Staff 3; Glee Club 1, 2, 4; Office Assistant 3; Band 1, 2, 3, 4; Baxter County Maid 4.





EDDIE LOFTON

Junior Firemen 1, 2, 3, 4; President 3, 4; Letterman's Club President 3, 4; Student Council Representative 2; Class President 3, 4; Junior Play 3; FFA 1, 2; Baseball 3, 4; Band 1, 2, 3, 4; Football 2, 3, 4; All-District 3, 4; Basketball 1, 2, 3, 4; All-District 1; All-County 1, 3; Captain 1; Athletic Award 3; Outstanding Student 3.



MARVIN MARTIN

Letterman's Club 3, 4; Vice President 4; FFA 1, 2, 3, 4; Bomber News Staff 4; Baseball 4; Football 2, 3, 4; All-District 4; Basketball 1, 2, 3, 4.



BLAKE MCGUIRE

History Club 3; Junior Firemen 1, 2, 3, 4; Dramatics Club 3, 4; Student Council Representative 1; FFA 1, 2; Bomber News Staff 4; Baseball 2, 4.



JANE MESSICK

Pep Club 1, 2, 3; History Club 3; Dramatics Club 2, 3; FHA 1, 2, 3, 4; Photographer 2; District Historian 2; President 3; Secretary 4; Bomber News Staff 4; Voice 2; 2 Junior Plays 3; Glee Club 1, 2, 4; Office Assistant 3; Librarian 2, 3; Home Economics Award 2; Student Health Council 4; Driver Training Classes 3.



DAISY MORRIS

Beta Club 3, 4; President 4; Pep Club 1, 2, 3; Student Council Representative 4; FHA 1, 2; Class Secretary 3; Bomber News Staff 4; Annual Staff 3, 4; Piano 1, 2, 3; Junior Play 3; Glee Club 1, 2, 3; Office Assistant 4; Girl's State 3; NFSM 1; Batesville District Music Contest 3; Music Award 3; History Award 3; Dramatics Club 1; FBLA 4.



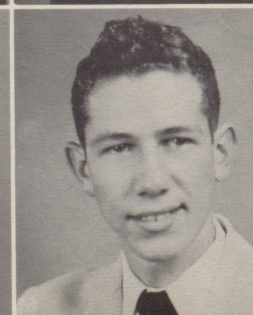
LOIS OELS

Music Club 3; Pep Club 1, 2, 3; History Club 3, 4; Dramatics Club 3, 4; Secretary 4; Piano 1; Property Manager Junior Play 3; Glee Club 1, 2; Office Assistant 4; Librarian 3; Travel Club Secretary-Reporter 3; Library Club 3; Commercial Club 3.



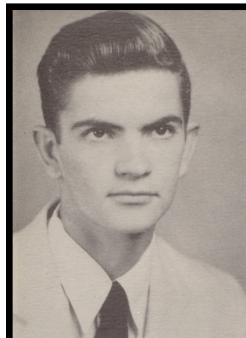
WILLA MAE PERRY

Pep Club 1, 2, 3; History Club Secretary 3, 4; Dramatics Club 3, 4; FHA 1, 2; Bomber News Staff 3; Glee Club 2, 3;



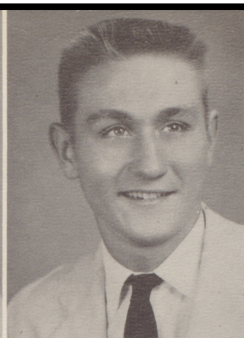
BUDDY POYNTER

Music Club 3; History Club 3; Junior Firemen 4; FFA 1, 3; Chemistry Club 3.



WILLIAM RAINS

History Club 4; Letterman's Club 4; Bomber News Staff 3; Librarian 3; Football 3, 4; Basketball 3, 4.



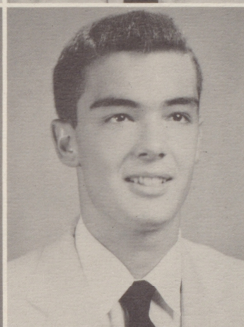
CHUCK RUSGIS

Junior Firemen Vice President 4; Letterman's Club 3, 4; FFA 1, 2; Football 2, 3, 4; All-District 4; All-State 4.



GERRY RUSSELL

Pep Club 1, 2, 3; History Club 3; Dramatics Club 2, 3; Student Council Representative 2; Student Secretary 3; FHA 1, 2, 3, 4; Assistant Historian 2; Historian 3; Office Assistant 2, 3; Basketball 3, 4; Homecoming Maid 1; FFA Secretary 4.



PETER STOVALL

Music Club 3; History Club 2; Junior Firemen 3, 4; Vice President 4; Letterman's Club 1, 2, 3, 4; Student Council Representative 1, 3; Class President 1; Bomber News Staff 4; Glee Club 3; Band 3; Football 1, 2, 3, 4; President 4-H Club 1; Vice President Art Club 3.



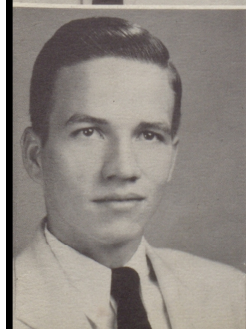
BOB TALBURT

Junior Firemen 3, 4; Letterman's Club 2, 3, 4; Dramatics Club 3; Student Council Representative 4; FFA 1, 2; Bomber News Staff 3, 4; Junior Play 3; Band 1, 2, 3, 4; Football 2, 3, 4; All-District 4; Basketball 1, 3; Halloween King 3; Journalism Award Sports Writing 3; Annual King 4.



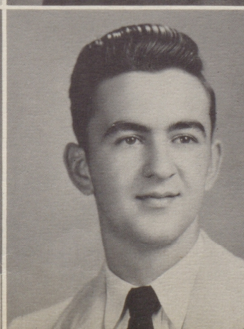
MARY TAYLOR

Music Club 3, 4; Pep Club 1, 2, 3; History Club 3, 4; Dramatics Club 3, 4; FHA 1; Bomber News Staff 4; Sextet 3, 4; Glee Club 1, 2, 3, 4; Cheerleader 1, 2, 3; Homecoming Maid 3; Letterman's Club 3, 4.



WILLIAM THORNE

Letterman's Club 4; FFA 3, 4; Bomber News Staff 4; Baseball 4; Glee Club 2; Football 3, 4.



CARL TREAT

History Club 3; Dramatics Club 3; FFA 2, 3.



