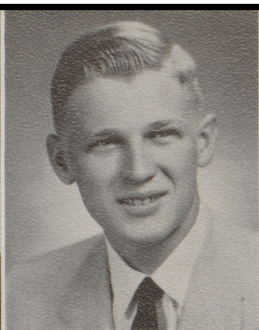




JEANNIE ALLEY  
Band 1, 2, 3, 4; Orchestra 2, 3; Junior Play 3; Dramatics Club 2, 3, 4; Pep Club 1; FBLA 4; Glee Club 1, 3, 4; FBLA State "Miss Secretary".



JERRY BAKER  
Class President 4; Student Council Vice President 3; Football 1, 2, 3, 4; Baseball 1, 2, 3, 4; Letterman's Club 2, 3, 4; Junior Firemen 2, 3; Band 1, 2, 3; Basketball 1, 2, 3; Operetta 3; Bomber News Staff 4.



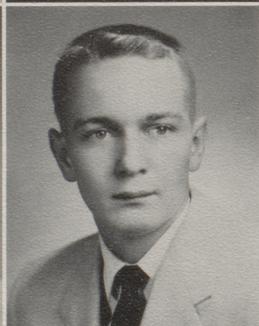
DAVID BENEDICT  
Football Manager 2, 4; FFA 2, 3, 4; Dramatics Club 3, 4; Student Council 2, 4, Secretary 4.



MARILYN W. BENEDICT  
Swimming 1; Life Guard 1; FHA 2; Glee Club 3; Nurses Club President 2; Student Health Council 3, 4; Dramatics Club 2, 3, 4; Band 2, 3, 4; Majorette 2, 3, 4; Operetta 3; Teenage Road-e-o 3.



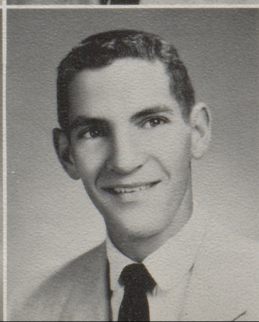
JIM BIRKHEAD  
Football Manager 4; Junior Firemen 4; Letterman's Club 4.



KENNETH BLAKE  
Sports Club 2; Chemistry Club 1; History Club 2, 3, 4; Baseball 2, 4; Theater Club 1.



JO ANNE BOETTGER  
Pep 1, 2; Service Club 1, 2; Dramatics Club 1, 2, 3; Office Assistant 1, 2, 4; Beta Club 4; Student Council Representative 4; Editor of Bomber News 4; A Cappella Choir 1, 2; State Vice President AHSPA.



ED BRADLEY  
Football 1, 3, 4; Basketball 1; Baseball 3; Band 1, 2, 3; Drum Major 2; Orchestra 2; Junior Firemen 1, 2, 3; Letterman's Club 2, 3, 4; Junior Play 3; Boys' Glee Club 1, 2.

FRANCES BRYNIARSKI  
Pep Club 1; Travel Club 2; Music Club 3; History Club 3; Beta Club 4; Girl's State 3.

EMOGENE BYRD  
FHA 1, 2, 3, 4; Secretary 4; State Delegate 3; Junior Play 3; FBLA 4; Glee Club 2; Basketball 3; 4-H 3, 4; Pep Club 1, 2, 3, 4; Record Club 3; Secretary 3; Office Assistant 1, 2, 3, 4; NFSM 1; Piano 1;

CAROL CARR  
Dramatics Club 1, 2, 3, 4; FBLA 4; Pep Club 1, 2, 3; Sextet 2, 3; Glee Club 2, 3; Chorus 1, 4; Beta Club 4; Cheerleader 1, 2, 3, 4; Captain 4; Junior Play 3; Office Assistant 1, 4.

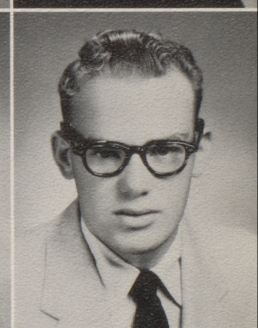
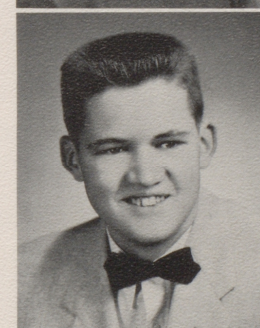
JOY CASTSTEEL  
Pep Club 1; FHA 2; Glee Club 2; History Club 3; FBLA 3, 4; Vice-President 4; Office Assistant 4.

RAY BOB COX  
Chemistry Club 2; Sports Club 2; History Club 3, 4.

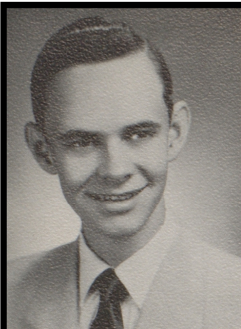
JERRY CURRY  
Football 2, 3, 4; Baseball Scorekeeper 3, 4; Letterman's Club 2, 3, 4; Beta Club 2, 3; Annual Staff 4; Bomber News Staff 4; Operetta 3; Junior Play 3; Dramatics Club 2, 3, 4.

MILTON DAHLKE  
Football 1, 2, 3, 4; Basketball 1, 2, 3, 4; Baseball 2, 3, 4; FFA 1, 2, 3, 4; Secretary 2, Reporter 3, Student Advisor 4; Letterman's Club 2, 3, 4; Class Vice President 3.

PATTY DAHLKE  
Junior Play 3; FHA 1, 2, 3, 4; 3rd Vice President 3; Glee Club 1, 2; Pep Club 1, 2; FBLA 4; Record Club 3; Office Assistant 3, 4.







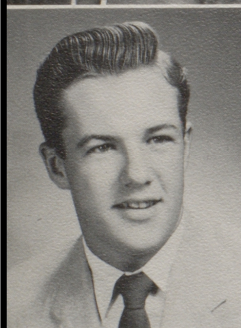
**DICK DAHLEN**  
Basketball 1; Baseball 3, 4; History Club 2; English Award 2; Junior Play 3; Beta Club 2, 3, 4; Vice President 2; Letterman's Club 2; Annual 3, 4; District Health Council 3; Student Council Representative 4; President 3.

**MARY DENNY**  
FHA 1, 3; Pep Club 1, 2; Music Club 2; History Club 4; FBLA 4.



**MARY DEAN DUGGINS**  
FHA 1, 2, 3; Pep Club 1, 2; FBLA 3, 4; Photographer 4; Music Club 2.

**SHERA EDWARDS**  
Cheerleader 1, 4; Pep Club 1, 2; Y-Teens 1; Student Council 1; Proctor 2; Glee Club 3; FHA 3; Student Health Council 3, 4; Coordinator 4.



**SONNY EKDAHL**  
Football 1, 2, 3, 4; All-District 4; All-State 4; Baseball 1, 2, 3, 4; Basketball 1, 2; Manager 4; Junior Firemen 2, 3; Junior Play 3; Band 1, 2, 3; Letterman's Club 1, 2, 3, 4; Operetta 3; Orchestra 3.

**ROSETTA ELLIS**  
Glee Club 2, 3; FHA 1; Pep Club 2, 3; Basketball 2, 3.



**MAYME ROSE GARNER**  
Student Health Council 3, 4; District Health Council 3; Homecoming Maid 2, 3, 4; Annual Staff 4; Bomber News Staff 4; Glee Club 1, 2, 3; Mixed Chorus 3; Pep Club 1, 2, 3; Operetta 3; Band 1; FHA 2, 3; Secretary 2; Agriculture Secretary 4; Dramatics Club Vice President 3, 4; 4-H 1, 2, 3, 4; National Delegate 2.

**FRANCES GOETZ**  
Student Council Representative 1, Vice President 4; FHA 1, 2; Pep Club 1, 2; Glee Club 1; Homecoming Maid 3; Beta Club 3, 4; Vice President 3; Bomber News Staff 4; Student Health Council 3, 4; Music Club 2.

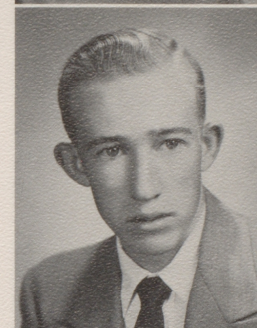
**NANCY LEE GREENWOOD**  
Class Secretary-Treasurer 1; Glee Club 1, 2, 3; Dramatics Club 4; Red Cross Representative 1; Annual Staff 4; Swimming Club 2; Archery Club 2; Office Assistant 2, 4; FBLA 4; Operetta 3.

**ELLEN HARMON**  
Bowling Club 1; Thilia Club 2, 3; French Club Treasurer 2, 3; History Club 4; Beta Club 4.



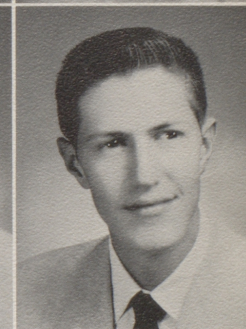
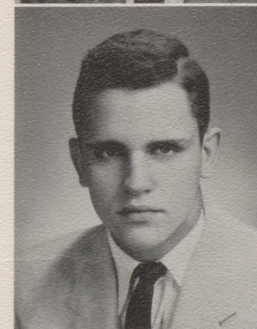
**DWAIN HAWKINS**  
Baseball 2, 3, 4; Basketball 4; FFA 1, 2, 3, 4; President 2, 3, 4.

**SANDY HAWKSLEY**  
Class President 1; Class Treasurer 4; FHA Reporter 2; Homecoming Maid 2; Baxter County Royalty 3, 4; Campus Maid 4; Cheerleader 3; Student Health Council Secretary 4; Dramatics Club 3, 4.



**JOHN P. HEENAN**  
Basketball 1, 2, 3, 4; Football 2, 3, 4; Junior Firemen 2, 3; All-District Football 4; Letterman's Club 1, 2, 3, 4; Bomber News Staff 4; Sports Club 4.

**ROY JENNINGS**  
Football 3, 4; Basketball 1, 2, 3, 4; Band 1; Junior Firemen 3, 4; FFA 1; Letterman's Club 1, 2, 3, 4; Boys' Glee Club 1, 2; Bomber News Staff 4.



**DELORIS KASINGER**  
Classical Music Club 2; Pep Club 1; FHA 3; History Club 4.

**GARY KEETER**  
Football 1, 2, 3, 4; All-District 4; Letterman's Club 1, 2, 3, 4; Junior Firemen 1, 2, 3, 4; Operetta 3; Boys' Glee Club 1, 2; Band 1, 2, 3, 4; Orchestra 2, 3, 4; Baseball 1, 2, 3, 4; Basketball 1; Dramatics Club 1.





LATHELLE KENNEDY  
FHA 1; Pep Club 1; Latin Club 2, 3; FBLA 4; Dramatics Club 4; Annual Staff 4.

BESSIE KNIGHT  
Glee Club 1, 2, 3; Music Club 3; Nurses Club 2; Secretary 2; Pep Club 1, 2; History Club.



JESSIE KNIGHT  
Glee Club 1, 2, 3; History Club Secretary 4; Music Club 2, 3; Nurses Club 2; Pep Club 1, 2.

NORMAN KOELLER  
Movie Club 1; Camera Club 2; History Club 1, 2; Classical Music Club 2; Dramatics Club 3, 4; Music Club 3; Student Health Council 4; Beta Club 3.



CARROLL KYTLE  
Basketball 4; Baseball 4; FBLA 4; History Club 1, 2, 3; Dramatics Club 4; Sports Club 2; Theatre Club 1; Music Club 3; Chemistry Club 1.

CARLA LANCE  
Pep Club 1, 2, 3; Glee Club 2, 3; Theatre Club 2; Classical Music Club 2; FBLA 3, 4; President 4; Music Club 3; Operetta 3; Office Assistant 4.



WILMA LANE  
Cheerleader 1; FHA 1, 2; Historian 2; Songleader 1; Dramatics Club 3, 4; Glee Club 3; Music Club 3.

MARY LAYFIELD  
FHA 1, 2; Mixed Chorus 3; Pep Club 2; Glee Club 2; Record Club 3; FBLA 4; Student Health Council 3; Dramatics Club 4.

BILLY MARLER  
FFA 1, 2, 3, 4; Baseball 2, 3.

PHYLLIS MATTHEWS  
FHA 1, 2; Treasurer 2; Student Health Council 3, 4; Secretary 3; Head of Healthful School Living 4; Class Officer 3; Beta Club 3, 4; Treasurer 3; President 4; Dramatics Club 3; Girl's State 3; Rainbow 2, 3, 4; Bomber News Staff 4.

MARGARET McGUIRE  
FHA 1, 2, 4; Assistant Historian 2; 1st Vice President 4; Glee Club 1, 3; Intramural Basketball 2, 3.

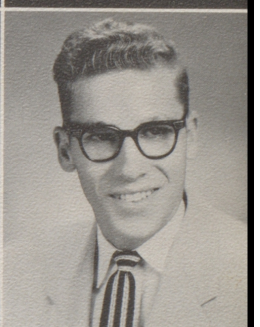
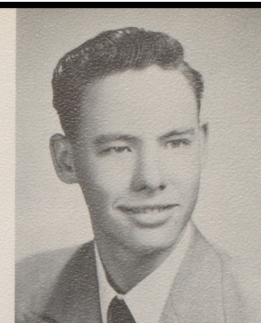
CARYLON MITCHELL  
FHA 1, 2, 3, 4; Songleader 3, 4; Glee Club 1, 2, 3, 4; FBLA 4; Office Assistant 4.

CONNIE MORRIS  
Band 1, 2, 3, 4; Majorette 1, 2; Drum Major-ette 3, 4; FBLA 3, 4; Dramatics Club 2, 3, 4; Secretary 2; Vice President 4; Annual Staff 3; FHA 1; Junior Play 3; Baxter County Maid 1; Homecoming Maid 4; Miss Drumsticks 4.

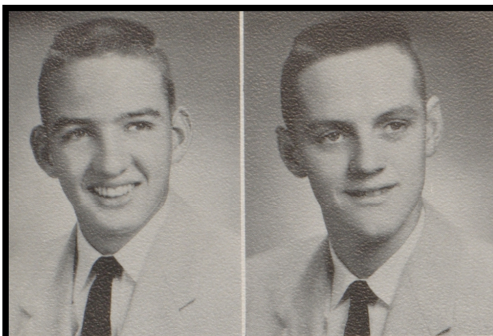
MICKEY NEARN  
Football 2, 3, 4; Class Officer 2; Dramatics Club 2, 3; Basketball 1; Letterman's Club 1, 2, 3, 4; Junior Firemen 2, 3; Fire Marshall 3; Boys' Glee Club 1, 2; Junior Play 3; Operetta 3.

NINA LAVENA JANE PARKS  
Hi-y 1; Pep Club 1, 2; Foreign Pen Pals 1; Junior Play 3; Beta Club 3, 4; Librarian 2, 3, 4; Librarian's Club 2, 3, 4; FBLA 3, 4; Treasurer 4; Office Assistant 4; Typing Pen 3.

BETTIE PATE  
Student Council Representative 3; Basketball 2, 3; Pep Club 1, 2; Sextet 3.





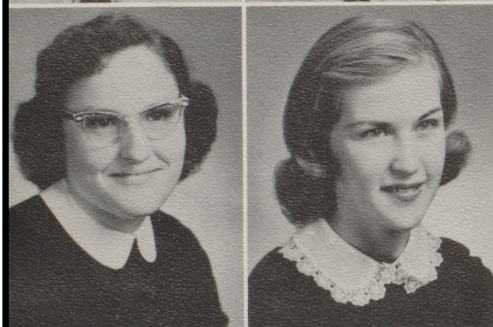


JIMMY PETERS

Football 1, 2, 3, 4; All-District 4; Baseball 2, 3, 4; Letterman's Club 1, 2, 3, 4; Basketball 1; Scorekeeper 4; Timekeeper 3; Junior Firemen 2, 3, 4; Assistant Fire Chief 4.

PAUL PROVENCE

Football 4; Manager 2, 3; Junior Play 3; Basketball 2, 3; Baseball 2, 3, 4; Junior Firemen 2, 3, 4; Letterman's Club 2, 3, 4.

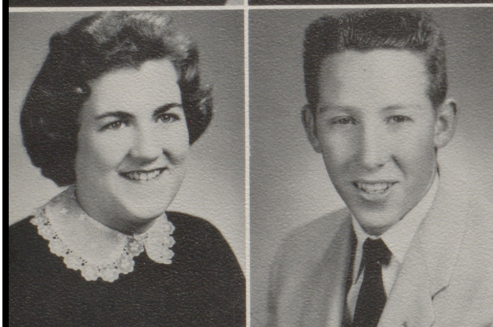


NORMA QUICK

FHA 1, 2, 3, 4; Assistant Historian 4; Glee Club 2, 3; Pep Club 1; Dramatics Club 3.

SHIRLEY REA

Nurses Club 1; Pep Club 2; Music Appreciation Club 3; Career Club 3; Classical Music Club 2.



JOYCE REEVES

FBLA 3, 4; Glee Club 2, 3; FHA 1, 2; Pep Club 2, 3.

CLIFFORD SHARP

Football 1, 2, 3, 4; All-District 4; Baseball 1, 2, 3, 4; Basketball 2, 3, 4; Junior Firemen 2, 4; Fire Chief 4; Letterman's Club 2, 3, 4; President 4; History Club President 3; Student Council 1; Class Vice President 4; Band 1.

MARY LOU SHERMAN

FBLA 4; Photographer 4; Science Club 2; Teacher Assistant 4; FHA 1; History Club 3, 4.

LaNELL SIMPSON

Office Assistant 2; Glee Club 1, 2; Pep Club 1, 2; Dramatics Club 2; Library Club 3; Band 2, 3, 4; Music Club 3.



BUSSY SNOW

Junior Play 3; Student Council Representative 1, 3; Junior Firemen 1, 2, 3, 4; Band 1, 2, 3; Orchestra 2, 3, 4; Football 2, 3, 4; Basketball 2; Boys' Glee Club 1; Letterman's Club 4.

ROBERTA SHARP STODDARD

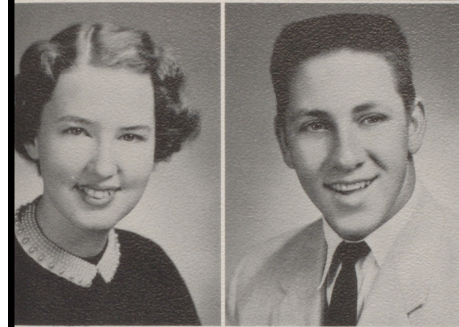
FHA 1, 2, 3, 4; Vice President 1; President 2, 3, 4; Federation 3rd Vice President 3; National Delegate 3; 4-H 1, 2, 3, 4; National Delegate 3; County Champion Girl 3; Pep Club 1, 2; Glee Club 1; Dramatics Club 1, 2; FTA 1, 2; Record Club 3; Hot-Rod Club 4.

MARY LOU STUDDARD

Class President 3; Class Secretary 4; FHA 1, 2; Glee Club 1, 2, 3; Pep Club 1, 2; Music 3; Junior Play 3; Record Club Reporter 3; Annual Staff 3, 4; Editor 4; Beta Club 2, 3, 4; President 2; Secretary 4; Class Secretary-Treasurer 1; Operetta 3; Student Health Council 3; Typing Pens 3, 4; Girl's State 3; Music Club 2; FBLA 3; Rainbow 2, 3, 4; MYF President 3.

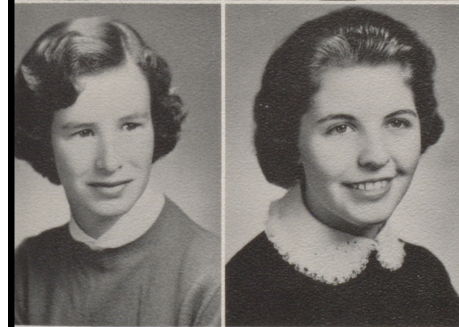
TOMMY STUDDARD

Football 2, 3, 4; All-District 4; All-State Honorable Mention 4; Sports Club 4; Baseball 1, 2, 3, 4; All-State 3; Letterman's Club 1, 2, 3, 4; Junior Firemen 2, 3; Bomber News Staff 4.



SHIRLEY STUDDARD

Pep Club 1; Glee Club 2; History Club 3, 4; Music Club 3; Travel Club 2.

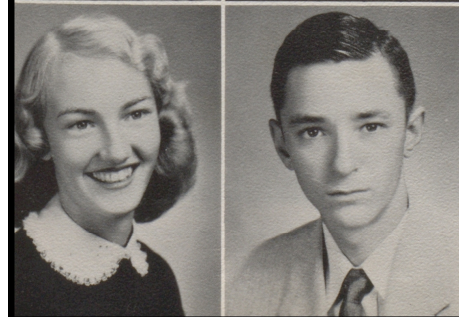


PATRICIA LOUISE SUMMERS

FHA 1, 2; Band 1; Glee Club 1, 2, 3, 4; Tripple Trio 1; Sextet 2, 3; FHA Songleader 2; Class Reporter 1; Dramatics Club 1, 2, 3, 4; History Club 1, 2; Operetta 3; Cheerleader 1; Pep Club 1; 4-H 1; United Youth President 4.

DELEMA VAWTER

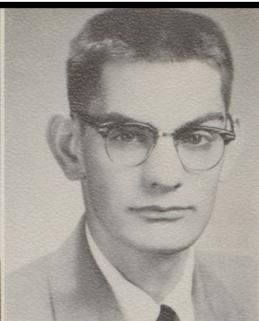
History Club 4; Pep Club 1, 2; Music Club 2, 3; FHA 1; Glee Club 1; Nurses Club 2; Intramural Basketball 2.



DONALD WALKER

FFA 1, 2, 3, 4; History Club 2.



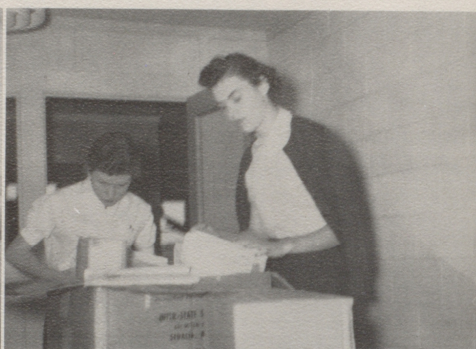


MARILYN WAUGH  
Speech Club 2, 3; Y-Teens 1, 2, 3; Senior  
Play Crew 3; Dramatics Club 4.

DON WISE  
Dramatics 4; Basketball 4.



Senior class prexy--Jerry Baker  
spurring us on to New York.



The Christmas cards arrive!--  
A few more miles assured.



A senior highlight--rings arrive!



Another highlight--senior pictures.