

CLASS OF 1950



ROBERT LEE HACKLER
President

Manager of athletics 2, 3, 4; junior play; Hallowe'en king 4; business manager of annual 3, 4; Boys' State 3; glee club 1; operetta 2; orchestra 1.



CLYDE HOWARD
Vice-President

Basketball 1, 2, 3, 4; football 2, 3, 4; softball 1; track 2; paper staff 3, 4; best personality 3; all-district basketball 1, 2; honorable mention district football 4.

WILMA THOMAS
Secretary

Editor school paper 4; pep squad 3, 4; Home Economics club 1, 2, 3, 4; treasurer of Home Economics club 2; glee club 1, 2, 3; junior play; class secretary 1; operetta 1, 2; librarian 4; Girls' State 3.



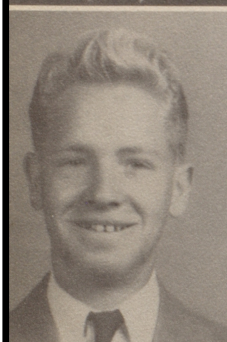
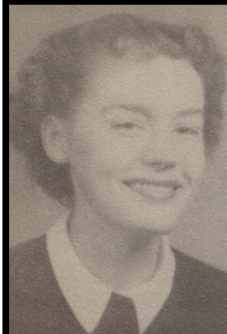
CLASS OF 1950

EVELYNN BAER

Hallowe'en queen 4; Orchestra 1; Girls' State 3; Laurels 1; Office Girls' club 1; Pan-American League 1; pep squad 3, 4; Girls' Athletic Ass'n. 3, 4.

FLORENCE TALBERT BAKER

Home Economics Club 1, 2, 3.



BILL BOWMAN

REGENIA LEA BROWN

Basketball 1; Home Economics club 1, 2; pep squad 4.

PATRICIA BRUCE

Basketball 1, 2, 3, 4; annual staff 3; football maid 4; Home Economics club 1, 2, 3; V. P. Home Economics club 1, 2, 3; glee club 1, 2, 3; voice 1; operetta 1, 2; pep squad 3, 4.

JANETTE BYRNIARSKI

Glee club 1; music 1, 2.



BETTIE BYRD

F.H.A. 2, 3; junior play; class queen 3; band 4.

MILDRED JOHNSON CHAPELLE

Annual asst. business manager 3; V. P. F. H. A. 1; F. H. A. 1, 2, 3; glee club 2, 3; operetta 2.

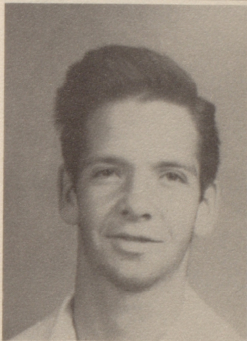
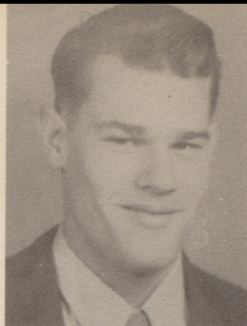


CLASS OF 1950

ROBERT CLAYTON

WILLIAM CULBERSON

Band 1, 2; football 2, 4; track 2.

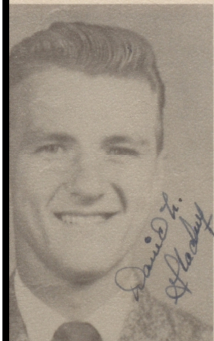


ROBERT EAKINS

Football 1, 2, 3, 4.

ANNIS LEE FOUTS

Home Economics club 1, 2, 3.



DAVID LEE GLADNEY

Football 1, 2, 3; junior play; basketball 2;
craft club 1; operetta 2.

ERCEIL HAUGHN

Pep squad 3, 4.



ANN HAWKINS

Junior play; softball 2; glee club 1, 2;
operetta 2; librarian 3, 4; pep club 3, 4.

LARUE HAWKINS

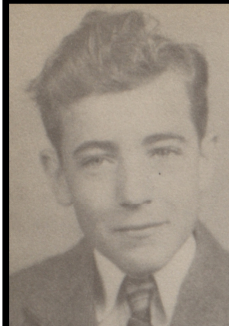
Junior play; Home Economics club 1, 2, 3;
pep squad 3; librarian 2.

CLASS OF 1950

T. J. HENDERSON

ANN HERBOECK

F.H.A. 1, 2, 3; historian 2, 3; basketball
1; pep squad 4; glee club 3; librarian 4.



BOBBIE JO HIGHTOWER

Glee Club 1; pep squad 3, 4.

JOHN HILLIS

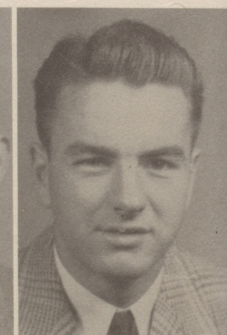
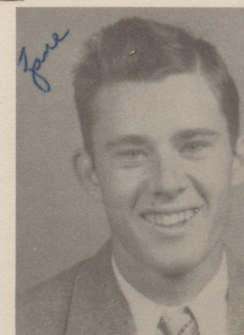
Basketball 1, 2; baseball 1; freshman play.

ZANE HOPPER

Football 2, 3, 4; track 2.

CLARK HOWARD

Football 2, 3, 4; basketball 1, 2, 3, 4; most
versatile 3; most popular 3; track 2; soft-
ball 1; glee club 1; annual sports editor 4;
captain and all-district football 3, 4.



BETTY JO HUETT

Glee club 1; pep squad 3, 4.

HELEN HUETT

Glee club 3; pep squad 4.



CLASS OF 1950

BOB JENNINGS

Basketball 1, 2, 3, 4; football 2, 3, 4; softball 1, 2; track 2; football captain 4; all-district football 3, 4; junior play; cutest boy 3; best physique 3; Hallowe'en king 1.

WAVA JENNINGS

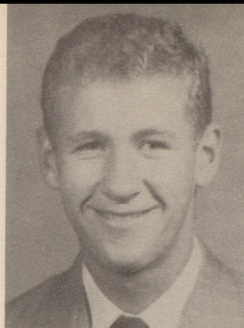
Librarian 4; pep squad 4; junior play.

BETTY LAYFIELD

F.H.A. 1, 2, 3; glee club 3; business manager of school paper 4.

BEN LOVE

Basketball 1; football 3, 4; junior play.



JOE ALLEN MANES

HELEN MCGUIRE

F.H.A. club 1, 2, 3.



VIVA LOU MEDLEY

Basketball 1, 3; pep squad 4.

MARY ANN MESSICK

Librarian 3, 4; glee club 3; Girls' State 3.



CLASS OF 1950

CAIRDENIA MINGE

Pep squad 4.

BETTY MURPHY

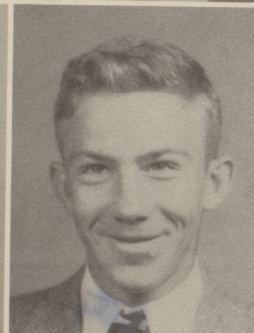
Librarian 4; softball 2; glee club 1, 2; operetta 2; football maid 3; pep squad 3, 4.

WILMA OSBORN

F. H. A. 1, 2.

BILL PACE

Class president 1; class reporter 3; football 3, 4; basketball 1, 3, 4; junior play; boys' glee club 1; softball 1.



DWIGHT PARTEE

NANCY SUE PROTIVA

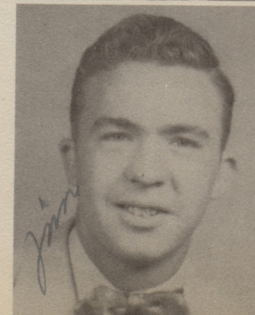
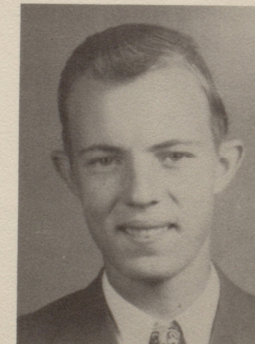
Basketball 1, 2, 3, 4; softball 2; librarian 3, 4; class president 2; class secretary 3; junior play; glee club 1, 2; operetta 2; pep club 3, 4; Girls' State 3; Asst. editor and business manager of school paper 3; annual editor 4.

JIM QUILLAN, JR.

Football 3, 4; Chess Club 1; glee club 1; dramatics 3; swimming 1; R.O.T.C. 3.

BERNARD SCHULZE

Basketball 1; boys' glee club 1.



CLASS OF 1950

BILLY BOB SNOW

Football 2, 3, 4; basketball 1, 3, 4; class vice president 1, 2; class president 3; junior play; operetta 2; track 2; most handsome, best dressed, class king 2; class favorite 2.

HOWARD SOUTHARD

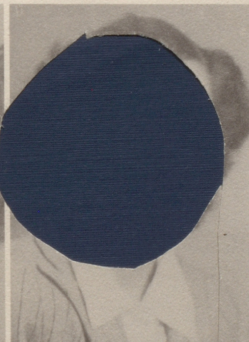
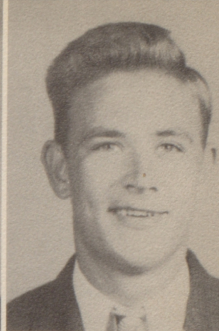
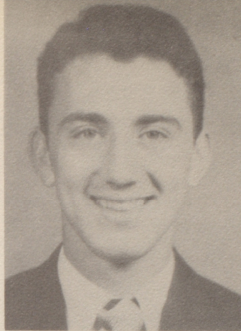
Football 3, 4; basketball 1, 2, 3, 4; track 2; class king 3.

WANDA DOUGLAS SOUTHARD

Pep squad 3; F.H.A. 1, 2, 3; F.H.A. historian 2.

JERRY STEPHENS

Class vice president 1; class secretary 2; football 1, 2, 3; basketball 2, 3, 4; track 2, 3; junior play.

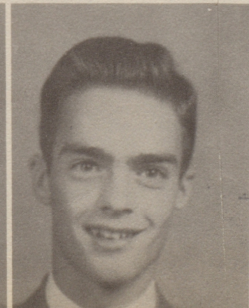
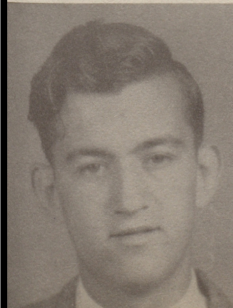


JEAN SUMMERS

Glee club 1; pep squad 3.

FRANCES THORNE

Pep Squad 3, 4.



BILL TREAT

Basketball 1, 2, 3, 4; bus driver 3.

BILL WINN

Football 1, 2, 3, 4; basketball 1, 3; class vice president 3.