

**INSTALLATION INSTRUCTIONS: Can Am
Maverick Front Tube Bumper**

It is recommended that bolts remain "hand tight" until all bolts are installed.

Parts List		
ITEM	QTY	DESCRIPTION
1	1	Winch Plate
2	1	Brush Guard Mounting Brkt
3	1	Right Tube
4	1	Skid Plate
5	1	Top Tube
6	1	Cover Plate
7	1	Left Tube

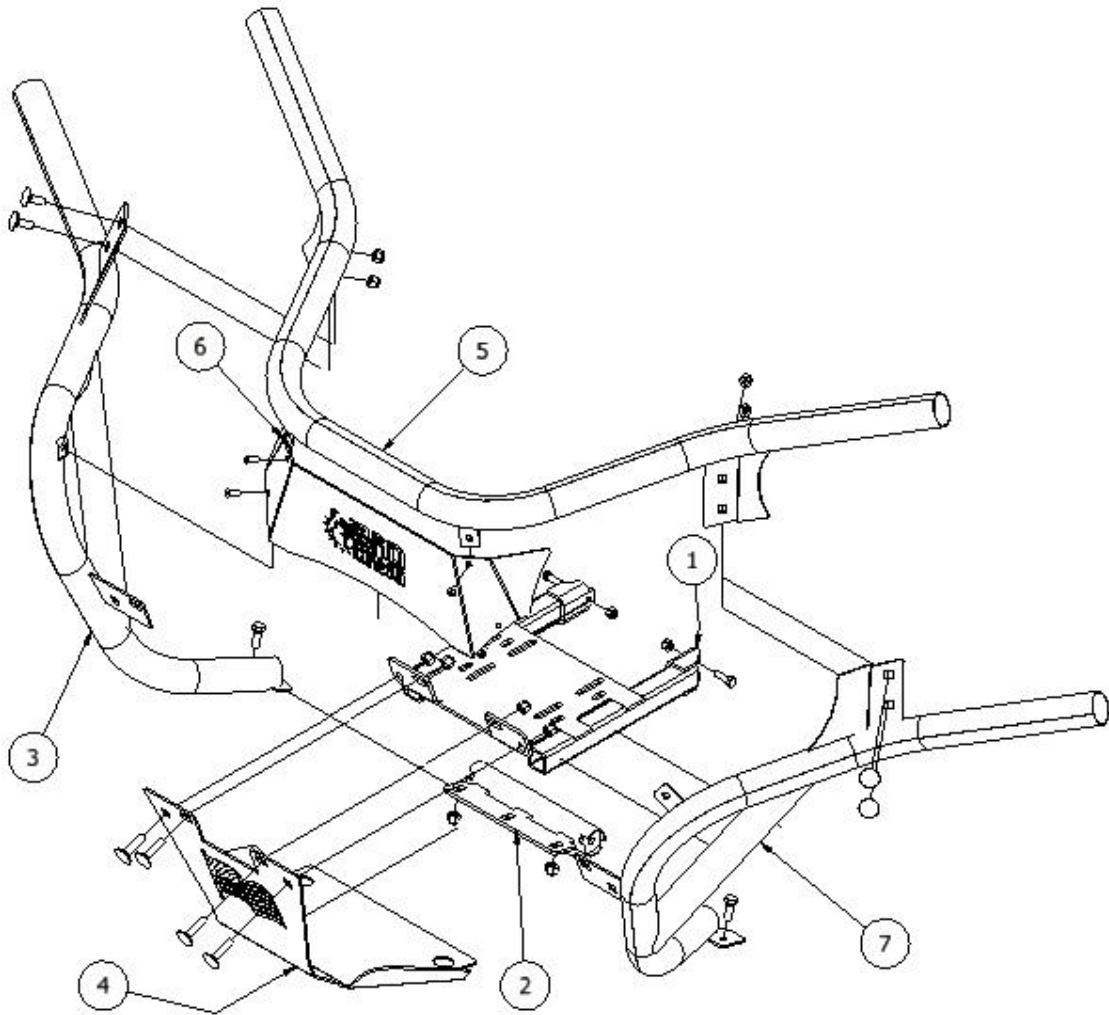


Figure 1.

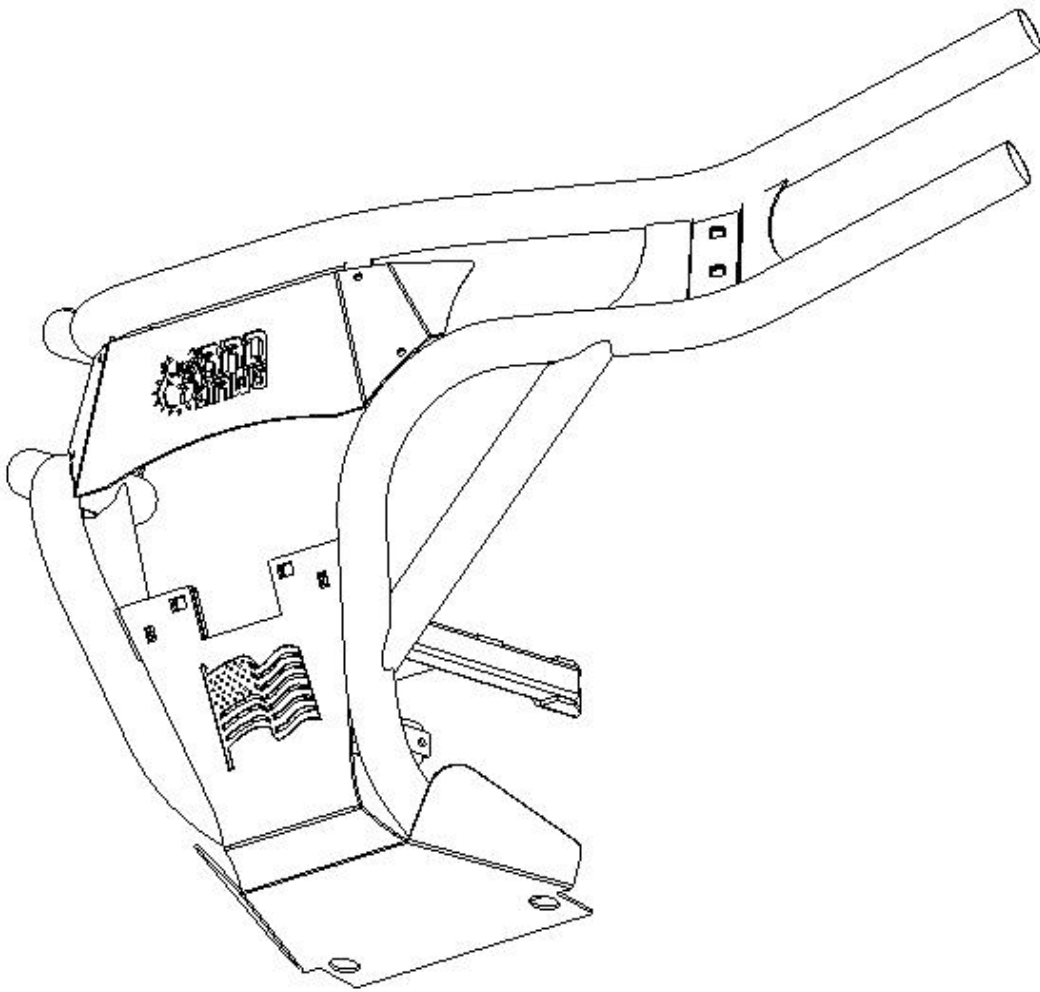


FIGURE 2



**INSTALLATION INSTRUCTIONS: Can Am
Maverick Front Tube Bumper**

HARDWARE LIST:

B1. 3/8 x 1 Carriage Bolt with Flanged Nylock Nut _____ X 10

B2. 1/4-20 Button Head Bolt with Flat Washer _____ X 4

Step 1

Remove factory bumper but **retain all mounting bolts**, you will need them to mount the new bumper. [2- upper side bolts, 1-long bottom bolt, 2 smaller skid plate mounting bolts with concave washer]

STEP 2

Install the bottom bracket (item2) by using the long, factory bottom bolt.

STEP 3

Install the Winch Plate (item1) by using the factory upper side bolts.

STEP 4

Secure the bottom portions of both the Right and Left Tubes (items 3, 7) to the bottom bracket with bolts (B1).

STEP 5

Install the upper portion of the Skid Plate (item 4) along with the upper portion of the Side Tubes and secure them together with bolts (B1) according to the illustration (figure 1.). The Side Tube brackets mount in-between the Skid Plate and the Winch Plate (figure 2.).

STEP 6

Secure the bottom portion of the Skid Plate using the 2 smaller skid plate mounting bolts with concave washers (factory bolts).

STEP 7

Align the mounting holes of the Top Rail (item 5) with the corresponding holes of the Left and Right Tubes (items 3, 7) using bolts (B1), according to the illustration (figure 1).

STEP 8

Install the Cover Plate (item 6) using bolts (B2).

STEP 9

Adjust the bumper and tighten all bolts.

STEP 10

1. Enjoy your new BAD DAWG bumper!