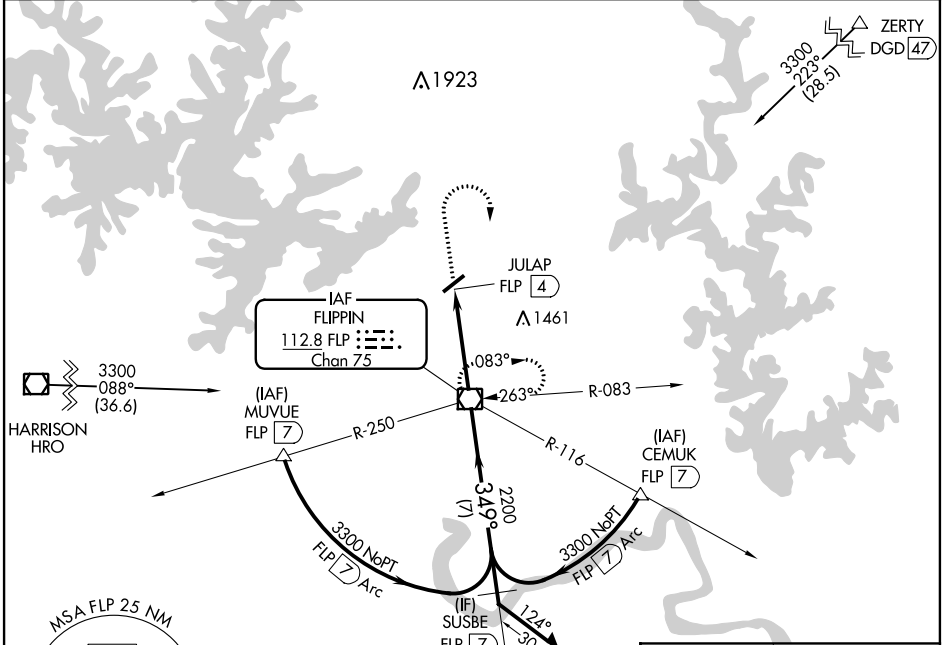


VOR/DME FLP 112.8 Chan 75	APP CRS 349°	Rwy Idg TDZE Apt Elev	N/A N/A 928
--	------------------------	-----------------------------	--

MOUNTAIN HOME/BAXTER COUNTY (BPK)

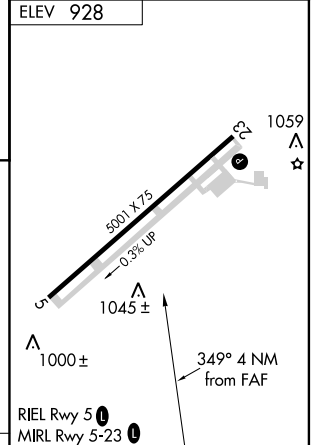
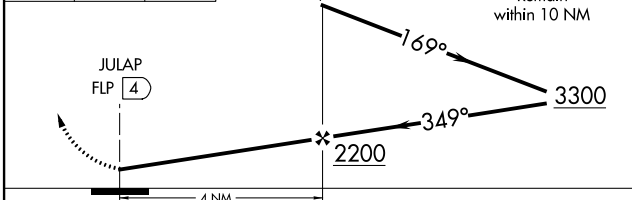
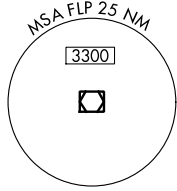
▼ When local altimeter setting not received, use Harrison altimeter setting and increase all MDA 140 feet and Cat C visibility ½ mile.
▲ MISSED APPROACH: Climb to 3000 then right turn direct FLP VOR/DME and hold.

ASOS 133.975	MEMPHIS CENTER 126.85 281.55	UNICOM 123.0 (CTAF) 0
------------------------	--	---------------------------------



SC-1, 12 NOV 2015 to 10 DEC 2015

SC-1, 12 NOV 2015 to 10 DEC 2015



CATEGORY	A	B	C	D	FAF to MAP 4 NM					
CIRCLING	1460-1 532 (600-1)		1460-1½ 532 (600-1½)	NA	Knots	60	90	120	150	180
					Min:Sec	4:00	2:40	2:00	1:36	1:20