

RNAV (GPS) RWY 23

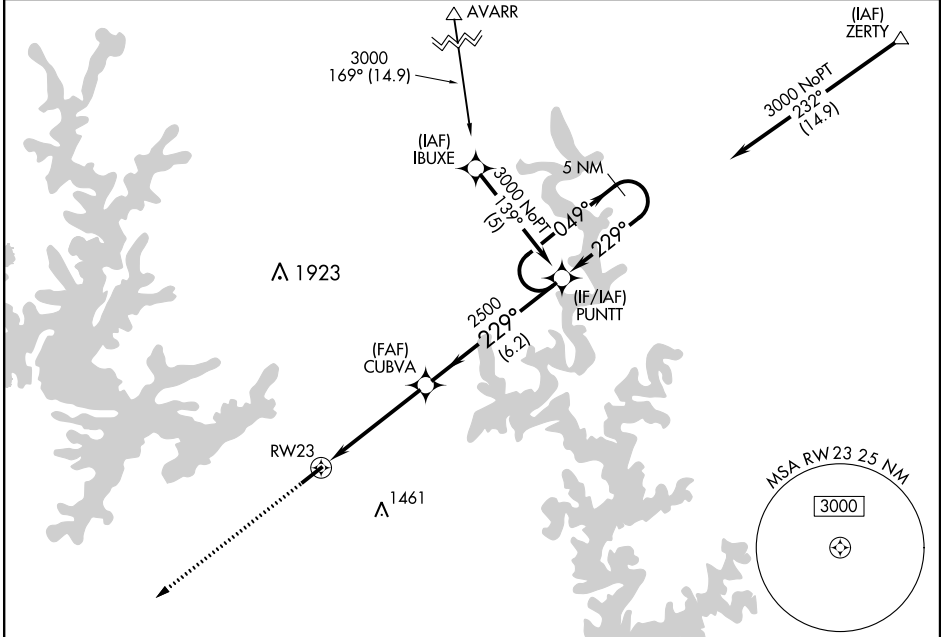
MOUNTAIN HOME/BAXTER COUNTY (BPK)

APP CRS 229°	Rwy Idg 5001
	TDZE 919
	Apt Elev 928

MISSED APPROACH: Climb to 3100 direct COYAB and hold.

DME/DME RNP-0.3 NA. Visibility reduction by helicopters NA. If local altimeter setting not received, use Flippin altimeter setting and increase all MDAs 60 feet.

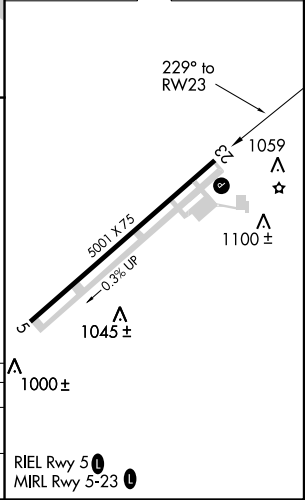
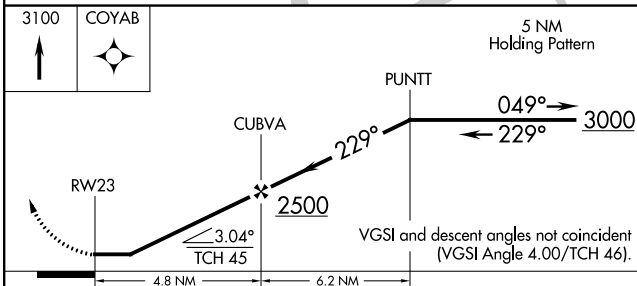
ASOS 133.975	MEMPHIS CENTER 126.85 281.55	UNICOM 123.0 (CTAF) 0
------------------------	--	---------------------------------



SC-1, 12 NOV 2015 to 10 DEC 2015

SC-1, 12 NOV 2015 to 10 DEC 2015

ELEV 928	TDZE 919
----------	----------



CATEGORY	A	B	C	D
RNAV MDA	1360-1	441 (500-1)	1360-1 1/4 441 (500-1 1/4)	NA
CIRCLING	1400-1	472 (500-1)	1400-1 1/2 472 (500-1 1/2)	NA

RIEL Rwy 5 0
MIRL Rwy 5-23 0